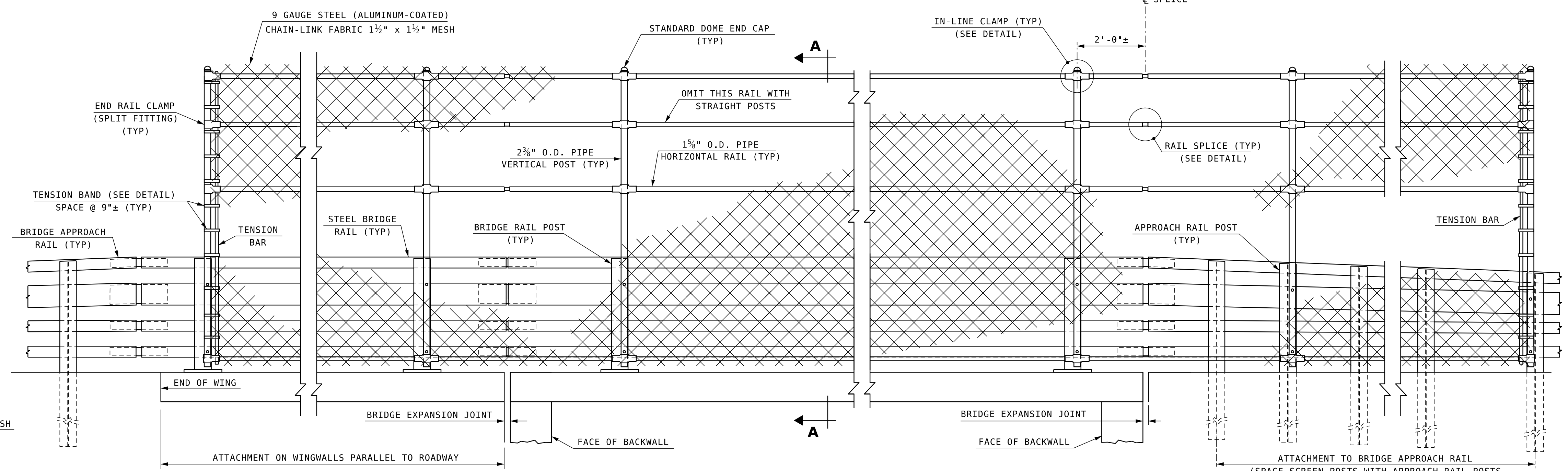


SECTION A-A

SCALE: 1/2" = 1'-0"

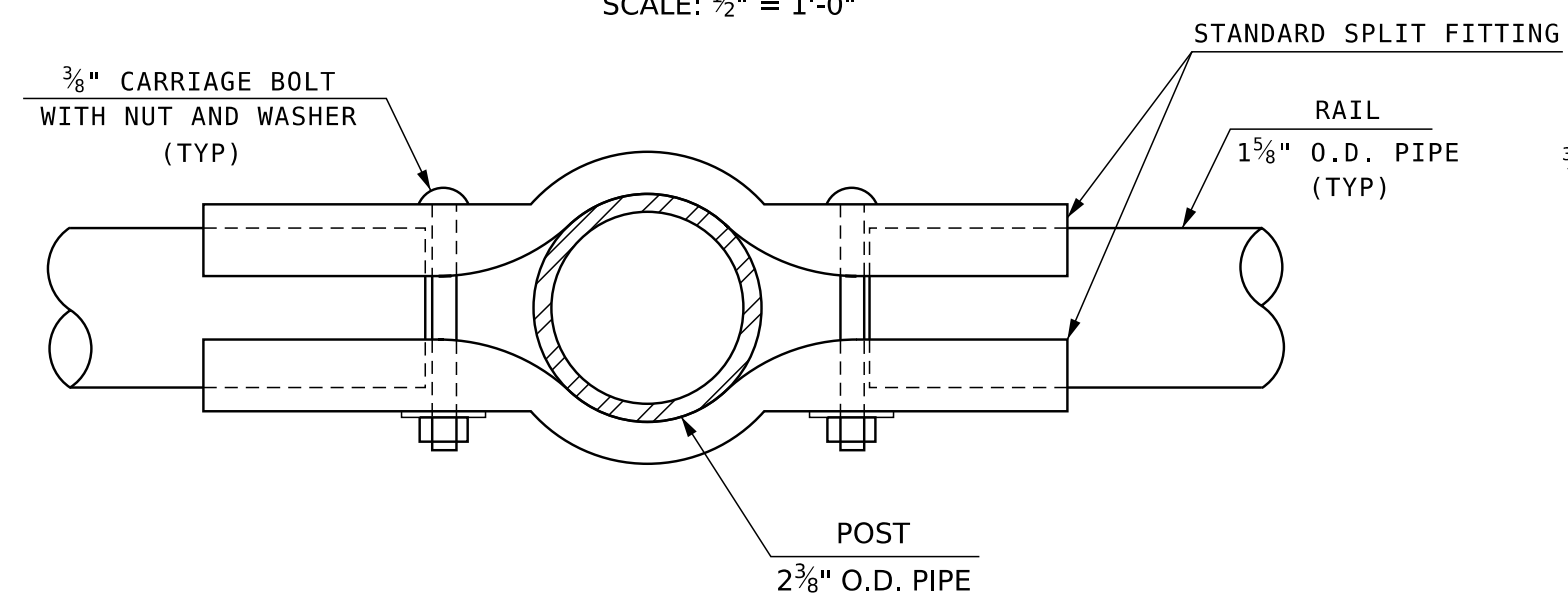
STRAIGHT SCREEN WITH BRUSH CURB

CURVED SCREEN WITH SIDEWALK



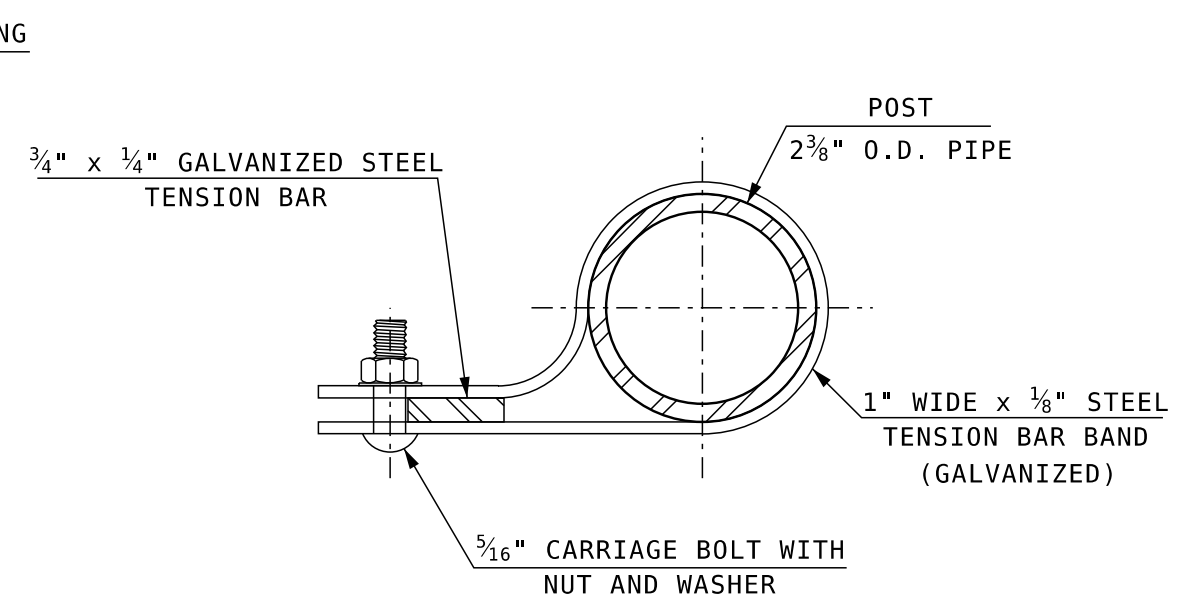
BACK SIDE ELEVATION VIEW

SCALE: 1/2" = 1'-0"



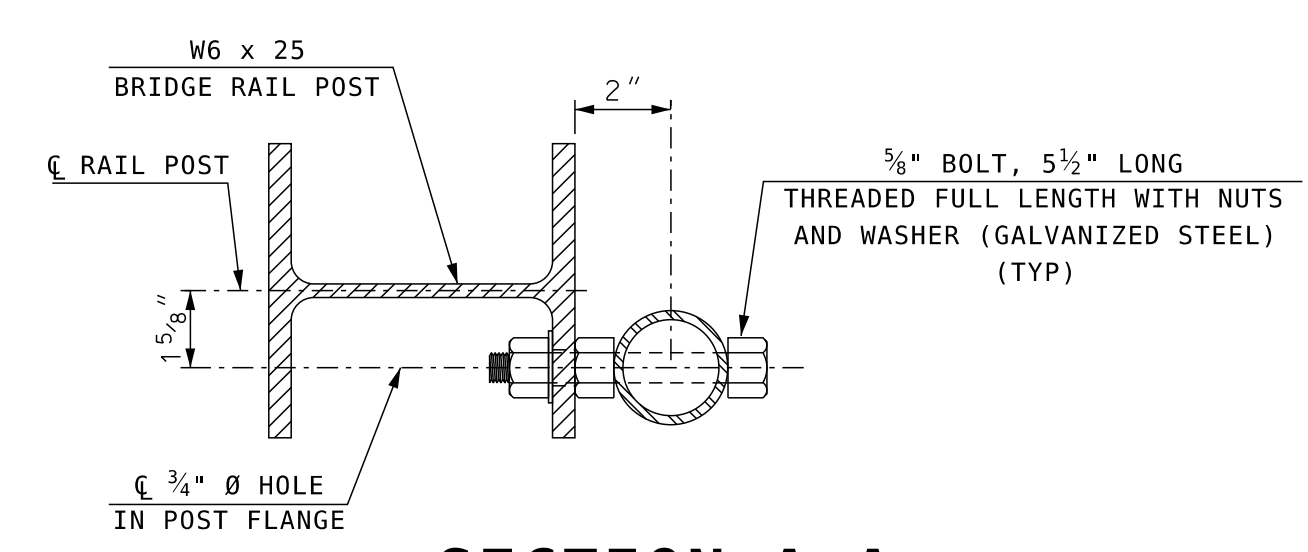
IN-LINE CLAMP DETAIL

SCALE: 6" = 1'-0"



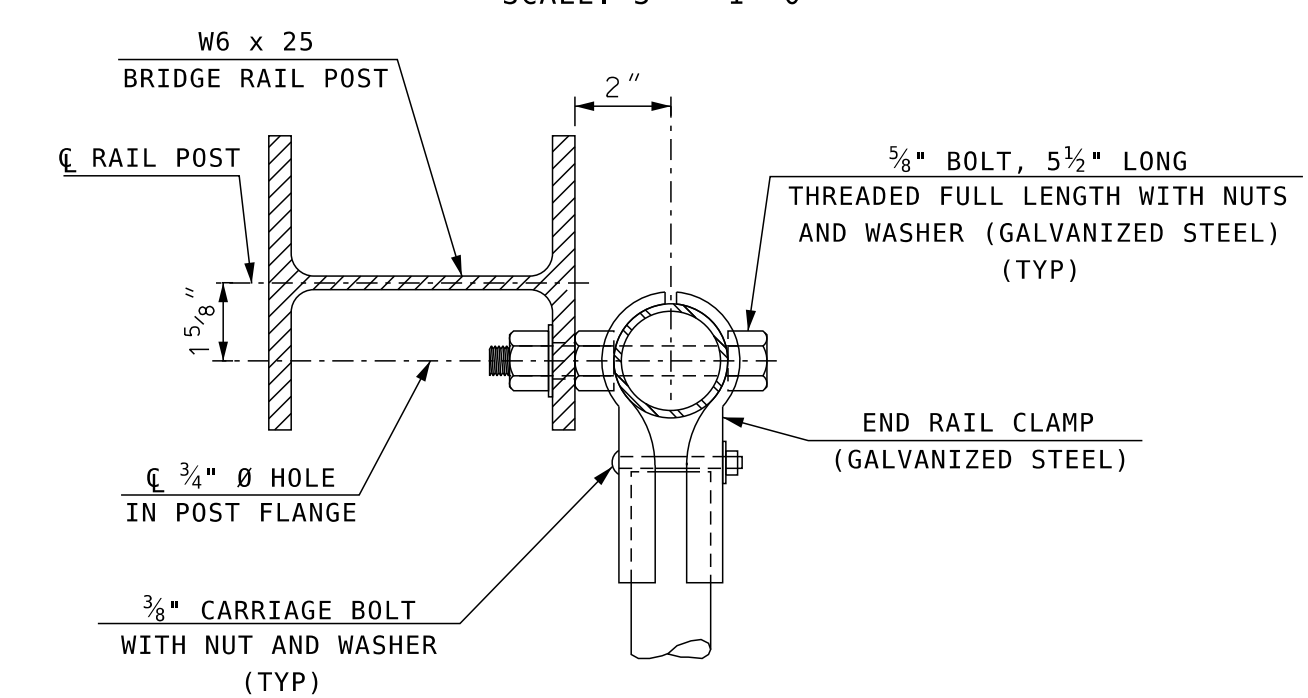
TENSION BAND DETAIL

SCALE: 6" = 1'-0"



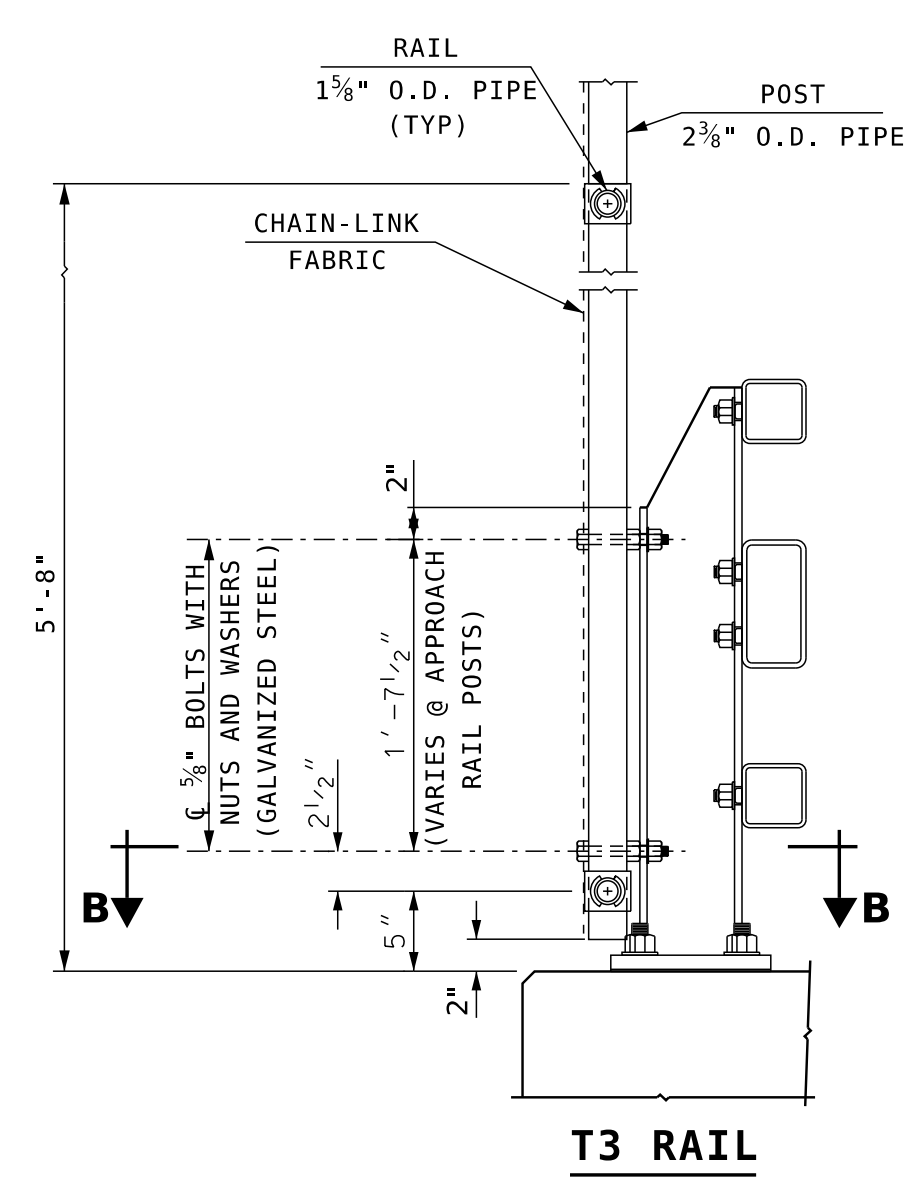
SECTION A-A (AT INTERIOR POST)

SCALE: 3" = 1'-0"



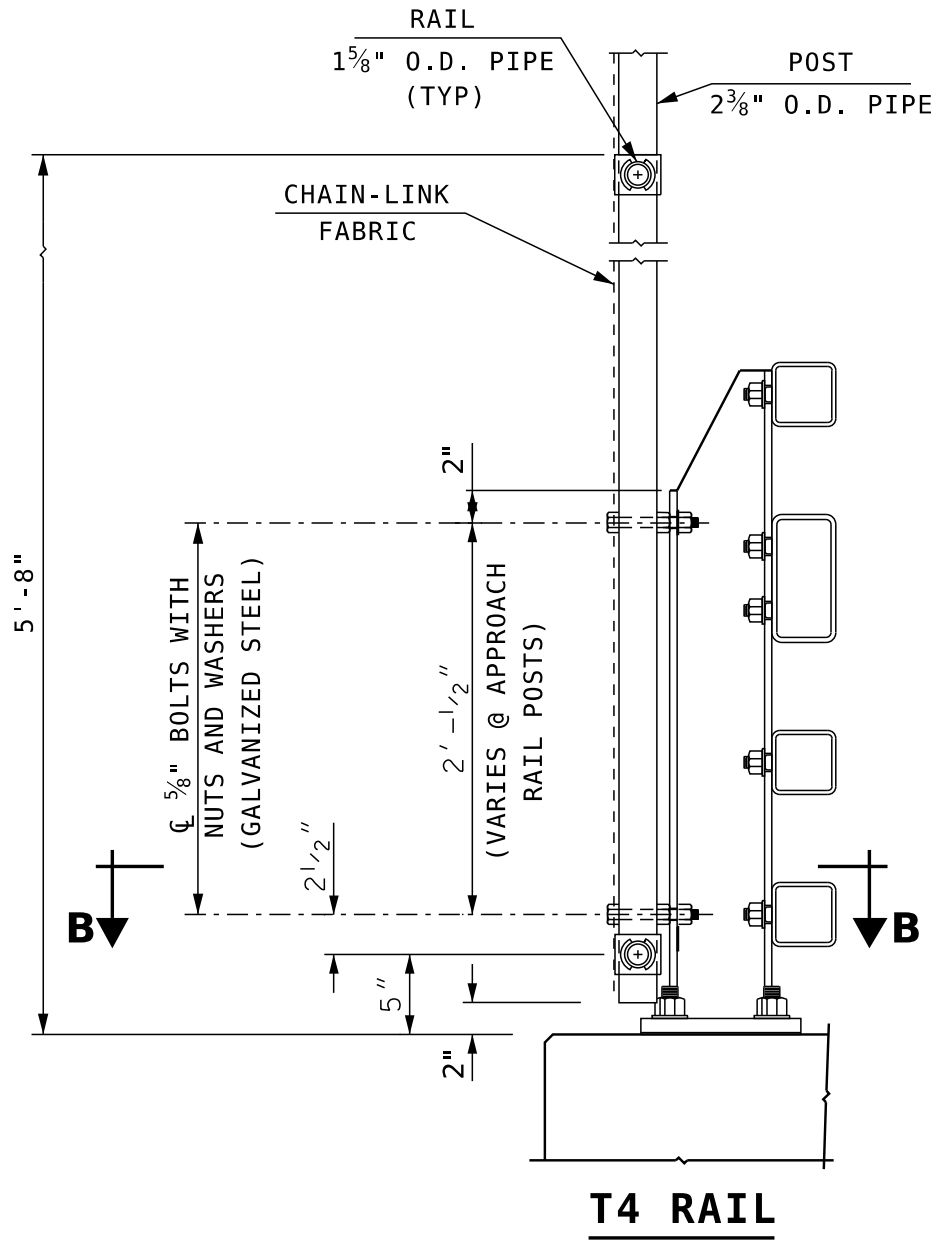
SECTION A-A (AT END POST)

SCALE: 3" = 1'-0"



POST CONNECTION DETAILS

SCALE: 1" = 1'-0"



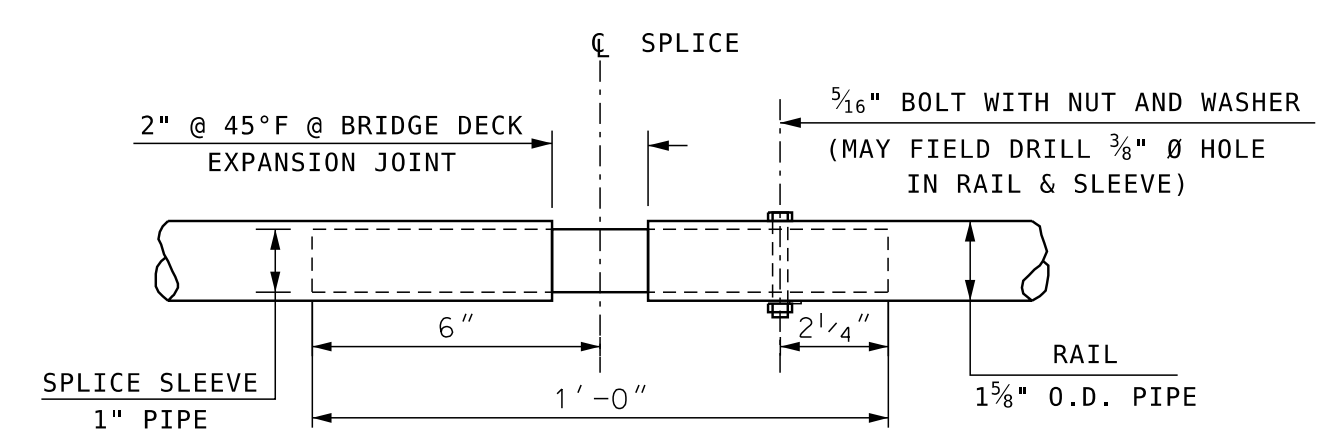
T4 RAIL

T3 RAIL

NO MODIFICATIONS SHALL BE MADE TO THIS SHEET

GENERAL NOTES

- CHAIN-LINK FABRIC SHALL BE 9 GAUGE STEEL, ALUMINUM-COATED CONFORMING TO ASHTO M 181, TYPE II (ASTM A 491). CHAIN-LINK FABRIC SHALL BE KNUCKLED ON TOP AND BOTTOM. THE SIZE OF WIRE MESH (FABRIC) SHALL BE 1 1/2".
- HOOK-TYPE TIES SHALL BE STANDARD ROUND 9 GAUGE ALUMINUM-COATED STEEL OR 6 GAUGE ALUMINUM ALLOY CONFORMING TO ASTM F626. HOOK-TYPE TIES SHALL BE WRAPPED AROUND CHAIN-LINK FABRIC TWICE (DOUBLE PIGTAILED) AT BOTH ENDS. AN APPROVED ALTERNATIVE: POWER FASTENED PREFORMED TYPE TIES SHALL BE 9 GAUGE PREFORMED GALVANIZED STEEL ROUND WIRE CONFORMING TO ASTM F567-14 8.4. SPACE TIES @ 6" O.C. TO BOTTOM RAIL AND @ 12" O.C. TO ALL POSTS AND OTHER RAILS.
- POSTS AND RAIL PIPES SHALL BE HOT-DIP GALVANIZED STEEL CONFORMING TO AASHTO M 181, GRADE 1 (ASTM F 1083). ALL PIPES SHALL BE SCHEDULE 40, STANDARD WEIGHT.
- TENSION BARS, BAR BANDS, IN-LINE CLAMPS AND END RAIL CLAMPS SHALL BE STEEL. STEEL COMPONENTS SHALL BE HOT-DIP GALVANIZED IN ACCORDANCE WITH AASHTO M 111 (ASTM A 123) OR AASHTO M 232 (ASTM A 153) AS APPLICABLE. ALL BAR BANDS SHALL HAVE A BEVELED EDGE.
- ALL BOLTS AND NUTS SHALL BE STEEL CONFORMING TO ASTM A 307 AND ASTM A 563 GRADE A RESPECTIVELY. WASHERS SHALL BE HARDENED STEEL COMMERCIAL TYPE A PLAIN AND SHALL MEET THE DIMENSIONAL REQUIREMENTS OF ANSI B18.22. ALL BOLTS, NUTS AND WASHERS SHALL BE HOT-DIP GALVANIZED IN ACCORDANCE WITH AASHTO M 111 (ASTM A 123) OR AASHTO M 232 (ASTM A 153) AS APPLICABLE.
- RAIL SPLICES SHALL BE PROVIDED AT BRIDGE DECK EXPANSION JOINT(S) AND BRIDGE RAIL SPLICES AS DIRECTED BY THE CONTRACT ADMINISTRATOR.
- RAIL MAY BE FIELD CUT (SAWN) TO FIT POST SPACING. GALVANIZED RAIL, CUT OR DRILLED AS ALLOWED, SHALL BE TOUCHED-UP IN ACCORDANCE WITH 563.3.2.2.3.
- ALL COSTS FOR CHAIN-LINK FABRIC, POSTS, RAILS AND APPURTENANCES SHALL BE INCLUDED IN ITEM 563.231 OR ITEM 563.241, BRIDGE RAIL T3 OR T4 WITH PROTECTIVE SCREENING, OR ITEM 563.94, PROTECTIVE SCREENING FOR OVERPASS STRUCTURES, AS APPLICABLE.
- SEE BRIDGE RAIL SHEET FOR ADDITIONAL DETAILS.



RAIL SPLICE DETAIL

SCALE: 3" = 1'-0"

STATE OF NEW HAMPSHIRE									
DEPARTMENT OF TRANSPORTATION * BUREAU OF BRIDGE DESIGN									
TOWN	BRIDGE NO.				STATE PROJECT				
LOCATION									
PROTECTIVE SCREEN W/ STEEL BRIDGE RAIL									
REVISIONS AFTER PROPOSAL	BY	DATE	BY	DATE	BRIDGE SHEET				
	DESIGNED	NHDOT	8/10	CHECKED	NHDOT	8/10	XX OF		
	DRAWN	PJP	8/10	CHECKED	MGL	8/10	FILE NUMBER		
QUANTITIES									
ISSUE DATE	11/98	FEDERAL PROJECT NO.		SHEET NO.		TOTAL SHEETS			
REV. DATE	12/11/28								

SUBDIRECTORY	.DGN LOCATOR	SHEET SCALE
BR-RAIL-ST	BR-PROSCREEN clipped rail	AS NOTED