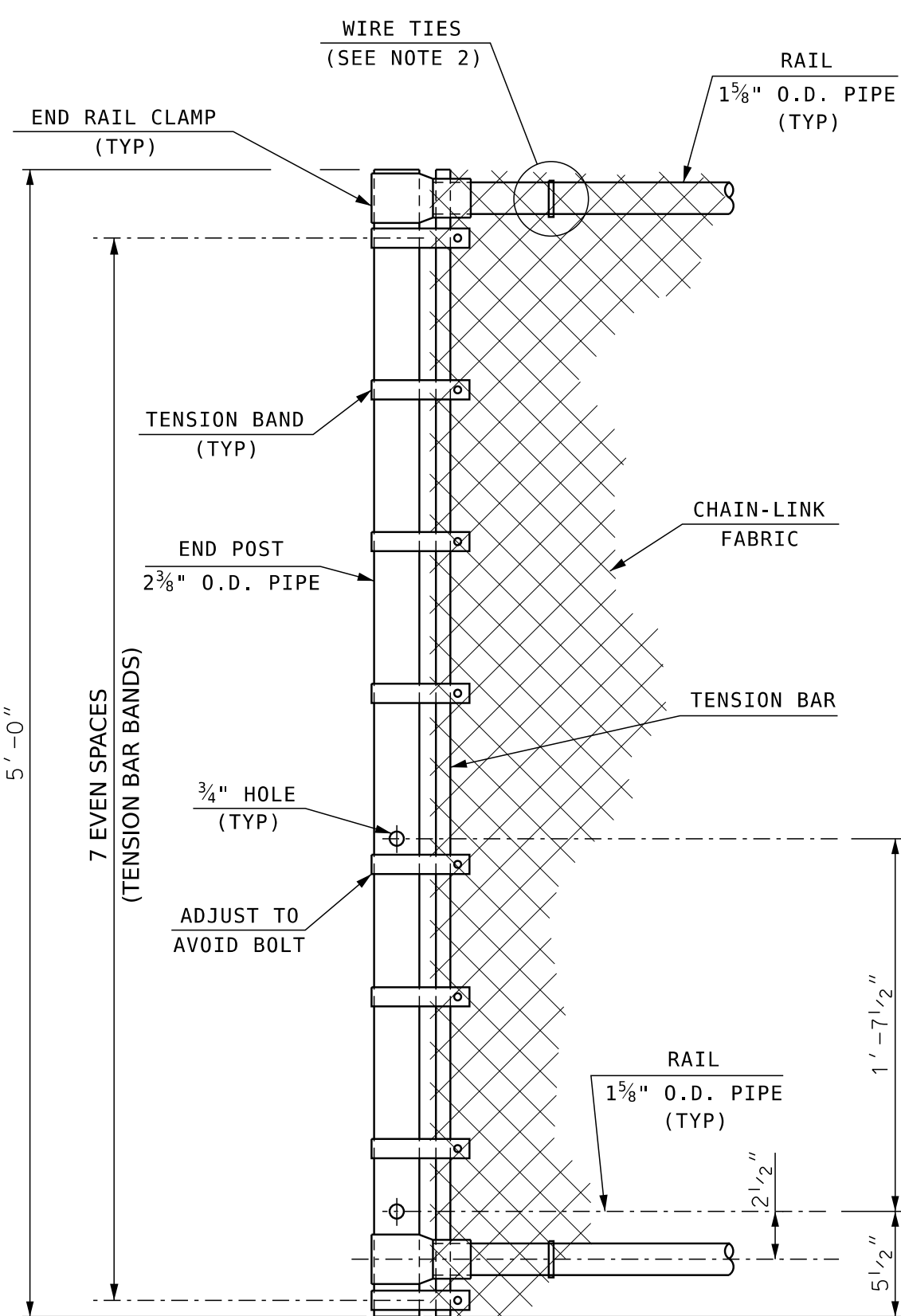


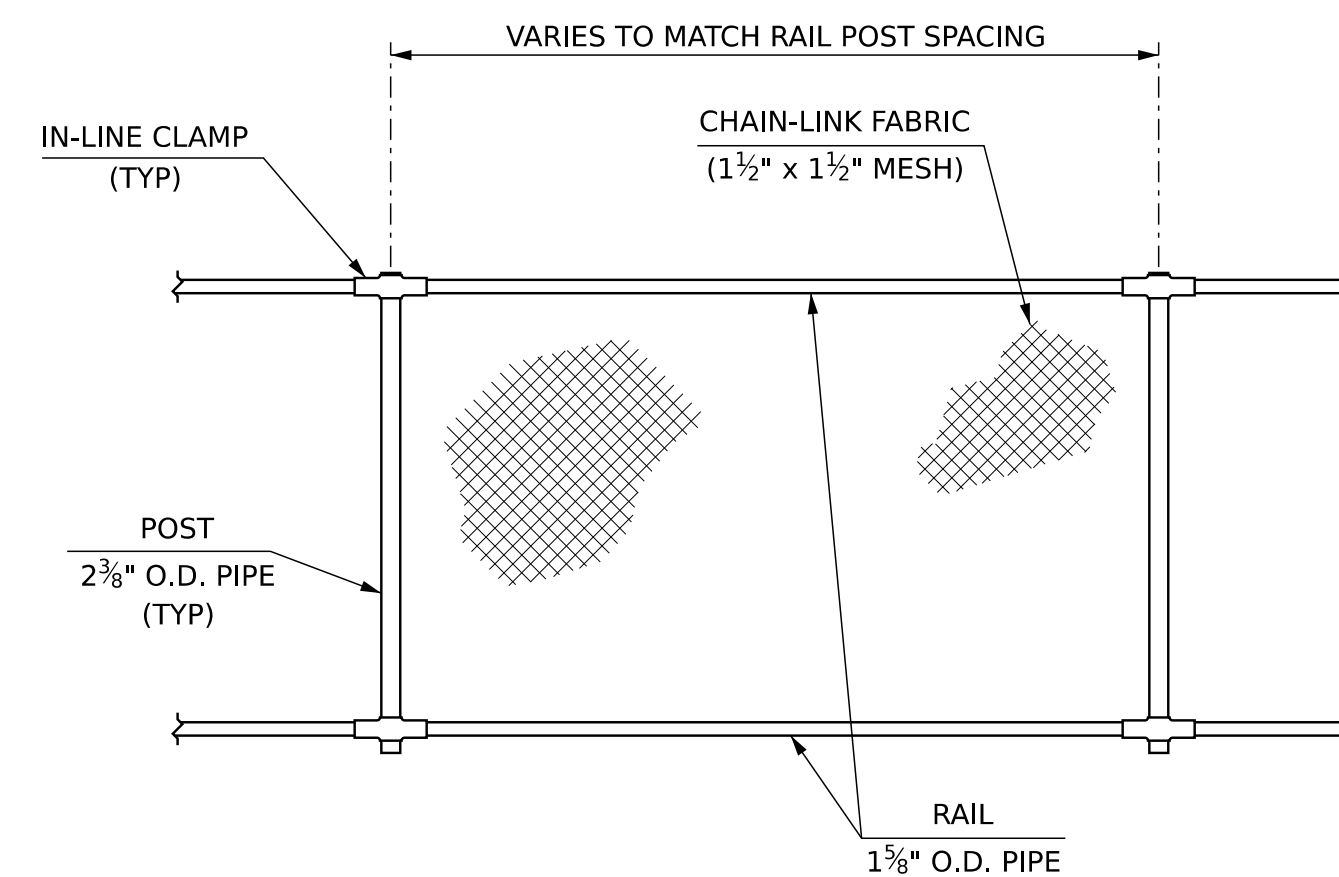
TYPICAL SECTION

(T3 BRIDGE RAIL)
SCALE: 1 1/2" = 1'-0"



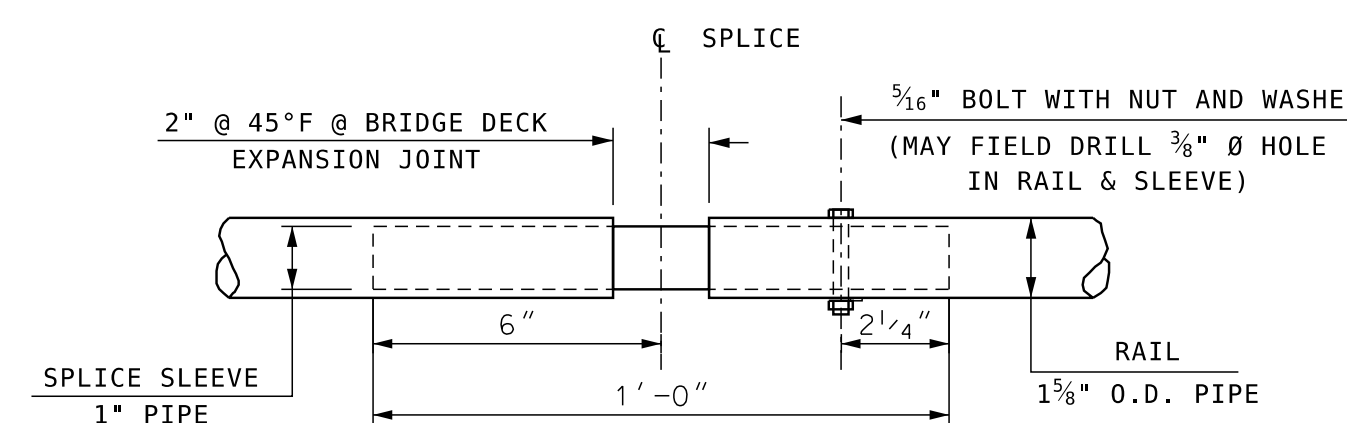
END POST DETAIL

SCALE: 1 1/2" = 1'-0"



ELEVATION - SNOW SCREENING

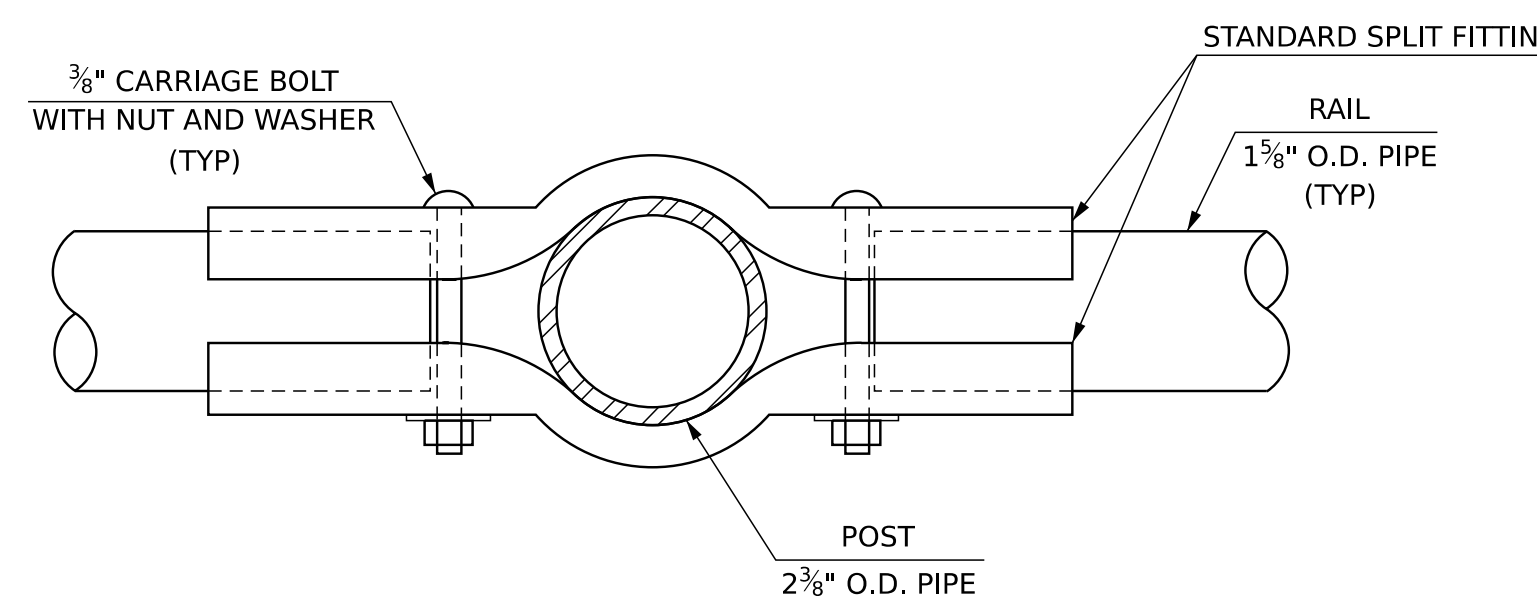
SCALE: 1/2" = 1'-0"



RAIL SPLICE DETAIL

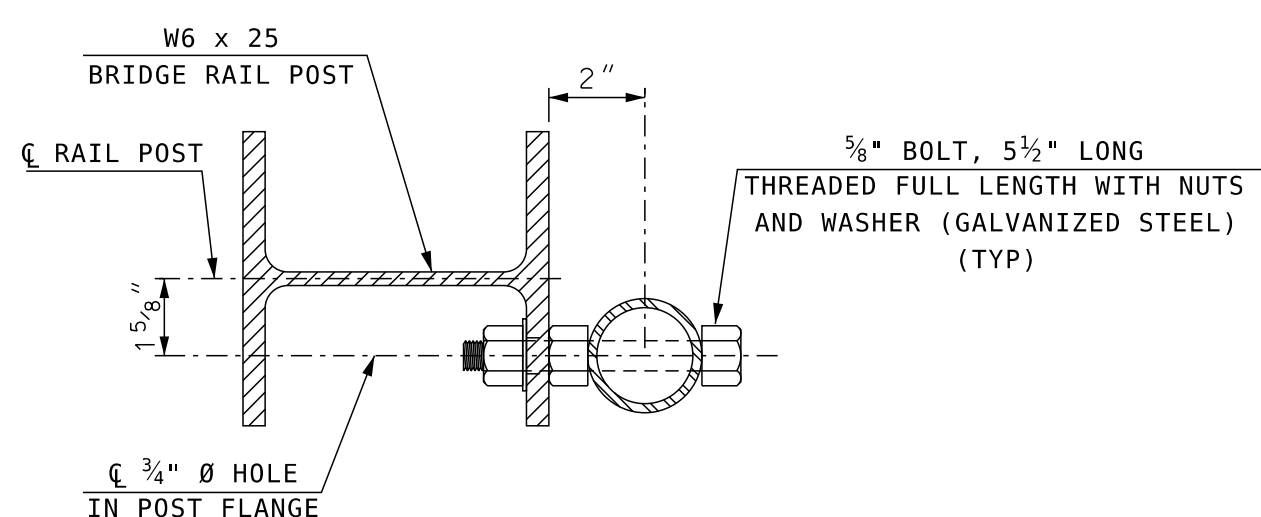
SCALE: 3" = 1'-0"

NO MODIFICATIONS SHALL BE MADE TO THIS SHEET



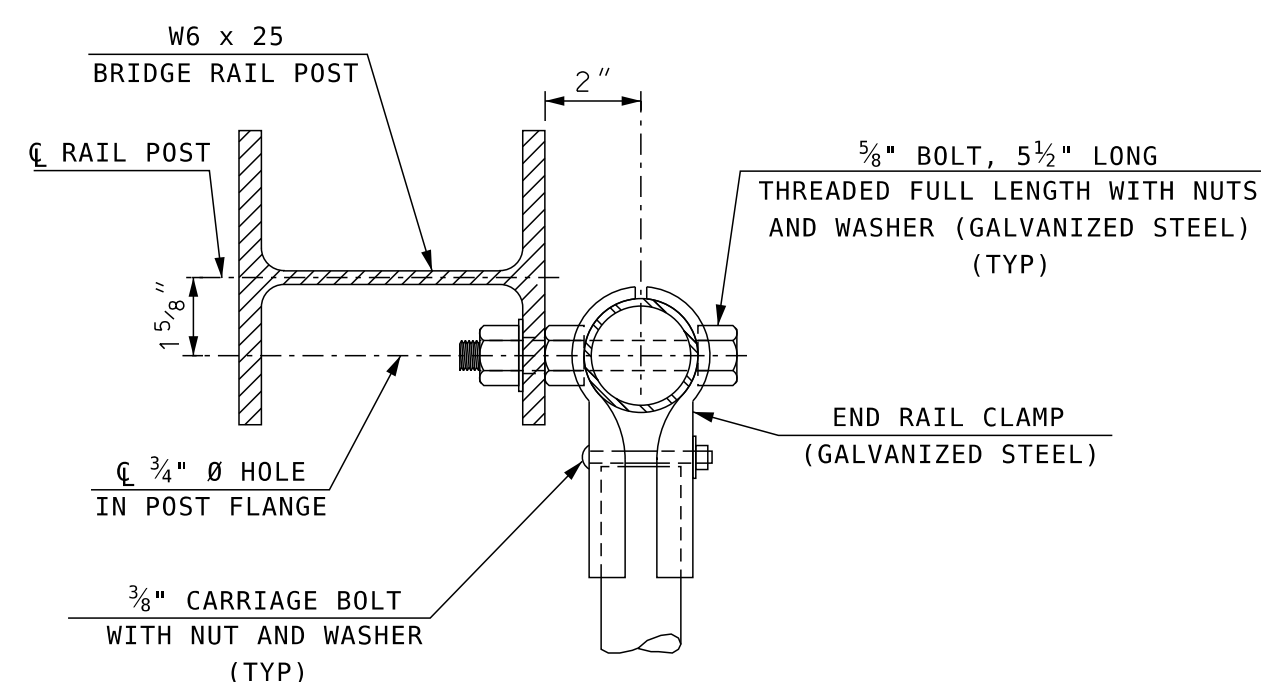
IN-LINE CLAMP DETAIL

SCALE: 6" = 1'-0"



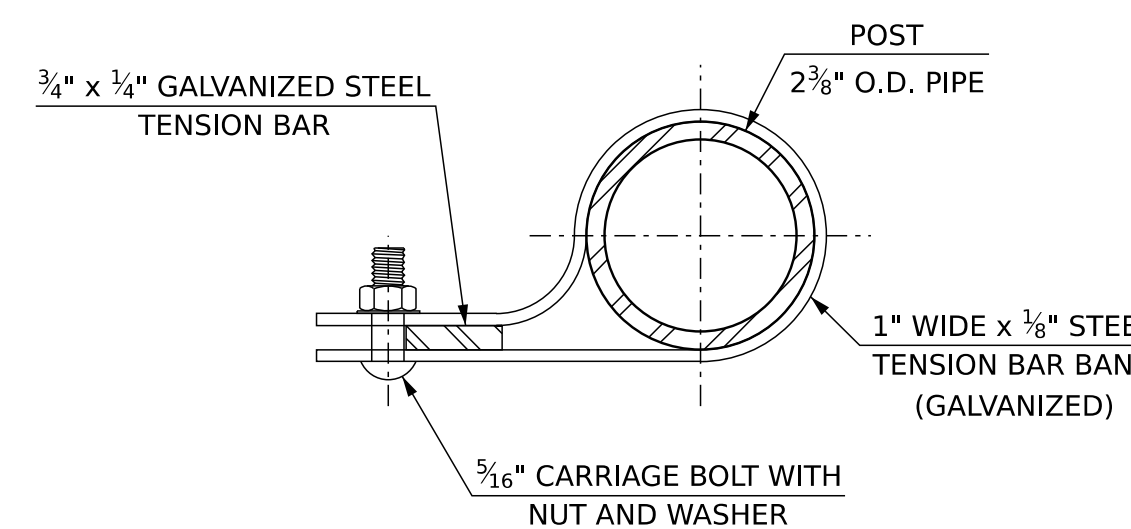
SECTION A-A

(AT INTERIOR POST)
SCALE: 3" = 1'-0"



SECTION A-A

(AT END POST)
SCALE: 3" = 1'-0"



TENSION BAND DETAIL

SCALE: 6" = 1'-0"

GENERAL NOTES

- CHAIN-LINK FABRIC SHALL BE 9 GAUGE STEEL, ALUMINUM-COATED CONFORMING TO ASHTO M 181, TYPE II (ASTM A 491). CHAIN-LINK FABRIC SHALL BE KNUCKLED ON TOP AND BOTTOM. THE SIZE OF WIRE MESH (FABRIC) SHALL BE 1 1/2".
- HOOK-TYPE TIES SHALL BE STANDARD ROUND 9 GAUGE ALUMINUM-COATED STEEL OR 6 GAUGE ALUMINUM ALLOY CONFORMING TO ASTM F626. HOOK-TYPE TIES SHALL BE WRAPPED AROUND CHAIN-LINK FABRIC TWICE (DOUBLE PIGTAILED) AT BOTH ENDS. AN APPROVED ALTERNATIVE: POWER FASTENED PREFORMED TYPE TIES SHALL BE 9 GAUGE PREFORMED GALVANIZED STEEL ROUND WIRE CONFORMING TO ASTM F567-14 8.4. SPACE TIES @ 6" O.C. TO BOTTOM RAIL AND @ 12" O.C. TO ALL POSTS AND OTHER RAILS.
- POSTS AND RAIL PIPES SHALL BE HOT-DIP GALVANIZED STEEL CONFORMING TO AASHTO M 181, GRADE 1 (ASTM F 1083). ALL PIPES SHALL BE SCHEDULE 40, STANDARD WEIGHT.
- TENSION BARS, BAR BANDS, IN-LINE CLAMPS AND END RAIL CLAMPS SHALL BE STEEL. STEEL COMPONENTS SHALL BE HOT-DIP GALVANIZED IN ACCORDANCE WITH AASHTO M 111 (ASTM A 123) OR AASHTO M 232 (ASTM A 153) AS APPLICABLE. ALL BAR BANDS SHALL HAVE A BEVELED EDGE.
- ALL BOLTS AND NUTS SHALL BE STEEL CONFORMING TO ASTM A 307 AND ASTM A 563 GRADE A RESPECTIVELY. WASHERS SHALL BE HARDENED STEEL COMMERCIAL TYPE A PLAIN AND SHALL MEET THE DIMENSIONAL REQUIREMENTS OF ANSI B18.22. ALL BOLTS, NUTS AND WASHERS SHALL BE HOT-DIP GALVANIZED IN ACCORDANCE WITH AASHTO M 111 (ASTM A 123) OR AASHTO M 232 (ASTM A 153) AS APPLICABLE.
- RAIL SPLICES SHALL BE PROVIDED AT BRIDGE DECK EXPANSION JOINT(S) AND BRIDGE RAIL SPLICES AS DIRECTED BY THE CONTRACT ADMINISTRATOR.
- RAIL MAY BE FIELD CUT (SAWN) TO FIT POST SPACING. GALVANIZED RAIL, CUT OR DRILLED AS ALLOWED, SHALL BE TOUCHED-UP IN ACCORDANCE WITH 563.3.2.2.3.
- ALL COSTS FOR CHAIN-LINK FABRIC, POSTS, RAILS AND APPURTENANCES SHALL BE INCLUDED IN ITEM 563.233, BRIDGE RAIL T3 WITH SNOW SCREENING, OR ITEM 563.95, SNOW SCREENING FOR OVERPASS STRUCTURES, AS APPLICABLE.
- SEE BRIDGE RAIL SHEET FOR ADDITIONAL DETAILS.

STATE OF NEW HAMPSHIRE									
DEPARTMENT OF TRANSPORTATION * BUREAU OF BRIDGE DESIGN									
TOWN		BRIDGE NO.			STATE PROJECT				
LOCATION									
SNOW SCREEN WITH STEEL BRIDGE RAIL								BRIDGE SHEET	
REVISIONS AFTER PROPOSAL		BY		DATE		BY		DATE	
		NHDOT		8/10		NHDOT		8/10	
		PJP		8/10		MGL		8/10	
		CHECKED		CHECKED		CHECKED		XX/XX	
ISSUE DATE		2/98		FEDERAL PROJECT NO.		SHEET NO.		TOTAL SHEETS	
REV. DATE		12/11/21							

SUBDIRECTORY	.DGN LOCATOR	SHEET SCALE
BR-RAIL-ST	BR-SNOWSCREEN Clipped Rail AS NOTED	