

January 18, 2024



Tobey Reynolds, PE
Assistant Director of Project Development
New Hampshire Department of Transportation
7 Hazen Drive
Concord, NH 03302

Statewide On-Call Preliminary Engineering Prequalified List of Consultants for locally administered Local Public Agency (LPA) Qualifications-Based Selection Contracts

Dear Tobey:

Gorrill Palmer is pleased to submit this Prequalification Package for statewide on-call engineering services for LPA projects. This letter of interest will demonstrate that our team brings the qualifications and depth of experience to successfully complete LPA assignments for municipalities throughout New Hampshire.

Team Experience & Qualifications – Gorrill Palmer is a full-service engineering firm with significant transportation planning & engineering experience that focuses on Relationships, Responsiveness and Results for our clients. We have been completing similar LPA services for municipal clients in the state of Maine for over ten years. **Gorrill Palmer will serve as the prime consultant** and will provide Highway Design services on this assignment. We are pleased to propose Project Manager, **Randy Dunton, PE, PTOE** and Principal-In-Charge, **Don Ettinger, PE** for these services. Both are PE licensed and LPA certified in New Hampshire and combined they bring over 45 years of transportation planning and design experience. They will be supported by a team of professionals within Gorrill Palmer as described in this proposal.

Gorrill Palmer has partnered with **Kleinfelder** to provide Bridge Design services on this assignment. Kleinfelder has been providing engineering services for New Hampshire clients for over 25 years. Their services will complement our services well. We are also teamed with **Normandeau Associates** for environmental and permitting support services, **Doucet Survey** for survey and right of way support services, and **Haley Aldrich** for geotechnical support services. The combined experience and qualifications of our team make us well suited for this assignment.

Project Understanding – Gorrill Palmer has been designing and inspecting local administered transportation projects for Maine DOT and communities throughout Maine for many years. The types of LPA assignments that we have worked on include highway, intersection, pedestrian and bicycle accommodation projects. Those projects have included drainage design and include preliminary and final design and preparation of contract plans and supporting bid documents. We also have experience designing park & ride lots, including one facility as an LPA project.

We are familiar with the requirements of this solicitation and will bring a design team that will provide design services in accordance with the NHDOT LPA deliverable requirements, and **we look forward to working closely with the New Hampshire communities to guide and advise them to ensure work is completed in accordance with those NHDOT design and deliverable expectations.** Gorrill Palmer believes in building and maintaining strong relationships to thoroughly understand our clients' needs. We are committed to providing the highest quality of service to our clients and we look forward to demonstrating those capabilities through this solicitation.

Thank you for the opportunity to submit a prequalification package on this solicitation. Please feel free to contact us with any questions or comments.

Sincerely,
GORRILL PALMER

A handwritten signature in black ink, appearing to read 'Don Ettinger', is written over a light blue horizontal line.

Don Ettinger, PE, Principal
dettinger@gorrillpalmer.com



PROJECT UNDERSTANDING AND APPROACH

Capabilities and Qualifications – Gorrill Palmer is an integrated transportation, municipal and land development engineering firm that has been providing quality professional service to clients throughout New England since 1998 and the Mid-Atlantic area since 2013. Since our founding, Gorrill Palmer has been consistently recognized for our expertise, experience, and responsiveness, resulting in outstanding value for our clients.

At Gorrill Palmer, we have created a work environment built upon integrity, skill, and service. Our team includes individuals with expertise in transportation planning and engineering, municipal engineering, land development, environmental permitting, and construction observation. With staff in Maine and Virginia, Gorrill Palmer's committed staff is well respected for our attention to detail and ability to consistently deliver high quality, innovative and cost-effective designs to our clients.

Gorrill Palmer takes pride in adhering to its “3R” core values of **Relationships, Responsiveness and Results**. The success of any project can be based on our firm's ability to effectively communicate with our clients and the public. Responsiveness can be defined as meeting a project deadline or having a principal of our firm actively involved in every project. Results can be defined as delivering a quality product and/or listening to our client's needs and delivering a product that meets those needs. It is these core values that Gorrill Palmer will bring to this important assignment to ensure project success.

In terms of services provided, Gorrill Palmer is a full-service transportation planning, land development, and municipal engineering firm that provides the following services:

Roadway and Intersection Design
Bicycle & Pedestrian Facility Design
Parking & Transit Facility Design
Intersection Signal & Roundabout Design
Stormwater Management / Erosion Control
Transportation Feasibility Studies
Corridor Planning Studies
Traffic Analysis and Design
High Crash Location Mitigation Assessment
Management of Access Control
Traffic Impact Studies

Transportation Demand Management
Local, State and Federal Permitting
Construction Inspection Services
Low Impact Development
Green Infrastructure
Neighborhood Traffic Calming
Capital Improvement Planning Assistance
Utility Design
Multi-Use Trail Design
Parking Studies
Traffic Movement Permits

Gorrill Palmer has over 40 employees, including twelve licensed professional engineers, twenty project and design engineers, five CAD technicians and three administrative staff. We have six staff members that are MaineDOT local project administration (LPA) certified including Don Ettinger, Randy Dunton, Brandon Havu, Jared Winchenbach, and Travis Landry. We have two staff members that are NHDOT LPA certified, and PE licensed including Don Ettinger and Randy Dunton. We have thirteen individuals that are dedicated to the transportation planning and transportation engineering groups within the firm, including six professional engineers.

Bridge Services – We are pleased to partner with **Kleinfelder** to provide bridge design services on this assignment. Kleinfelder brings New Hampshire experience and qualifications in preservation, rehabilitation and replacement of bridge structures. They have experience in completing bridge type studies, preliminary design, final design and bridge construction inspection services. They are also qualified to perform non-construction bridge inspections and bridge load ratings on existing structures.

Environmental Services – We are pleased to partner with **Normandeau Associates** to provide environmental regulatory compliance, natural resources permitting, and cultural resource compliance. Normandeau Associates bring well established relationships with the New Hampshire environmental regulatory agencies which will allow for our team to navigate through the environmental permitting process more efficiently.

Survey and Right-of-Way – We are pleased to partner with **Doucet Survey** to provide topographic survey and right-of-way (ROW) services on this assignment. Doucet Survey has extensive experience working on NHDOT projects.



In addition to survey base mapping, Doucet provides ROW services including ROW mapping, property owner outreach, easement negotiation, property evaluation, and deed recording assistance.

Geotechnical – We are pleased to partner with **Haley Aldrich** to provide geotechnical design services in support of LPA assignments. Haley Aldrich is a national leader on geotechnical design services and brings experience working for NHDOT. They will assist with geotechnical analysis, evaluations, retaining wall designs, and bridge substructure evaluations.

Related Project Experience – Gorrill Palmer brings extensive transportation planning and design experience working on locally administered projects. Below is a summary of recent and ongoing transportation related LPA projects that Gorrill Palmer is involved in:

- **Main, Mill and Broad Street Improvements**, Auburn, Maine – Work included roadway, intersection, drainage, traffic signal, bike and pedestrian facility designs. Services included preliminary design, final design and construction inspection services.
- **Broadway Improvements**, Bangor, Maine – Work included roadway, intersection, drainage, traffic signal, bike and pedestrian facility designs. Work also included design improvements to interstate ramps. Services included preliminary design and final design.
- **Somerset Street Improvements**, Portland, Maine – Work included roadway, intersection, drainage, parking, bike (multi-use trail) and pedestrian facility designs. Services included preliminary design and final design.
- **River Road Improvements**, Lewiston, Maine – Work included roadway and drainage design. Services included preliminary design and final design.
- **Cedar Street Parking Lot Improvements**, Brunswick, Maine – Work included roadway, intersection, parking, drainage, lighting, transit, and pedestrian facility designs. Services included preliminary design, final design and construction inspection services.
- **Hotel Road Improvements**, Auburn, Maine – Work included roadway, intersection, and drainage designs. Services included preliminary design and final design.
- **Oak Grove, Judkins Ave, Old Brunswick Road Sidewalk Improvements**, Bath, Maine – Work included sidewalk, pathway, roadway, intersection, and drainage designs. Services included preliminary design, final design and construction inspection services.
- **Route 35 Sidewalk Improvements**, Windham, Maine – Work included sidewalk, intersection, drainage, and traffic signal facility designs. Services included preliminary design, final design and construction inspection services.
- **West Commercial Street Pathway Improvements**, Portland, Maine – Work included sidewalk, pathway, and drainage designs. Services included preliminary design and final design.
- **Emerson Street Park & Ride Lot Improvements**, Sanford, Maine – Work included parking, drainage, lighting, landscaping, transit, and pedestrian facility designs. Services included preliminary design and final design.
- **Stetson Road Improvements**, Lewiston, Maine – Work included roadway and drainage design. Services included preliminary design and final design.
- **Park Ave Improvements**, Auburn, Maine – Work included roadway, intersection, drainage, bike (multi-use trail) and pedestrian facility designs. Services included preliminary design and final design.

While most of our LPA experience resides in the state of Maine, it is worth noting that our corporate office is in South Portland, Maine which is only 90 minutes from Concord and NHDOT offices. Being in southern Maine will allow us the opportunity to service the municipal clients throughout New Hampshire easily. We are committed to providing the same levels of high-quality service to the New Hampshire municipalities as we do with our current municipal clients in Maine.

**ORGANIZATIONAL
CHART**



PRINCIPAL-IN-CHARGE
Don Ettinger, PE * **

PROJECT MANAGER
Randy Dunton, PE * **
Don Ettinger, PE * **

HIGHWAY ENGINEERS

Brandon Havu, PE
Sr. Highway Engineer/Project Manager

Jared Winchenbach, PE
Highway Engineer/Project Manager

Travis Landry, PE
Highway Engineer/Project Manager

Trey Warren, PE
Lead Highway Engineer

Matt Richard
Lead Highway Engineer

Jeff Fitzmaurice
Lead Highway Engineer

Arthur Bonney, PE
Sr. Highway Engineer, Kleinfelder

BRIDGE ENGINEERS

William Ashford, PE * **
Sr. Bridge Engineer/Project Manager, Kleinfelder

Keith Wood, PE * **
Lead Bridge Engineer/Project Manager, Kleinfelder

Amy Floren, PE *
Sr. Bridge Engineer/Project Manager, Kleinfelder

Rafic Khalil, PE *
Sr. Bridge Engineer/Project Manager, Kleinfelder

Marcia Kelly, PE *
Sr. Bridge Engineer/Project Manager, Kleinfelder

SUPPORT SERVICES

<p>Geotechnical Engineering Erin Force, PE * Geotechnical Eng, Haley Aldrich</p>	<p>Environmental Permitting Lee Carbonneau, PWS/CWS * Sr. Wetland Scientist, Normandeau</p>	<p>Survey/Right-of-Way William Doucet, PS * Doucet Survey</p>
---	--	--

* Denotes NH PE License
** Denotes NHDOT LPA Certification



PROJECT TEAM

The **Gorrill Palmer Team** will be led by **Don Ettinger PE, Project Manager**. Don oversees the Gorrill Palmer's transportation group and has over 25 years of experience as a Principal, Group Leader, and Project Manager. He is LPA certified with NHDOT and is a NH licensed professional engineer. Don brings experience working on federally funded LPA projects that include roadway, intersection, traffic signal, pedestrian and bicycle improvements. He also has experience working on parking facility projects, transportation planning studies, feasibility studies, safety audits and safety mitigation projects. He brings over 20 years of experience in facilitating projects through the public and municipal approval process. Don is supported by the following team leaders:

Randy Dunton PE, PTOE, Project Manager / Sr. Traffic Engineer - Randy is a partner at Gorrill Palmer and will oversee the traffic and transportation planning related services. He brings almost 30 years of experience in traffic and transportation engineering and served as a Regional Traffic Engineer for MaineDOT prior to joining Gorrill Palmer in 2007. Randy is LPA certified with NHDOT and is a NH licensed professional engineer. His experience includes traffic related LPA assignments, transportation planning studies, safety audits, traffic impact studies and traffic movement permits in both Maine and New Hampshire.

Brandon Havu PE, Project Manager / Sr. Highway Engineer - Brandon will assist with Gorrill Palmer's transportation design development and project management services. He brings 13 years of experience in design and management of roadway, bridge and multimodal projects. He has LPA experience working on roadway, sidewalk, multiuse trail, intersection and paving with ADA improvement projects. Prior to joining Gorrill Palmer in 2014 (& rejoining in 2022), he worked for HNTB Corporation, where he gained experience on NHDOT / Bureau of Turnpikes projects including the Hooksett I-93 Open Road Toll Plaza conversion. Brandon is well versed in the NHDOT design standards.

Jared Winchenbach PE, Project Manager / Highway Engineer – Jared is a partner at Gorrill Palmer and assists with transportation planning and design development as well as project management and construction inspection services. He brings 9 years of experience in planning, design and management of roadway, multimodal, and LPA projects. His LPA experience includes pavement preservation with ADA improvement projects, sidewalk and intersection projects, parking lot projects, and complete street projects with bike, pedestrian, parking and transit accommodations. He is well versed in the federal design standards and latest NACTO policies.

Travis Landry PE, Project Manager / Highway Engineer – Travis assists with Gorrill Palmer's transportation design development, project management and construction inspection services. He brings 9 years of experience in design, management and inspection of LPA roadways, intersections, traffic signals, pedestrian and bicycle improvement projects. His experience includes intersection and traffic signal projects, complete street projects, bike and pedestrian projects and transit accommodations projects.

William Ashford PE, Project Manager / Sr. Bridge Engineer - Bill works for Kleinfelder and has over 34 years of experience as a project manager, construction engineering and inspection, and QA/QC with LPA bridge and roadway projects and State Bridge Aid projects. He is a NH licensed PE and is certified in LPA. He has either performed and/or managed engineering and construction phase services for municipal transportation projects, including coordinating environmental, right-of-way, and public involvement.

Keith Wood PE, Project Manager / Lead Bridge Engineer - Keith works for Kleinfelder and has over 20 years of experience in bridge design. He has successfully completed a variety of bridge projects, including short, medium, and long spans, simple and multi- span, along with bridge rehabilitation and replacement, evaluation/engineering studies, multi-use trails, pedestrian bridges, bridge approaches, highway reconstruction, and construction support service projects. In addition, he has led numerous LRFR Bridge Rating assignments and performs refined analysis and finite element modeling. He is NHDOT LPA certified and has direct NHDOT LPA project experience, most recently the Oak Street Bridge and Sand Hill Road Bridge in Newport.



Subconsultants

In addition to the **Kleinfelder** teaming to provide bridge design support services, we have teamed with the following firms and service lines:

Normandeau Associates - Lee Carbonneau, CWS, is a Sr. Principal Scientist with over 30 years' experience assessing terrestrial and wetland communities. She has provided wetland and wildlife surveys, permitting, and mitigation for many NHDOT projects.

Doucet Survey - William Doucet, PS has intimate knowledge of NHDOT requirements and will lead topographic survey and Right-of-Way (ROW) services. He has worked on many NHDOT and municipal projects.

Haley Aldrich – Erin Force, PE is a geotechnical engineer with over 25 years of experience working on projects throughout the northeast, including NHDOT projects.

REFERENCES



Reference #1

Client Name	Maine Department of Transportation
Address	16 State House Station; Augusta, ME 04333-0016
Contact	Bradford Foley, P.E.
Title	Highway Program Manager
Email	Brad.Foley@maine.gov
Phone	207.624.3000
Project(s)	<p>MaineDOT Highway Program Assignments</p> <ul style="list-style-type: none"> • Jay – Route 4/17 Reconstruction • East Machias – Route 1 Reconstruction/Rehabilitation • Milbridge-Harrington – Route 1A Reconstruction/Rehabilitation • Van Buren – Route 1 Rehabilitation • Portland – Forest Avenue Improvements • Portland – Congress Street Signal Improvements • Large Culvert Replacements/Rehabilitations – Misc. Locations

Reference #2

Client Name	Maine Department of Transportation
Address	16 State House Station; Augusta, ME 04333-0016
Contact	Jeffrey Tweedie, P.E.
Title	Multimodal Program Manager & LPA Program Manager
Email	Jeff.Tweedie@maine.gov
Phone	207.624.3427
Project(s)	<p>MaineDOT Multimodal Program Assignments & Locally Administered Projects</p> <ul style="list-style-type: none"> • Augusta – Route 27 at Darin Drive Improvements • Auburn – Hotel Road Improvements • Kittery – Memorial Traffic Circle Improvements • Bangor – Broadway Improvements • Portland – Thompson’s Point Road and Exit 5 Improvements • Lewiston – Stetson Road Improvements • South Portland – Broadway Improvements • South Berwick – Route 236 & Route 91 Intersection Improvements • Limestone – High Street Sidewalk Improvements • Trenton – Route 3 & Route 204 Intersection Improvements • Signal Replacements/Modifications – Misc. Locations

Reference #3

Client Name	Maine Department of Transportation
Address	16 State House Station; Augusta, ME 04333-0016
Contact	Rhobe Moulton
Title	Senior Project Manager (Highway Program)
Email	Rhobe.Moulton@maine.gov
Phone	207.624.3391
Project(s)	<p>MaineDOT Highway Program Assignments</p> <ul style="list-style-type: none"> • Jay – Route 4/17 Reconstruction • Milbridge/Cherryfield – Route 1 Reconstruction/Rehabilitation • Milbridge/Harrington – Route 1A Improvements

APPENDIX - RESUMES



Education - BS, Civil Engineering.
University of New Hampshire,
1989

Registrations- Professional
Engineer (PE): NH #9777

Certifications

Local Public Agency Certification,
No. 2176, NHDOT

Local Project Administration,
MaineDOT

WILLIAM ASHFORD, PE

Project Manager - Kleinfelder

Mr. Ashford has over 34 years of experience in Construction Engineering and Inspection, Program and Project management, and Quality Assurance/Quality Control in New Hampshire and throughout New England.

His diverse portfolio of projects includes large-scale, multifaceted transportation projects requiring the oversight of numerous consultants, contractors, and concurrent tasks on fast-track schedules. He has overseen teams of design and construction engineering and inspectors and has managed several on-call design contracts with the New Hampshire Department of Transportation (NHDOT). Mr. Ashford possesses strong leadership and management skills needed for budgeting, scheduling, and implementation. He develops and maintains client relationships to achieve and exceed the goals and expectations of the client with project deliverables. Mr. Ashford joined Kleinfelder in January 2022 as a Senior Project Manager and QA/QC Manager.

SELECT PROJECT EXPERIENCE:

- Henry Law Avenue and River Street Reconstruction, City of Dover, NH
- Sand Hill Road Bridge, Town of Newport, NH
- Quality Assurance/Quality Control Assurance, MassDOT
- Statewide Bridge Scour Plans of Action, Statewide, NH
- F.E. Everett Turnpike, Bedford/Merrimack/Nashua, NH
- On-Call Design Contracts, NHDOT, Statewide



Education - MS, Civil Engineering.
University of Maine- Orono, 2000

BS, Civil Engineering. University
of Maine - Orono, 1998

Registrations- Professional
Engineer (PE): NH #14198

Certifications

Local Public Agency Certification,
No. 2183, NHDOT

Local Project Administration,
MaineDOT
OSHA 10

KEITH WOOD, PE

Lead Bridge Engineer - Kleinfelder

Mr. Wood has over 20 years of experience designing and managing transportation infrastructure projects in the Northeast. As Lead Bridge Engineer and Project Manager, Mr. Wood has guided projects from preliminary design through final design and PS&E. He has also provided construction oversight and construction engineering services for major bridge projects. His breadth of experience with bridge design includes short, medium, and long, simple, and multi-span bridge rehabilitation and replacement projects, which includes full replacements, deck replacements, wearing surface replacements, and rehabilitations. He has also completed bridge evaluation studies, bridge load ratings, multi-use trail, pedestrian bridges, and highway reconstruction projects. Mr. Wood provided preliminary and final design for the Whittier Street Bridge replacement in Dover, a NH Municipally Managed Bridge Aid Program project.

SELECT PROJECT EXPERIENCE:

- NH Route 101 over Pulpit Brook, NHDOT, Bedford, NH
- Oak St. & Sand Hill Bridge Replacements, Town of Newport, NH
- Whittier Street Bridge Replacement, City of Dover, NH
- Main Street Bridge Replacement, City of Keene, NH
- Brewer Riverwalk Trail, MaineDOT, Brewer, ME
- Bridge Load Ratings, MaineDOT, Statewide



RAFIC KHALIL, PE

QA/QC Manager/Sr. Bridge Engineer - Kleinfelder

Mr. Khalil has over thirty years of diversified structural engineering and project management experience focusing on bridge and transportation projects in design, rehabilitation, and rating of basic to complex steel, concrete and timber bridges, including historic bridges and concrete and masonry arches. Mr. Khalil's experience includes management and design of various Transportation, Infrastructure, Environmental, Water/Wastewater, Parks, and Site projects and structures including construction administration services, for municipal, private, public, and state clients. He has worked on numerous bridge projects for municipal clients in MA, where he served as project manager and engineer coordinating multidisciplinary teams and public outreach, Mr. Khalil served as the project manager and lead bridge engineer for the rehabilitation of a historic three-span concrete arch bridge in Cambridge, MA. This multi-disciplinary project included final design and PS&E along with traffic engineering, hydraulics, environmental permitting, cultural resources compliance, and extensive public stakeholder involvement.

SELECT PROJECT EXPERIENCE:

- Anderson Memorial Bridge Rehabilitation, MassDOT, Cambridge, MA
- Vine Brook Accessway Timber Bridge, Town of Burlington, MA
- Palmer Road Bridge Replacement, MassDOT, Ware, MA
- Pierce Crossing Road Bridge Replacement, Town of Jaffrey, NH
- Union Station Intermodal Transportation Center Rehabilitation, Worcester, MA

Education - MS, Civil Engineering.
University of Massachusetts -
Lowell, 1985

BS, Civil Engineering. Merrimack
College, 1982

Registrations- Professional
Engineer (PE): NH #10725

Professional Affiliations
American Society of Civil
Engineers, NH Chapter



AMY FLOREN, PE

Sr. Bridge Engineer/Project Manager - Kleinfelder

Ms. Floren is a Senior Bridge Engineer with 27 years of experience. Her background includes the design, inspection, and ratings of bridges in Maine, New Jersey, West Virginia, Illinois, Georgia and Utah. She has been involved in all project aspects including inspection, construction, load ratings, and design of pedestrian, trail, rail, and highway transportation bridge projects. Ms. Floren has designed externally post-tensioned strengthening of existing steel girders for a fracture-critical bridge in Maine, as well as internally post-tensioned pier caps for bridges in several states. She provided quality control of prestressed concrete beam bridge plans and calculations ensuring the release of plans on schedule for design-build and accelerated bridge construction projects in Utah. Ms. Floren has volunteered with Bridges to Prosperity on the construction of footbridges in Peru and East Timor and is currently assisting the organization Engineers in Action university teams' footbridge design projects in Bolivia.

SELECT PROJECT EXPERIENCE:

- Mill Hill Bridge, MaineDOT, Deer-Isle Stonington, ME
- Route 7 over Des Plaines River, Lockport, IL
- York River Bridge, Maine Turnpike Authority, York, ME
- Androscoggin River Overpass, Maine Turnpike Authority, Auburn-Lewiston, ME

Education - MS, Civil Engineering.
Illinois Institute of Technology,
Chicago, IL 1999

BS, Civil Engineering. State
University of New York, Buffalo,
NY 1994

Registrations- Professional
Engineer (PE): NH #15142

Certifications - Safety Inspection of
In-Service Bridges, NBIS

Education - BS, Civil Engineering.
University of Maine - Orono

Registrations- Professional
Engineer (PE): NH #15666

Professional Engineer (PE): ME
#9244

Certifications

Local Public Agency Certification,
No. 2008, NHDOT
Local Project Administration,
MaineDOT



DON ETTINGER, PE

Principal/Project Manager - Gorrill Palmer

Mr. Ettinger is the Principal/Project Manager at Gorrill Palmer and leads the firm's Transportation Engineering Group. He has over twenty-seven years of experience in transportation engineering. His experience includes planning and design for roadways, intersections, pedestrian and bicycle facilities, rail, transit, and bridge projects. He has first-hand knowledge of project development processes and procedures, having served as a project manager for many public and private sector projects. In addition to working directly with state transportation agencies, Don is experienced in MaineDOT Local Project Administration (LPA) and works with several municipalities in Maine on state and municipal transportation projects.

SELECT PROJECT EXPERIENCE:

- Route 4/17 Reconstruction, Jay, ME
- Franklin Street Corridor Study & PDR, Portland, ME
- Memorial Traffic Circle Improvements (LPA), Kittery, ME
- Hampshire Street Reconstruction, Auburn, ME
- Somerset Street Restoration (LPA), Portland, ME
- Route 35 Sidewalk Improvements (LPA), Windham, ME
- Broadway Corridor & Intersection Improvements (LPA), Bangor, ME
- Hotel Road Improvements (LPA), Auburn, ME

Education - BS, Civil Engineering.
University of Maine - Orono

Registrations- Professional
Engineer (PE): NH #14676

Professional Engineer (PE): ME
#8686

Certifications

Local Public Agency
Certification, No. 1226, NHDOT
Local Project Administration,
MaineDOT



RANDY DUNTON, PE, PTOE

Project Manager/Sr. Traffic Engineer - Gorrill Palmer

Mr. Dunton, Project Manager/Sr. Traffic Engineer, is a partner at Gorrill Palmer and manages the Transportation Planning Group. He has over twenty-seven years of experience in traffic and transportation engineering. He has worked for both the private sector as well as with the Maine Department of Transportation as the Region Traffic Engineer for the southern region of Maine. His design and project management experience designs, feasibility studies, traffic calming design, safety evaluations and analysis, traffic modelling and analysis, peer reviews. Mr. Dunton is a licensed PE in both NH and ME, a certified Professional Traffic Operations Engineer (PTOE), and has numerous IMSA Certifications.

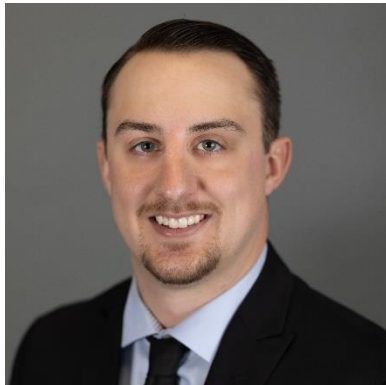
SELECT PROJECT EXPERIENCE:

- Route 236 Corridor Study, Kittery/Elliot, ME
- Waterville Downtown Study, Waterville, ME
- Stillwater Avenue Corridor Study, Old Town, ME
- Broadway Corridor and Intersection Improvements (LPA), Bangor, ME
- Washington Avenue Intersection Improvements, Portland, ME
- Broadway Improvements, South Portland, ME
- Franklin Street Corridor Study & PDR, Portland, ME

Education - BS, Civil Engineering.
University of Maine - Orono

Registrations- Professional
Engineer (PE): ME #16113

Certifications
Local Project Administration,
MaineDOT



JARED WINCHENBACH, PE

Project Manager/Sr. Highway Engineer - Gorrill Palmer

Mr. Winchenbach is a Project Manager/Sr. Highway Engineer at Gorrill Palmer within the firm's Transportation Engineering Group. He has over six years of experience in transportation engineering design, drafting and plan production. His project experience includes roadway reconstruction, rehabilitation, downtown planning studies, pedestrian and bicycle facilities, intersection geometric and safety improvements, traffic calming and traffic signal upgrades. He has managed design efforts for projects of varying size and scope and is well versed with the project development process for highway, multimodal and traffic projects. Mr. Winchenbach is also experienced with utility and environmental coordination. Since joining Gorrill Palmer, Mr. Winchenbach has participated in numerous MaineDOT Local Project Administration (LPA) projects with several Maine municipalities.

SELECT PROJECT EXPERIENCE:

- Recreation Trail, The Forks, ME
- Oak Grove and Judkin Ave Sidewalk Improvements (LPA), Bath, ME
- Hampshire Street Reconstruction, Auburn, ME
- Somerset Street Restoration (LPA), Portland, ME
- Route 109 (Main Street) Sidewalk Construction with HMA Overlay, Sanford, ME
- Cedar Street Parking and Sidewalk Improvements (LPA), Brunswick, ME
- Hotel Road Improvements (LPA), Auburn, ME



Education - BS, Civil
Engineering. University of
Maine - Orono

Registrations- Professional
Engineer (PE): ME #13726

Certifications
Local Project Administration,
MaineDOT

BRANDON HAVU, PE

Project Manager/Sr. Highway Engineer – Gorrill Palmer

Mr. Havu is a Project Manager at Gorrill Palmer and a leader within the firm's Transportation Group. His project experience includes roadway reconstruction, rehabilitation, restoration, intersection geometric and safety improvements, roundabout/traffic circle layout and performance checks, pedestrian and bicycle facilities, and traffic signal upgrades. His experience covers the full range of corridor priorities and roadway classifications, ranging from interstate highways/interchanges to low-volume local roadways and intersections. Through his diverse project background, he has developed a great understanding of the project development process, design standards, policies and procedures.

SELECT PROJECT EXPERIENCE:

- Route 1 Reconstruction, East Machias, ME
- Memorial Traffic Circle Improvements, Kittery, ME
- Civic Center Drive Improvements, Augusta, ME
- Route 17 / Route 32 Intersection Improvements, Windsor, ME
- Webster Ave Bridge Replacement, Bangor, ME
- Forest Ave & I-295 Ramo Improvements, Portland, ME

APPENDIX - PROJECTS

Replacement of Oak Street Bridge over the Sugar River, Newport, NH



Client: Town of Newport, NH

Services Provided: Bridge Design • Roadway Design • Hydrology and Hydraulics Analysis • Drainage Design & Stormwater Management • Subsurface Investigation & Geotechnical Engineering • Utility Coordination & Relocation • Public Involvement • Right-of-Way Assistance • Environmental Permitting • Cultural Resources • Contract Document Development • Bidding Assistance • Construction Administration and Observation

Kleinfelder provided design and construction phase engineering services for the replacement of a 1937 historic truss bridge. This project included federal funding through the Federal Municipal Off System Bridge Program (MOBRR). The Kleinfelder bridge team presented the Town with three alternatives for rehabilitation of the existing truss and two complete replacement alternatives and after a number of public meetings, Section 106 historic consultation, the proposed solution was a replacement with a new 118' clear span steel girder bridge with composite reinforced concrete deck on new concrete abutments.

Advantages:

- New structure with 75 year minimum design life
- Meets minimum hydraulic opening requirements
- Improvement NHDES Stream Crossing Guideline compliance
- Improved site distance
- Very low maintenance and life cycle costs

The Kleinfelder team worked diligently with NHDHR, NHDOT, FHWA, the Town, and other project stakeholders to expedite the Section 106 historic consultation process and the environmental process to gain the necessary support and approvals for NEPA compliance so that the project proceeded to final design and was ready for advertisement in early 2018. As part of the final design effort Kleinfelder secured the necessary permits from NHDES and worked with the Town to obtain the easements and utility relocations prior to advertising the project. This bridge aid project was federally funded and therefore required near full-time construction observation and increased construction administration efforts by the Kleinfelder team.

Replacement of Peaslee Road Bridge over Piscataquog River, Weare, NH



Client: Town of Weare, NH

Services Provided: Bridge Design • Roadway Design • Hydrology and Hydraulics Analysis • Drainage Design & Stormwater Management • Subsurface Investigation & Geotechnical Engineering • Utility Coordination & Relocation • Public Involvement • Right-of-Way Assistance • Environmental Permitting • Cultural Resources • Contract Document Development • Bidding Assistance • Construction Administration and Observation

Kleinfelder provided complete design and construction phase services for the replacement of the Peaslee Road Bridge for the Town of Weare as part of the NH State Bridge Aid Program. The completed bridge is a 96' single-span weathering steel plate girder structure with a composite concrete deck with new concrete abutments and wingwalls supported on spread footings. The original structure was a historic one-lane steel girder structure with a single span of about 61'. Flooding had caused erosion damage to the roadway approaches and cut off access for the property owners on the east side of the river until the water subsided and repairs were completed. To reduce flood risks, the new structure was designed to accommodate the 100-year storm event, which required a substantial increase in span as well as a significant raising of the bridge and roadway approaches.

Since this bridge is located on a dead end road, a temporary bridge was used to maintain access to all properties during construction. Kleinfelder worked closely with the Town to obtain easements from those property owners that were affected by the temporary bridge and the widening and realignment of the permanent roadway.

During construction Kleinfelder was instrumental in providing QA for the cast-in-place concrete substructures to ensure durable concrete used by. The final construction cost finished 2.5% under the original bid amount of about \$925,000.

Sand Hill Road Bridge Replacement, Newport, NH



Client: Town of Newport, NH

Services Provided: Bridge Design/ Structural Engineering • Roadway Design • Subsurface Investigation/ Geotechnical Engineering • Hydraulics & Hydrology • Environmental Permitting • Cultural Resources • Contract Development • Bidding Assistance • Construction Phase Engineering

Kleinfelder was the prime consultant for preliminary and final design plans, specifications, and estimate (PS&E) for the bridge replacement project located on Sand Hill Road over Long Pond Brook. The project scope included bridge replacement, widening of the roadway to 22'-0", upgrade of the bridge railing and roadway guardrails. The goal was to match the horizontal alignment to the greatest extent possible while moving the roadway centerline upstream as necessary to minimize impacts to the ditch and stonewall along the downstream side of the north approach.

The proposed structure consists of a 34' span Butted Precast Concrete Deck Beam superstructure founded on a spread footing substructure. This replacement alternative has a slightly higher cost in terms of upfront construction costs, but it has many construction advantages especially under a tight construction schedule (temporary emergency repairs/shoring of the superstructure was done in January of 2021), is lower maintenance with minimal lifecycle costs and have a minimum 75-year service life making it a better long-term solution. To expedite construction, the road was closed during construction and traffic was detoured on local roads.

Brewer Riverwalk Trail - Phase II, Brewer, ME



Client: MaineDOT

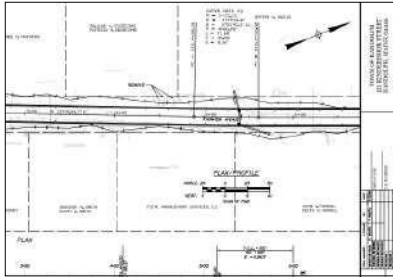
Services Provided: Trail Design • Structural Design • Drainage Design & Stormwater Management • Utility Coordination & Relocation • Public Involvement • Right-of-Way Assistance • Cultural Resources • Contract Document Development • Bidding Assistance • Construction Inspection

Kleinfelder provided preliminary and final design and cultural resources compliance for the Riverwalk Trail Phase II project, located along the Penobscot River in Brewer. Kleinfelder worked closely with MaineDOT and Brewer's City Engineer and Planner to finalize plans and design a safe and creative alternative that avoided crossing the heavily travelled intersection of Main and Wilson Streets. Kleinfelder designed a tunnel through the curtain wall of the abutment of the Joshua Chamberlain Bridge and maintained the trail along the river front to avoid this busy intersection. Kleinfelder oversaw right-of-way mapping, geotechnical engineering and electrical design for the trail lighting, security system, and public Wi-Fi.

The design also avoided impacts to Brewer's Veterans Park and eliminated a costly trail switchback structure. The design at this location also improved a large apartment complex parking area by locating the trail to the westerly border of the property. A new retaining wall replaced a deteriorated one and provided the trail with greater width and a green esplanade along the street. Through the redesign of sidewalks, improved parking, lighting replacement, and improved business access as part of the trail design, the Center Street downtown area is now a more inviting area for existing and new businesses. Safety improvements were made by updating all the crossings to gain access downtown and provide ADA access. Finally, Kleinfelder worked closely with the City of Brewer to provide low cost, but attractive, landscaping with cedar post fencing and hardy drought resistant plants.

This project received a 2019-2020 Engineering Excellence Award from the American Council of Engineering Companies of Maine for Engineering for Civic Value.

Road Reconstruction, Fairview and Belmont Avenues, Randolph, ME



Client: Town of Randolph, ME

Kleinfelder is providing the Town of Randolph with design, environmental, and construction administration services for the reconstruction of two residential roads. Fairview Avenue will include 1,650' of reconstruction and Belmont Avenue 2,750' of reconstruction. Design services include preliminary and final design through to PS&E and bid documents for road reconstruction, sidewalk reconstruction, and closed drainage. Our team will work closely together to minimize potential impacts to nearby wetlands and streams. *Services Provided: Highway Engineering • Drainage Design & Stormwater Management • Utility Coordination • Public Involvement • Right-of-Way Assistance • Environmental Permitting • Contract Document Development • Bidding Assistance • Construction Inspection*

Castle Hill Road Arch Culvert Replacement, Windham, NH



Client: Town of Windham, NH

Kleinfelder has provided the Town of Windham with preliminary and final design and will be providing construction phase services for the replacement of the CMP culvert with concrete headwalls on Castle Hill Road over the East Channel of Beaver Brook. This NHDOT Municipal Bridge Aid Project will result in the replacement of the CMP culvert with a 24' rigid frame bridge. The project included coordination with state and local environmental regulations. *Services Provided: Bridge Design • Roadway Design • Hydrology and Hydraulics Analysis • Drainage Design & Stormwater Management • Geotechnical Engineering • Public Involvement • Right-of-Way Assistance • Environmental Permitting • Cultural Resources • Contract Document Development • Bidding Assistance • Construction Administration and Observation*

East Main Street Highway Improvements, Bradford, NH



Client: Town of Bradford, NH

Services Provided: Roadway Design • Drainage Design & Stormwater Management • Utility Coordination • Public Involvement • Right-of-Way Assistance • Environmental Permitting • Cultural Resources • Contract Document Development • Bidding Assistance • Construction Administration and Observation

Kleinfelder was the prime consultant for design of this highway improvement project, leading preliminary and final design and environmental compliance and construction phase services. The scope of work included improvements to 1,700' of roadway on East Main Street in the Town's central district and intersections with Route 114 and Route 103.

Kleinfelder's design provided a consistent roadway and ADA compliant sidewalks and improved roadway geometry with no land takings or permanent easements. The addition of sidewalks and paved shoulders provided new alternatives for non-motorized transportation and improved access and safety. The roadway profile and cross slopes were developed through an iterative process that reduced the overall construction impact and reduced the volume of earthwork. The project area included several National Register-eligible properties, which required additional consultation to avoid impacts while maintaining the project budget. The project was funded with Transportation Enhancement (TE) funds, a precursor to the TAP program. Kleinfelder provided full-time construction inspection and acted as a stakeholder liaison and coordinated directly with local business owners and abutters to resolve any issues affecting their properties.

Franklin Street Corridor Improvements, Portland, ME



Client: MaineDOT and City of Portland

Gorrill Palmer provided a corridor planning study and preliminary (25%) design development for the Complete Street's transformation of the Franklin Street arterial in Portland. This design provides a better balance by serving all modes of transportation. Design included geometric improvements for several major/minor intersections (including a single lane roundabout), I-295 ramp modifications, sidewalk and ADA accommodations, bicycle lanes/multi-use pathways, and other related roadway features.

Services Provided: Roadway Design/Engineering • Transportation Planning • Traffic Research/Engineering • Intersection Design/Engineering, Roundabout Layout • Multimodal Design/Engineering • Public Involvement Process

Route 4/17 Highway Reconstruction, Jay, ME

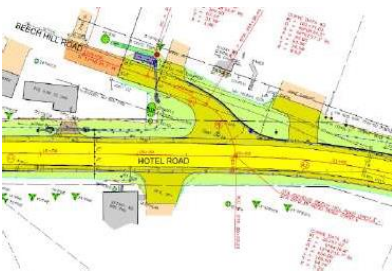


Client: MaineDOT

Gorrill Palmer provided Preliminary and Final Design development for 1.25 miles of highway reconstruction on Route 4/17 in Jay. This design includes roadway alignments, super elevation, intersection reconfiguration and improvements, sidewalks and ADA improvements, open and closed drainage, guardrail/roadside safety, signing and striping, entrances and other related highway features. This project also included design of retaining walls along the roadway and adjacent entrances.

Services Provided: Roadway Design/Engineering • Intersection Design/Engineering • Multimodal Design/Engineering • Geotechnical Design & Coordination • Public Involvement Process

Hotel Road Improvements, Auburn, ME



Client: City of Auburn

Gorrill Palmer is currently providing Preliminary and Final Design for this MaineDOT LPA project on Hotel Road in Auburn. This roadway improvement design includes roadway and intersection alignments, super elevation, open and closed drainage, entrances, and other related roadway features. This project also includes environmental coordination/permitting and utility coordination.

Services Provided: Roadway Design/Engineering • Intersection Design/Engineering • Multimodal Design/Engineering • Local Project Administration • Environmental Coordination/Permitting • Public Involvement Process

Recreation Trail, The Forks & West Forks, ME



Client: MaineDOT

Gorrill Palmer provided design services for approximately 6 miles of recreational trail in the Forks and West Forks. This trail generally runs parallel and adjacent to the Kennebec River in the Forks and along the Dead River in West Forks, providing a great biking and walking experience in one of the most scenic locations in Maine. Services provided include multi-use path design, drainage design, and parking facility design.

Services Provided: Trail Design • Multi-Use Path Design • Multimodal Design/Engineering • Drainage Design • Parking Facility Design

Memorial Traffic Circle Improvements, Kittery, ME



Client: Town of Kittery

Gorrill Palmer provided Preliminary and Final design development for this operational and safety improvements project at the Memorial Traffic Circle in Kittery. Following the MaineDOT LPA process, this design included reconfiguration and alignment of approach roadways and splitter islands, truck aprons, bicycle lanes and multi-use pathway, open and closed drainage, access management, signing and striping, entrances and other related roadway features.

Services Provided: Roadway Design/Engineering • Intersection Design/Engineering • Roundabout/Traffic Circle Design • Multimodal Design/Engineering • Local Project Administration • Public Involvement Process • Right of Way Mapping

Hampshire Street Improvements, Auburn, Maine



Client: City of Auburn

Gorrill Palmer provided Preliminary and Final Design services for the reconstruction of Hampshire Street in Auburn. This reconstruction project featured a Complete Streets transformation of the Hampshire Street corridor, providing improvements to the roadway structure and travel lanes while also implementing curb extensions, on-street parking and sidewalks along both sides of the road. This project also included transit accommodations, lighting, landscaping, utility coordination and Right-of-Way mapping.

Services Provided: Roadway Design/Engineering • Intersection Design/Engineering • Multimodal Design/Engineering • Traffic Analysis • Transit Accommodations • Utility Coordination • Public Involvement Process

Webster Avenue Multi-Use Path, Bangor, ME



Client: MaineDOT

Gorrill Palmer provided Preliminary and Final design services associated with the roadway, multi-trail and, utility improvements associated with this bridge replacement project in Bangor. Services provided include roadway improvements to I-395, trail improvements to Webster Avenue, and replacement of the existing sewer main within the project limits. Gorrill Palmer provided additional design efforts for the development of detour plans for I-395, I-95, and other approach roadways to facilitate shutdown of I-395 during construction.

Services Provided: Roadway Design/Engineering • Trail Design • Multi-Use Path Design • Interstate Design • Traffic Control & Detour Design • Utility Design