

*Letter of Interest for*

Statewide On-Call Construction  
Engineering and Inspection Services  
Prequalified List of Consultants for  
Locally Administered Local Public  
Agency (LPA)

Qualifications-Based Selection  
Contracts

*Prepared for NHDOT*





**Table of Contents**

1. INTRODUCTION LETTER.....2

2. PROJECT UNDERSTANDING AND APPROACH.....1

3. ORGANIZATIONAL CHART.....3

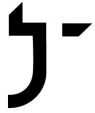
4. PROJECT TEAM .....4

5. REFERENCES.....6

APPENDIX A - RESUMES.....7

APPENDIX B: APPLICABLE WORK EXPERIENCE ..... 12



## 1. INTRODUCTION LETTER

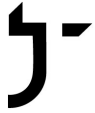
**John Turner Consulting, Inc. (JTC)** is pleased to submit this letter of interest to provide statewide on-call construction engineering and inspection services for locally administered projects. These services are the core of what JTC was founded upon and we look forward to providing NHDOT with our expertise for this contract. Our expert technical staff are efficient, responsive, and equipped with local knowledge. Our understanding and experience with pavements, roads, sidewalks, culverts, bridge reconstructions, and other related project scopes give us extremely specific knowledge of the materials involved and the specifications governing their application. We deliver comprehensive quality assurance and quality control services to state agencies, municipalities, engineers, and contractors. JTC's first contracted project in 1997 was for the resident inspection of a 1-million-gallon concrete water storage tank in Tilton, NH. Since then, our staff have served as resident inspectors for thousands of projects throughout New England. ***We currently have 11 NHDOT LPAs on staff, with 4 additional scheduled for LPA training this spring. 6 of our NHDOT LPA staff also have the Office of Federal Compliance (OFC) LPA Labor Compliance Certification.***

***Construction Engineering and Inspection Expertise:*** The depth of our construction and engineering experience will provide a distinct benefit to NHDOT and local municipalities. JTC has performed Construction Engineering and Inspection Services (CE&I) under several state DOT, public works, and private contracts. Through this experience, our CE&I team has gained an excellent understanding of project requirements and a depth of experience in responding to them. Our team is proficient at a multitude of tasks and can effectively plan for flexible workloads and scheduling requirements. ***JTC currently has an NHDOT statewide on-call \$1.95M contract for CE&I services for highway and bridge construction projects.*** JTC has been providing similar services to MaineDOT since 2010 and has continuously renewed our contracts with expanded roles. Our current contract runs through 2029.

***Qualified Staff:*** JTC employs over 120 professionals and is actively recruiting qualified candidates to meet the demands of each year's construction season. ***We have over fifty professional construction inspectors with diverse experience in civil and construction engineering projects such as roadway, bridge, aviation, geotechnical, quality assurance, construction materials testing and monitoring, schedule/claims analysis, community outreach, constructability reviews, project scheduling, and environmental permitting.*** They have backgrounds and training in geotechnical inspection and testing, bringing with them a familiarity with soils, mitigation methods for unique soil conditions, and resolutions for drainage issues. Our resident engineers have diverse experience on project scopes ranging from large bridge, HMA paving, and road construction to utility installation including sewer, water, and drainage. Our environmental and geotechnical engineering groups complement and support our CE&I staff. This team has multi-disciplined project experience in environmental due diligence, property acquisition/divestment assessments, industrial hygiene and hazardous building materials, subsurface explorations, geo-environmental site evaluation, risk assessment, remediation, design of excavation support systems, and all aspects of geotechnical engineering and investigations.

***Experience with On-Call Term Contracts.*** ***JTC has held multiple on-call, multi-year contracts for government agencies including current contracts with NHDOT, NHDES, USNH, MaineDOT, Massachusetts Port Authority; MassDOT; CTDOT; RIDOT; and VTrans.*** In March of 2020, JTC renewed our \$1.9M contract to provide Construction Inspection services to Vermont municipalities on ***locally managed projects*** for up to 5 years. We have also been awarded Construction Inspection Oversight multi-year term contracts with Laconia and Lebanon, NH; Augusta, Brewer; Lewiston, Lebanon, and Portland, ME; Gloucester, MA; Providence and Westerly, RI. We have developed a fine-tuned process for handling task orders. When a work request comes in, we assess the scope, gather appropriate members of our team, develop a budget proposal, and submit it to our client for their review. This approach has worked successfully on our term contracts for many years. JTC has provided professional services for more than 1,500 state and federally funded projects throughout New England.

**John D. Turner, President** | [john@consultjtc.com](mailto:john@consultjtc.com) | Cell: 603-234-0850  
**JOHN TURNER CONSULTING, INC.** 44 Lafayette Road, Suite 6 |  
PO Box 953 | North Hampton, NH 03862



## 2. PROJECT UNDERSTANDING AND APPROACH

JTC maintains a proven history of providing quality Construction Engineering and Inspection Services on a wide variety of project scopes for federal, state, local, and private clients throughout the northeast. We bring a unique approach to each project, while always maintaining our strong core values. JTC works to create and maintain a team atmosphere through effective communication with all parties, ensure quality construction in accordance with plans and specifications, implement effective cost control measures, and produce high quality records and documentation per federal and state requirements on every project we are involved with.

In addition to ensuring that projects are constructed in accordance with contract documents and that proper cost control measures are in place, our staff has experience with effectively monitoring and evaluating contractor and subcontractor qualifications to work on federally funded projects, including Buy America requirements and documentation, DBE status of subcontractors and project utilization, Davis-Bacon Act compliance of employee classifications and wage rates, review of certified payroll documentation, conducting employee interviews to verify payroll documentation, and compliance with the employee rights bulletin board information as required on federally funded projects. JTC staff is familiar with maintaining documentation under the *Responsibilities Guide for Sponsor/Consultants for Federally Funded Projects* as published by NHDOT. JTC has provided services for many LPA projects under our MAB contract as well as for local Municipalities in NH and Maine. We are very familiar with the requirements of the NHDOT LPA Program.

With our current staff of 11 NHDOT LPA certified inspectors complementing our significant depth of qualified personnel, JTC brings extensive experience and knowledge of the requirements for project oversight and documentation for projects with federal, state, local, and/or a combination of sources funding the project. The proposed project team is as familiar with the administrative requirements governing construction contracts from all of the potential funding sources as they are with relevant construction methods and technical specifications required for a successful project. Most important among the administrative functions is financial management integrated with proper and complete documentation. Our financial management approach includes working on the Owner's behalf to manage, track, and verify the financial transactions during construction and coupled with appropriate quantity documentation. Elements of this responsibility start with verifying and recording construction quantities installed and stored on-site, independently validating the Contractor's pay requests, and verifying that each item complies with requirements of the material certifications, contract documents, submittals, and installation methods and conditions.

Our proposed JTC staff have the knowledge and expertise to properly monitor site conditions, verify dig-safe prior to underground work, prepare daily reports, document site activities, track project quantities and verify materials, ensure compliance with site safety procedures and environmental controls. Our Construction Engineering and Inspection team will continuously verify that quality construction and compliance are achieved by the contractor and subcontractors throughout the project. Any deviations from permits, contract documents or state and federal requirements will be immediately reported, both verbally and in writing, so that the project can be guided back into compliance or so that acceptable changes can be developed and approved. JTC will inspect the staging area(s) and the material storage locations for compliance with applicable standards and monitor erosion control on an ongoing basis to assure that it complies with the project permits. Our Resident Engineers and Construction Inspectors have many years of experience with project management and regulatory compliance. All federal, state, and local permits are reviewed to maintain a high level of regulatory compliance onsite including erosion and sediment control, stormwater management, and OSHA regulations. JTC ensures all private property and easement agreements are maintained and respected during construction. JTC reviews all safety methods and activities by the Contractor to maintain a safe work environment for both the public and the workers onsite. All traffic control and erosion control methods/operations will be carefully noted, and any safety or environmental issues will be immediately brought to the attention of all parties.

JTC staff are prepared to review all final calculations and all other pertinent documents so that a Certificate of Completion can be issued. We have experience certifying to NHDOT and other funding sources that the project





was constructed as designed, in conformance with drawings and specifications, subject to appropriate revisions during construction. Prior to completion of each project, we are accustomed to preparing a final inspection checklist or “punch list” following a thorough onsite inspection to help guide the contractor toward substantial and final completion. JTC monitors and updates the punch list until all unsatisfactory items are complete. Our team is experienced in ensuring that all close-out documentation and as-built drawings are correct and properly turned over, as well as aiding in the development of a digital plan set.

In addition to our extensive depth of Construction Engineering and Inspection staff including our NHDOT LPA-certified team members, **JTC has 3 Professional Engineers licensed in the State of New Hampshire, with an additional one in the process of receiving reciprocity.** Their diverse project experience, primarily in Geotechnical Engineering, is a resource that complements our Construction Engineering and Inspection efforts, Materials Testing services, and Environmental group.

Our Environmental Engineering team offer our clients a fully integrated delivery system of consulting services in support of all facets of development and redevelopment projects throughout the Northeast, undertaken by public and private, commercial, residential, institutional, and transportation-related clients. The range of our support includes but is not limited to:

- Air and Dust Monitoring
- Conceptual Site Model/Design
- Construction Dewatering
- Environmental Assessment and Closure
- UST/AST Compliance
- Environmental Site Assessments
- Environmental Remediation Construction
- Property Due Diligence
- Federal and State Regulatory Compliance
- Geo-Environmental Analyses
- Remediation QA/QC Observation
- Risk Assessment
- Remedial Feasibility/Design
- Soil Management Programs & Disposal

Our proposed team of construction engineering and inspection professionals have an unmatched depth of experience and knowledge managing the interests of the owner in the construction phase of projects from all funding sources. Our ability to pull from our diverse network of experienced staff ensures that projects meet the applicable expectations and requirements. Our effective communication ensures that the municipalities we represent are informed and the project proceeds with their interests as a top priority. Included in our experience is a solid understanding and demonstrated success of implementing and preparing documentation that meets the requirements of federal or state funded projects. We have a history of being the most reliable and available resource for municipalities and are a unique entity, with our company focus on construction engineering and inspection and the services to support those efforts in contrast to our competitors who offer CE&I services on the side. Our subcontractors, Daniel Moss, P.E. and Scott Williamson, P.E, CPESC, CESSQWI are also New Hampshire registered P.E.s

JTC personnel have been involved in many federally funded transportation construction projects in New Hampshire and throughout New England. These projects have followed all required federal aid construction contract requirements such as non-discrimination, Davis Bacon Provisions, construction safety standards, implementation of the Federal Clean Water Act, equal opportunity regulations, fair wage verification requirements, and federal highway standards.

Our proposed project team has a strong working knowledge of federal regulations involved in projects that affect design, permitting, environmental impact, row, and construction. JTC feels that one of our true strengths is that we are large enough to have the staff, experience, knowledge, and resources to provide effective and efficient professional services but small enough with a local philosophy so that each of our clients is treated with the attention and care they deserve because we truly value these relationships.

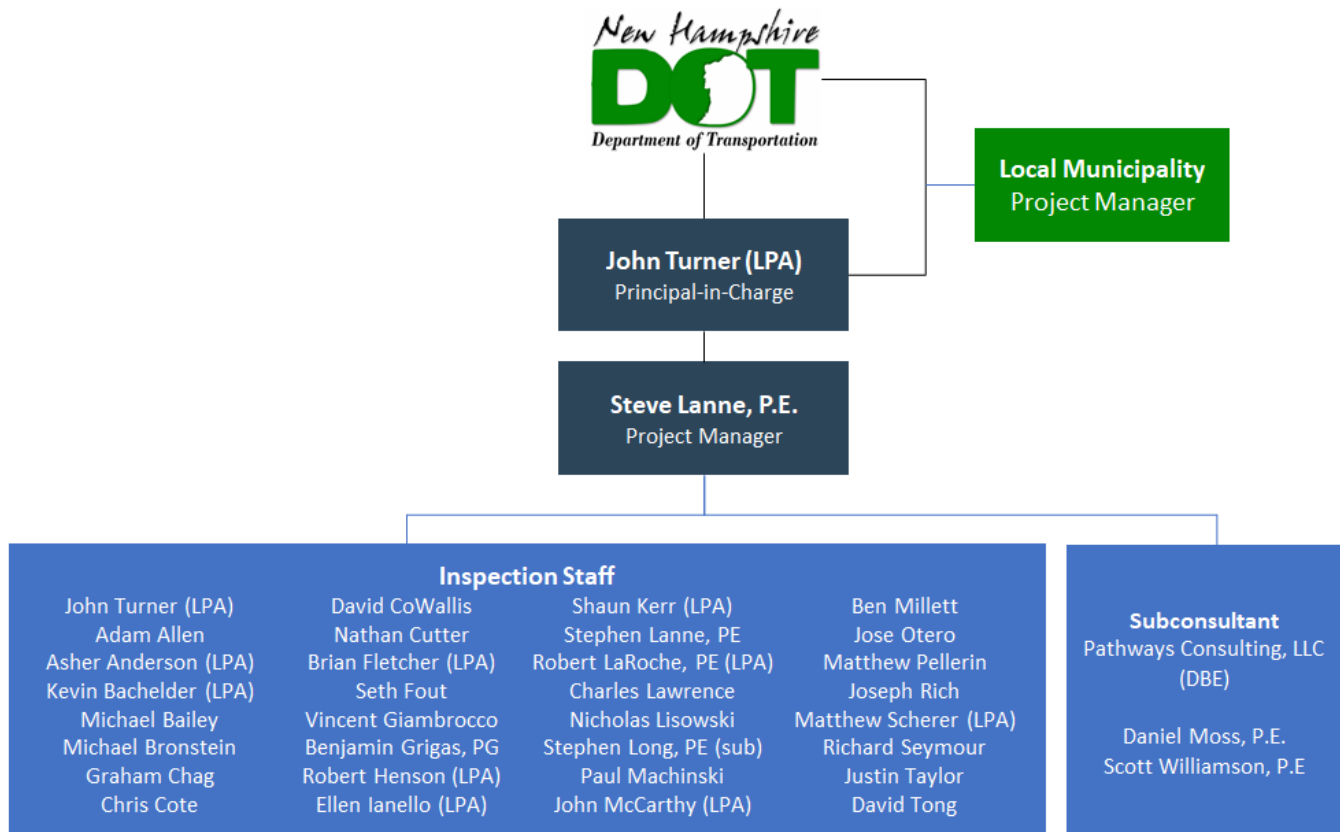
We are committed to being the premier resource for construction engineering and inspection services in the region and look forward to continuing to bring that energy to projects in the municipalities across the state and their project funding sources.



### 3. ORGANIZATIONAL CHART

The primary point of contact for the local municipality and NHDOT for contract negotiations will be our Principal-in-Charge, John Turner. Project specific communication with each local municipality and NHDOT including personnel assignment and management, project documentation transmission and maintenance, and all other high level project responsibilities and communication will be through our Project Manager, Steve Lanne, PE. Steve will be dedicated to these contracts with a focus on responsiveness and timely communication.

Our extensive staff resources for Inspectors and Resident Engineers will bring our Project Manager the most accurate and relevant information available to review and provide the municipality and NHDOT. Our Resident Engineer will provide day-to-day oversight of the project. The Resident Engineer will be responsible for maintaining all project documentation including daily inspection reports, submittal logs, pay item tracking, certified payrolls, payroll log sheets, etc. If a project requires field staff beyond the Resident Engineer, the Resident Engineer will manage and be directly responsible for the team of inspectors that work on the project and the documentation that they create.



**JTC's staff is flexible and works whatever hours are dictated by the contractor's schedule.** Our staff is prepared to work nights and weekends when the need arises. This is what they do. They are used to contractors' schedules changing at the last minute. We shuffle and adapt. Our proposed staff members are not design engineers who alternate between office work and field activities. Rather, they are dedicated field personnel who possess excellent adaptability skills to meet changing needs.

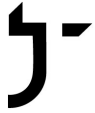
JTC personnel have been involved in many federally funded transportation construction projects in New Hampshire and throughout New England. These projects have followed all required federal aid construction contract requirements such as non-discrimination, Davis Bacon Provisions, construction safety standards, implementation of the Federal Clean Water Act, equal opportunity regulations, fair wage verification requirements, and federal highway standards.



**4. PROJECT TEAM**

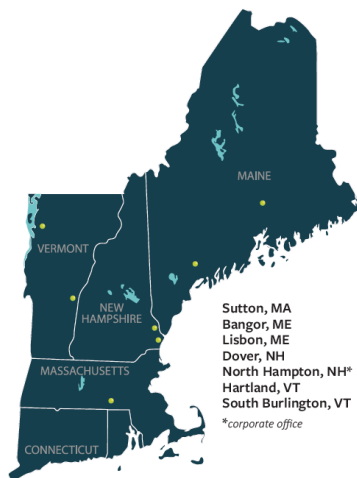
The following is our team member classification table.

CONSTRUCTION ENGINEERING AND INSPECTION SERVICES IN SUPPORT OF LPA PROJECTS		YEARS OF EXPERIENCE	YEARS WITH FIRM	TECHNICIAN INSPECTOR - LEVEL I	TECHNICIAN INSPECTOR - LEVEL II	TECHNICIAN INSPECTOR - LEVEL III	ENGINEER INSPECTOR - LEVEL I	ENGINEER INSPECTOR - LEVEL II	ENGINEER INSPECTOR - LEVEL III	PROJECT MANAGER/CEOR	ENVIRONMENTAL INSPECTOR	NH LICENSED PROF. ENGINEER	CESSWI CERTIFIED	CPESC CERTIFIED	NETTCP CERTIFIED	LPA CERTIFIED
Key Personnel	Project Role															
John Turner	Principal-in-Charge	32	26					X			X				X	X
Adam Allen	Technician Inspector	9	9		X										X	
Asher Anderson	Technician Inspector	13	5		X									X	X	X
Kevin Bachelder	Technician Inspector	14	7			X									X	X
Michael Bronstein	Engineer Inspector	7	5				X				X				X	
Graham Chag	Technician Inspector	5	5	X											X	
Chris Cote	Engineer Inspector	21	11					X							X	
David CoWallis	Engineer Inspector	27	8					X			X				X	
Nathan Cutter	Technician Inspector	17	17			X									X	*
Robert Henson, II	Technician Inspector/ Environmental Inspector	32	21			X					X				X	X
Brian Fletcher	Technician Inspector	19	9			X									X	X
Seth Fout	Technician Inspector	8	6	X											X	
Vincent Giambrocco	Environmental Inspector	37	4								X					
Benjamin Grigas, PG	Environmental Inspector	23	5								X					
Ellen Ianello	Engineer Inspector/ Environmental Inspector	4	4					X			X					X
Stephen Lanne, PE	Engineer Inspector/ Environmental Inspector	28	5					X			X					
Robert LaRoche, PE	Engineer Inspector	24	6						X		X	X				X
Charles Lawrence	Technician Inspector	31	6			X									X	*
Nicholas Lisowski	Technician Inspector	13	13			X									X	
John McCarthy	Technician Inspector	18	12			X									X	X
Matthew Pellerin	Engineer Inspector/ Environmental Inspector	14	10					X			X					
Joseph Rich	Engineer Inspector/ Environmental Inspector	12	7					X			X				X	



CONSTRUCTION ENGINEERING AND INSPECTION SERVICES IN SUPPORT OF LPA PROJECTS		YEARS OF EXPERIENCE	YEARS WITH FIRM	TECHNICIAN INSPECTOR - LEVEL I	TECHNICIAN INSPECTOR - LEVEL II	TECHNICIAN INSPECTOR - LEVEL III	ENGINEER INSPECTOR - LEVEL I	ENGINEER INSPECTOR - LEVEL II	ENGINEER INSPECTOR - LEVEL III	PROJECT MANAGER/CEOR	ENVIRONMENTAL INSPECTOR	NH LICENSED PROF. ENGINEER	CESSWI CERTIFIED	CPESC CERTIFIED	NETTCP CERTIFIED	LPA CERTIFIED
<b>Michael Bailey</b>	Technician Inspector	3	6	X											X	*
<b>Matthew Scherer</b>	Technician Inspector	19	6			X									X	X
<b>Richard Seymour</b>	Technician Inspector	21	7			X									X	*
<b>Shaun Kerr</b>	Technician Inspector	5	5		X										X	X
<b>Ben Millett</b>	Technician Inspector	8	1			X									X	
<b>Justin Taylor</b>	Technician Inspector	30	2			X									X	
<b>David Tong</b>	Technician Inspector	22	4		X											
<b>Paul Machinski</b>	Technician Inspector	36	3			X										
<b>Jose Otero</b>	Technician Inspector	17	17			X									X	
<b>Daniel Moss</b>	Sub: Pathways, DBE	25	11									X	X	X		
<b>Scott Williamson</b>	Sub: Pathways, DBE	25	16									X				

\*NHDOT LPA certification is scheduled for the spring of 2024



**Geographic Coverage:**

JTC can provide coverage throughout the State with offices in Dover, and North Hampton, NH, South Burlington, and White River Junction, VT as well as an office just south of the border in MA and 2 offices just across the border to the east in Maine. Likewise, JTC has residents who live throughout the state from Londonderry to Chesterfield to Conway to the Seacoast.





## 5. REFERENCES

### **NHDOT: \$1.95M On-Call Construction Engineering and Inspection Services 3-year Contract**

JTC was originally awarded a 3 year, statewide on-call \$1.95M contract for construction engineering and inspection services for highway and bridge construction projects in 2018. This contract was renewed for another three-year extension until 2024, and most recently renewed through 2027.

Our services include inspections, testing, production, hauling, and placement of highway related materials, soil or rock excavations or fill construction, roadway base, subbase, and slope construction, drainage work, utilities, Stormwater Water Pollution Prevention Plan (SWPPP) review and analysis, erosion evaluation and sediment control including Best Management Practices (BMP), bridge and building demolition, paving, resurfacing, pavement repair and rehabilitation, traffic installations and control, retaining walls, soundwalls, sidewalks, and project management.

**Reference:** Dean Wilson, Process Review Engineer | Ph: 603-271-2573 | [dean.wilson@dot.nh.gov](mailto:dean.wilson@dot.nh.gov)

### **Maine LAP – Whipple Road Sidewalk Project WIN 19394.00, Kittery, ME**

JTC provided Resident Engineer Services for the federally funded Whipple Road sidewalk construction project for the Town of Kittery, ME.

JTC Resident Engineer served as the owner's on-site representative on a day-to-day basis during the construction of this project, representing the interests of the Town by documenting and inspecting the materials and workmanship to ensure that they comply with design plans and specifications for the project, as well as state and federal requirements.

We were responsible for working in cooperation with Town officials, the contracted design team, and others, to administer and document the construction of the project.

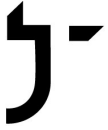
**Reference:** David Rich, Commissioner of Public Works | Ph: 207-439-0333 | [drich@kitteryme.org](mailto:drich@kitteryme.org)

### **Construction Engineering & Inspection, City of Lebanon, NH**

JTC is providing third-party Construction Inspection Services under a 3-year term contract including: provide inspection; record keeping; preparation of reports, participation in construction meetings; calculation and verification of quantities; review of invoices and pay requests; review of traffic control; development of as-built plans; inspection and approval of materials; review and recording of reports for materials and equipment inspection and testing; and, work related to construction inspection.

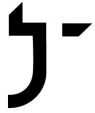
Projects include road and highway reconstruction, bridge and culvert replacement, new utilities, ancillary highway appurtenances, erosion and sediment control, slope stabilization, and drainage improvements.

**Reference:** Brian A. Vincent, PE, City Engineer | Ph: 603-448-3112 x 6252 | [brian.vincent@lebanonnh.gov](mailto:brian.vincent@lebanonnh.gov)



# **APPENDIX A:**

## **Resumes of Key Personnel**



## APPENDIX A - RESUMES

### John D. Turner, Principal-In-Charge – Engineer Inspector Level II / Environmental Inspector

**Education:** B.S., Civil Engineering (concentration: geotechnical), Rensselaer Polytechnic Institute, 1991

**Certifications:** NHDOT LPA; MaineDOT LPA (expired); NETTCP QA Technologist #577

- **NHDOT On-Call CE&I.** Principal-in-Charge of this statewide on-call \$1.95M contract for CE&I services for highway and bridge construction projects.
- **NHDOT Route 16 Bridge Replacement & Reconstruction, Ossipee, NH.** Principal-in-Charge of providing resident engineering oversight services for the federally-funded project Route 16/25 Ossipee Bridge Replacement and Reconstruction/Rehabilitation Contract# 14649.
- **MaineDOT Highway Inspection.** Project Manager for this term contract with the MaineDOT. This work has included the coordination of several levels of highway inspection personnel as well as materials testing services. The work has been throughout the state of Maine.
- **Vermont Agency of Transportation (VTrans).** Since 2012, JTC has consistently renewed its two-year term contract with VTrans to provide precast/prestress concrete plant inspection and testing services. As a result of excellent reviews, JTC's contract was expanded to include HMA Plant Inspections, and further expanded to include soils and concrete field testing, HMA, soils and concrete laboratory testing through 2023.
- **Preble Street Sewer Separation Phase 1, Portland, ME.** Principal-in-Charge of a sewer separation construction project located within Preble Street Extension and Marginal Way.
- **CTDOT Construction Engineering & Inspection.** Principal-in-Charge of prequalified term contract for Roads and Bridges since 2015.
- **Massachusetts Port Authority Construction Inspection/Testing.** Principal-in-Charge of a two-year contract with Massachusetts Port Authority as a consultant to provide construction inspection/testing services on an on-call, as-needed basis.

### Stephen C. Lanne, P.E., Engineer Inspector Level III

**Education:** M.S., Civil Engineering, UMass Lowell; B.S., Civil Engineering, Rensselaer Polytechnic Institute

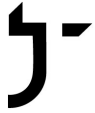
**Licenses:** NH PE. PE in CT, MA, ME, RI, VT.

- **Moses Wheeler Bridge Replacement, Milford – Stratford, CT.** Designed temporary debris enclosures/excavation support for the construction of new bridge piers.
- **Rehabilitation of Cyrus Stage Road Bridge over Potter Brook – Rowe, MA.** Responsible for the completion of a geotechnical investigation and evaluation for the rehabilitation of the existing bridge.
- **Roxbury Street Bridge Replacement, Keene, NH.** Designed a temporary cofferdam and diversion piping a new precast box culvert bridge.
- **Route 9 Railroad Bridge Reconstruction – Brattleboro, VT.** Designed and managed installation of multi-phase temporary excavation support for the construction of new railroad bridge abutments.
- **Rochester Road Bridge Replacement over the Weweantic River – Carver, MA.** Designed multi-phase temporary excavation support for the construction of new bridge abutments.
- **New Britain–Hartford Busway, Hartford, CT.** Provided design of excavation support systems for multiple construction locations across the nearly 9-mile Busway Project Site. The project provided unique challenges including support of active railroad tracks and very soft, varved clay and silt native soils.
- **East Billerica Sewer Extension, Billerica, MA.** Responsible for the design of temporary dewatering wells.

### Asher Anderson, Project Manager / Technician Inspector Level III

**Education:** A.A.S, Architecture & Civil Engineering Technology, Central Maine Community College, 2012

**Certifications:** NETTCP HMA Paving Inspector #3677, CMCI Certified Construction Manager (CCM) #14630, Certified Professional in Erosion and Sediment Control (CPESC), Erosion, Sediment, and Stormwater Inspector (CESSWI), pending, MaineDOT LPA Certified, LPA Certified, NETTCP HMA Paving Inspector #3677 (1/21/26), Certified Radiation Safety Officer (RSO), Nuclear Gauge Safety and Operation #14713, OSHA 30-hour Construction Safety #36-601271859



- **NHDOT and Municipal Projects.** Asher is the Project Manager for multiple DOT and Municipal projects each year, with the majority including federal funding components. This project management experience includes roadway, bridge, municipal infrastructure, sidewalk, and other project scopes and sizes.
- **MaineDOT Class III Paving Inspector/Resident.** Since 2016, Asher has worked on a variety of MaineDOT projects, including serving as the Resident Engineer on a \$4M Plant Mixed Recycled Asphalt Pavement project which included drainage and safety improvements, lakeside bank stabilization, and cross slope adjustments.
- **Downtown Tunnel Rehabilitation, City of Lebanon, NH.** Rehabilitation of the former railroad tunnel and associated trail work, for use by both pedestrians and bicyclists.
- **Water System Interconnect, Charlestown, NH.** Project Manager on this \$3.5M potable water system upgrade which included 12,000 ft of 12" PVC pressure pipe, a new pump station, and other upgrades.
- **Western Maine Transportation Services, Auburn, ME.** Project Manager on this MaineDOT Locally Administered Project with a \$3.7M budget.
- **Construction Inspector, ME.** Portland Water District, Raymond, Cumberland, Falmouth, and Yarmouth, ME.
- **Chicopee Falls Sewer Separation Project, Chicopee, MA.** Asher served as a full-time construction observer on this \$188M sewer separation project that included \$12M-16M of construction/year.

#### Charles W. Lawrence, Technician Inspector Level III

**Education:** A.A.S., Civil Engineering Technology, University of New Hampshire, 1991

**Licenses:** NHDES – Licensed Septic Installer; NHDES – Licensed Septic Designer

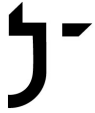
**Certifications:** ACI Concrete Field Technician - Grade I; NETTCP Concrete Technician #1217; NETTCP HMA Paving Inspector #706; NETTCP Soils & Aggregate Inspector #324, NHDOT LPA #1891, OSHA 10-hour, PTI Post Tensioning Inspector Level 1

- **NHDOT 12210C Hinsdale, NH – Brattleboro, VT.** Assistant to the NHDOT Project Engineer on this \$61M road and bridge project.
- **NHDOT Bureau of Construction.** As an assistant to the Project Engineer, responsible for the daily oversight of roadway and bridge construction and rehabilitation operations to ensure the work performed was done in a safe manner to both the workers and to the traveling public, was done according to NHDOT specifications and plans.
- **NHDOT Resurfacing District 4.** Contract administrator for two separate projects, each involving resurfacing of 60+ miles of roadway in various locations throughout Southwestern New Hampshire, involving a prime and several sub-contractors. Total contract amounts were \$1.9M and \$1.8M respectively.
- **NHDOT \$15.5M Route 9 Bridge and Roadway Project, Chesterfield, NH and Brattleboro, VT.** Assistant to the contract administrator for a bridge and roadway construction project located on Route 9.
- **Roadway and Bridge Project, Swanzey, NH.** Contract administrator for a roadway & bridge replacement project involving a prime and many subcontractors located on Rte. 32 in Swanzey.
- **Belmont Village Revitalization Phase 2, Belmont, NH.** As the Resident Engineer, responsible for construction observation, quality assurance that work was done in accordance with NHDOT specifications and standards, material quantity measurements, contractor coordination, and associated construction administration paperwork for payments and closeout.

#### Nate Cutter, Technician Inspector Level III

**Certifications:** NETTCP HMA Plant Tech #746m; NETTCP HMA Paving Inspector #2389; NETTCP Soils & Aggregate Inspector #674; NETTCP Soils & Aggregate Lab Tech #221, Troxler Nuclear Density Gauge Operator

- **MaineDOT.** \$1.75 Million Resident Engineer Oversight multi-year contract. Served as a RE for 10 Maine DOT projects since 2010.
- **Construction Management, Resident Inspection, Materials Testing and Laboratory Services, RI.** Brought into the City of Providence \$3.2M Roadway Improvement Program as a second Resident Inspector for Contract 4 as this 37 streets contract was accelerated from a 2-year to a 7-month project.



### Matthew R. Scherer, Technician Inspector Level III

**Education:** A.A.S., Civil Technology – Surveying and Mapping, University of New Hampshire

**Certifications:** NHDOT LPA #1970, NHDOT LPA Certification for Labor Compliance, MaineDOT LPA, NETTCP HMA Paving Inspector #2987, NETTCP Concrete Inspector #2319, NRC Fundamentals of Safety & Gauge Operation

- **Miracle Mile & Mechanic St Water Main Improvements, Lebanon, NH.** Resident inspection for installation pressure pipe, hydrants, fire services, domestic water services, and construction sidewalk and ADA ramps.
- **Water System Interconnect, Charlestown, NH.** Resident inspection for installation of 12,000 linear feet of 12" PVC pressure pipe, hydrants, domestic water services and booster station.
- **Brighton Ave Sewer Separation, Portland, ME.** Resident inspection for installation of 1,800 linear feet storm drain piping and associated manholes and catch basins.
- **District Road Pump Station and Force Main Improvements, Portland, ME.** Resident inspection for installation of 1,900 linear feet of 3-inch HDPE force main pipe and installation of new pump station.
- **Preble St. Sewer Separation Phase 1 & Phase 2, Portland, ME.** This project consisted of a sewer separation construction project located within Preble Street Extension and Marginal Way (phase 1) up to Cumberland Ave and from Preble St and Kennebec Street (phase 2).
- **Hill St. Sidewalk Construction, Lexington, MA.** Consisted of constructing approximately 4000 linear feet of asphalt sidewalk, granite curbing, drainage structure installation, retaining walls and ADA ramps/landings. Providing construction administration and construction inspection services.
- **I-93 Widening Project, Manchester/Londonderry, NH.** As Site Supervisor, responsible for overseeing employees performing construction activities related to roadway construction.
- **I-91 Bridge Replacements - Bridges 8N&S and 9N&S, Brattleboro, VT.** Quality Assurance Inspector for the FIGG Bridge post-tensioned segmental superstructure construction observation at Bridge 9 over the West River on Interstate I-91 in Brattleboro, Vermont.
- **North Bridge, Keene, NH.** Resident Engineer for the North Bridge inspection. This project involves furnishing construction inspection services, including certified welding of structural steel inspection, relate to the construction of the North Bridge which carries a multi-use trail over NH Routes 9, 10, and 12.
- **I-89 Construction, Lebanon, NH.** Resident Project Representative for project involving design, permitting, and approvals.

### Robert C. Henson, II, Senior Resident Engineer

**Education:** B.S., Environmental Studies, University System of New Hampshire, 2002

**Certifications:** NHDOT LPA; MaineDOT LPA; NETTCP HMA Paving Inspector #2700

- **MaineDOT Construction Management, Level 3 Inspection, West Paris-Turner and Moscow-Caratunk, ME.** Level III Inspector for the Maine Department of Transportation which included 25 miles of state highways with a construction budget of over 10 million dollars.
- **MaineDOT Full Construction & Overlay, Caratunk/Moscow, ME.** Chief Engineer for this full reconstruction of 5.5 miles on RT. 201 between Moscow and Caratunk, Maine.
- **Roadway Improvement Program, Providence, RI.** Resident Inspector for \$40M City of Providence Roadway Improvement Program. In charge of inspection services on Contract 2 which included 29 streets with a construction budget of over \$3.5M. Responsible for Contract 11 which includes 28 streets with a construction budget of just over \$3M.

### Benjamin Grigas, PG, CG, Environmental Inspector

**Education:** B.S., Geology, University of New Hampshire, 2001 **Licenses:** Professional Geologist NH #0790

- **USPS Environmental Compliance and Risk Management Contract Regional Lead.** Managed numerous task orders under large contracts with USPS.
- **USPS Northeast Area Regional Contract Manager.** Contract Manager for regional indefinite delivery/indefinite quantity contract.
- **N. Granese & Sons, Inc. Environmental Support.** Environmental support for site contractors in MA and NH.





### Richard Seymour, Technician Inspector Level III

**Education:** A.S., Civil and Engineering Technology, Vermont Technical College

**Certifications:** NHDOT LPA (expired, scheduled for 5/2024); NETTCP HMA Paving Inspector #4127

- **CSO 11, City of Lebanon, NH.** Inspection and Resident Project Representative services provided for water main, sewer main, & storm drain replacement, full depth road reconstruction with sidewalk & curbing construction along 16 city streets in a densely populated residential neighborhood.
- **VTrans At-the-Ready Consultant Engineering Services for Municipalities:** Construction Inspection services to Vermont Municipalities on locally managed projects for up to 5 years.
- **Federal Street Connector Phase 1, City of St. Albans, VT.** Provided all construction management, financial oversight, onsite inspections, and materials testing for the Federal Street Connector Project in St. Albans, VT.
- **Putney Park & Ride, VT.** Project Manager for the construction of a new park and ride facility.
- **City Center Project, Rutland, VT.** Provide Resident Engineering and engineering oversight for roadway, sidewalk, utility, and streetscape improvements for the construction of the Center Street Marketplace.
- **Valley Street Box Culvert, Springfield, VT.** Project Manager for replacement of an existing corrugated culvert with an approximately 16' x 8' x 40' box culvert.

### Ellen Ianello, Project Manager / Engineer Inspector Level II / Env. Inspector

**Education:** B.S., Environmental Engineering, Clarkson University; B.S., Civil Engineering, Clarkson University,

**Certifications:** NHDOT LPA #2068, MaineDOT LPA, LEAN Construction Training, NFPA 70E Electrical Safety Standards, OSHA 30-hour

**Affiliation:** City of Dover, NH Planning Board Member

- **Maine LAP: Whipple Road Sidewalk Project WIN 19394.00, Kittery, ME:** Project Manager this project consisted of the installation of new 12"/15" drainage lines, catch basin structures and underdrain runs.
- **Concord DPW Operation Facility, Concord, NH:** Serving as Project Manager for two new DPW buildings, the Dam Bureau's Construction and Ops Facility (22,719sf) and the Watershed Bureau's building (6,875sf).
- **Dover High School and Career Technical Center, Dover, NH.** As Senior Project Engineer, worked in a project management role with the City of Dover to manage project financials, change orders and close-out documentation for an \$80M high school, which included technical labs.
- **DC Water Blue Plains AWWTF Clean Rivers Project: Tunnel Dewatering Pump Station and Enhanced Clarification Facility, Washington, DC.** Commissioning Project Engineer. Mechanical and system commissioning on the design-build construction of a \$260M advanced wastewater facility.

### John McCarthy, Technician Inspector Level III

**Education:** Architectural Engineering, New Hampshire Technical Institute; Geology, UNH, 1995

**Certifications:** NHDOT LPA; Maine DOT LPS; ACI Concrete Field Testing Technician - Grade I, ACI Masonry Field Testing Technician, NETTCP Concrete Inspector #1732, NETTCP Concrete Technician #1122, Drilled Shaft Inspector #550, HMA Paving Inspector #2988, NETTCP HMA Plant Technician #919, NETTCP QA Technologist #1067, NETTCP Soils & Aggregate Inspector #1052, Nuclear Densitometer

- **NHDOT Statewide Resurfacing Project.** Provided monitoring, inspection, and documentation services for \$4.7m statewide resurfacing contract. Project involved cold-planing existing Tier 2 roadways, new pavement, and bonded wearing course placement, as well as striping and new guardrail structures.
- **NHDOT I-93, Salem to Manchester.** Provided inspection, testing and documentation services for multi-year, multi-phase expansion of Interstate 93. Work involved construction of multiple new bridges and new highway sections, as well as widening of existing roadway.
- **Whipple Road Sidewalk Project (MaineDOT LPA), Kittery, ME.** Resident Engineer for the municipality of Kittery. Consisted of installation of new 12"/15" drainage lines, catch basin structures and underdrain runs.
- **WMTS Garage Expansion (MaineDOT LPA), Auburn, ME.** Resident Engineer for Western Maine Transportation Services. Project consisted of selective demolition of site/building and construction of a 2-bay maintenance garage extension to the existing garage & office structure.



- **FPTAC Water, Sewer & Drainage Improvements Project, Jaffrey, NH.** Resident Project Representative for Forest Park Tenants Association Cooperative/CMA Engineers.
- **Whittier Street Bridge, Dover, NH and Sagamore Creek Bridge, Portsmouth, NH.** Served as Soils, Concrete, and HMA Inspector.
- **Foundry Parking Garage, Portsmouth, NH.** Soils, Concrete, Masonry & Special Inspector. Represented the City of Portsmouth providing testing and inspection services for the construction of a 5-level, 600 space parking garage. Inspection/testing duties involved concrete foundations, soils preparation, and pre-cast concrete panel & support repairs.

#### **Robert Laroche, P.E., Engineer Inspector Level III**

**Education:** B.S., Contracting, Mississippi State University; M.S., Business, Husson University

**Licenses:** NH PE #16483; NH Landscape Architect #00185 | **Certifications:** NHDOT LPA; MaineDOT LPA

**MaineDOT Recent Projects:** Carthage/Dixfield Ultrathin Bonded Wearing Course; Livermore Ultrathin Bonded Wearing Course; Scarborough/South Portland Pavement Milling HMA Overlay; Norridgewock/Farmington Crack Seal; Jay Cyclical Pavement Restoration; Gilead Bethel Ultrathin Bonded Wearing Course

- **MaineDOT, Augusta, ME.** As Supervisor Landscape Architecture and Environmental Specialist IV, lead teams in implementing a portfolio of public works projects.
- **Bay Street Improvements, Westerly, RI.** As Resident Engineer, responsibilities included assuring the contractor was performing task in compliance with the specifications and plans.

#### **Brian Fletcher, Technician Inspector Level III**

**Education:** A.S., Construction Management and Principles, Vermont Technical College, Randolph, VT

**Certifications:** NHDOT LPA, NETTCP Concrete Inspector #1718, NETTCP HMA Paving Inspector #4233, NETTCP HMA Plant Technician #1077m, NETTCP Soils & Aggregate Inspector #567, NHDOT LPA #1969, PCI Level II, Quality Control Personnel Certification Technician Level 2, Nuclear Regulatory Commission, Troxler Certified

- **NHDOT Inspections.** Precast/prestressed concrete work which included SIP panels, box beams, bulb T girders, box culverts, MSE wall panels, and barrier.
- **NHDOT Projects.** Responsible for reporting as to whether the concrete, soils, asphalt, and many other construction materials on various projects met the project specifications.
- **City Hall Park, Burlington, VT. Provide Chief Construction Inspector and Resident Engineer services for a \$4.5M complete park upgrade and reconstruction.**
- **City Hall Park, Burlington, VT.** Provide Chief Construction Inspector and Resident Engineer services for a \$4.5M complete park upgrade and reconstruction. Upgrades included a 25-nozzle dancing water fountain, onsite stormwater management, all new services, and utilities.

#### **Kevin Bachelder, Resident Engineer**

**Certifications:** NHDOT LPA; MaineDOT LPA; NETTCP HMA Paving Inspector #2658

- **MaineDOT Construction Management, Level 3 Inspection.** Kevin served as the chief inspector for 6 years on various projects in the towns of Farmington Jackman, Lewiston, Rumford-Mexico, Auburn-Livermore, Jackman,
- **Long Pond, South Paris, West Paris, and Caratunk/Moscow.** Project scopes include Hot In-Place Asphalt, Cold In-Place Asphalt, Overlay, Full Depth Reconstructions, Pedestrian Safety Improvements, Drainage Improvements, and various other road construction scopes.
- **MaineDOT LAP – Western Maine Transportation Merrow Road Garage.** Kevin served as the Resident Engineer on this \$3M project which included a large maintenance garage expansion, parking area expansion, environmental and stormwater management improvements, and other site improvements. Funded by Federal Transit Authority reimbursements through the MaineDOT the project had many Buy America requirements that had to be vetted and documented.



# **APPENDIX B:**

## **Applicable Work Experience**



## APPENDIX B: APPLICABLE WORK EXPERIENCE

**NHDOT On-Call Construction Engineering and Inspection Services Contract.** JTC was awarded a statewide on-call \$1.95M contract for construction engineering and inspection services for highway and bridge construction projects for the past two 3-year terms, and recently renewed through 2027. The services we have provided under this contract include paving inspection and construction support, full depth recycled pavement with emulsion, common excavation for slope construction, box cut placement of aggregate base coarse, grading operations, RCP (reinforced concrete pipe) installation, slope stabilization, stone ditch, rip-rap installation, dirty borrow placement, rebuild-manhole with frame and cover installation.

**NHDOT 12210C, Hinsdale, NH / Brattleboro, VT.** JTC provided resident engineering oversight services for this shared NH/VT road and bridge project that includes the construction of a new bridge spanning the Connecticut River, linking southern Vermont and New Hampshire. The new bridge will be a 1,800' long, 8-span, 46' wide structure with 7 piers (4 in the river) and 2 abutments. The layout is crucial due to the curved steel girder structure. The project also includes:

- 2,000' of roadway reconstruction on VT Rte 142. The roadway profile was raised approx. 15VF to clear the railroad. Scope includes underground power and communication, upgraded water main, large closed drainage system and gravel wetland, contaminated railroad soils, and mechanically stabilized earth retaining walls.
- 800' roadway reconstruction on new alignment for NH Rte 119. Extensive utility relocation work was done prior to the bulk of the construction, as well as the construction of a dewatering basin for cofferdam dewatering, and a closed drainage system.



**NHDOT All Electronic Tolling, Contract #29440, Dover-Rochester, NH.** State-funded \$24.4M conversion to aerial electronic tolling on the Spaulding Turnpike. JTC's scope of services includes contractor oversight presence during construction; documentation of daily activities through NHDOT's online system, iPDWeb; provide project status updates to the contract administrator; provide verification of project quantities expended, anticipated, and accepted for payment; ensure project adherence state requirements; provide inspections of contractor and sub-contractors work ensuring it complies with project specifications and plans as provided by the client; and provide material testing for acceptance measures that may be required.

**NHDOT Route 16 Bridge Replacement & Reconstruction, Ossipee, NH.** JTC provided resident engineering oversight services for the federally-funded \$17.8M Route 16/25 Ossipee Bridge Replacement and Reconstruction/Rehabilitation Contract# 14649 [Federal-Aid Project Number X-A000 (490)]. This project consisted of replacing three Red List bridges (two by bridge slide) and resurfacing approximately 3.2 miles of highway. JTC's scope of services include: contractor oversight presence during construction; preparation and documentation of daily activities through reports and construction logs; provide project status updates to the contract administrator; provide verification of project quantities expended, anticipated, and accepted for payment; ensure project adherence to federal and state requirements; provide inspections of contractor and sub-contractors work ensuring it complies with project specifications and plans as provided by the client; and assist with material testing for quality control measures that may be required.

**NHDOT Statewide Paving Preservation Projects #40868 and #41534.** These 2 contracts totaling \$11.4 million were both awarded to Pike Industries of Belmont, NH. The projects combined consisted of 47.8 miles of roadway rehabilitation at 16 individual work sites involving drainage and guardrail upgrades, sidewalk replacement for ADA compliance, pedestrian detection system installation, minor earthwork items, roadside ledge cut rock scaling, cold planing, and pavement inlay, various treatments of pavement overlay, signage improvements, pavement markings, and landscaping. JTC provided assistance to the NHDOT Resident Engineer starting May 2018 and is still ongoing. Our responsibilities included pre-construction layout, construction oversight to assure conformance with NHDOT plans and specs, daily work and progress documentation,



measuring and documentation of quantities, preparing contractor payment documents, implementing and administering the QC/QA testing plan for incentive/ disincentive payments, final inspection punchlist creation, and project final record preparation. Our staff was often working without direct supervision due to multiple operations at multiple sites occurring daily. While overseeing construction activities, JTC staff was required to make minor field design changes on the fly to enable forward progress and provide documentation to NHDOT in support of these modifications. Approximately 30% of JTC's work hours involved night and weekend operations.

**NHDOT Statewide Paving Preservation Project #41527.** This \$4.7M project consisted of resurfacing over 18 miles of Tier 2 roadway segments in the counties of Hillsborough, Merrimack, Rockingham, Grafton, and Belknap. The project required multiple areas of cold-planing and grinding, placement of asphalt overlay and bonded wearing course, and construction of new sidewalks and curbing, as well as fog-sealing, crack filling, line striping, and guardrail work. JTC worked with the NHDOT Contract Administrator to oversee the various operations. We monitored the paving operations, measured and recorded item quantities, collected material samples, evaluated the traffic control and documented the work in daily reports using the NHDOT software. JTC also maintained written and verbal correspondence with the individual contractors as well as the NHDOT engineering staff.

**Construction Engineering & Inspection, City of Lebanon, NH.** JTC is providing third-party Construction Inspection Services under a 3-year term contract including: provide inspection; record keeping; preparation of reports, participation in construction meetings; calculation and verification of quantities; review of invoices and pay requests; review of traffic control; development of as-built plans; inspection and approval of materials; review and recording of reports for materials and equipment inspection and testing; and, work related to construction inspection. Projects include road and highway reconstruction, bridge and culvert replacement, new utilities, ancillary highway appurtenances, erosion and sediment control, slope stabilization, and drainage improvements.



- **Downtown Tunnel Rehabilitation.** Rehabilitation of the former railroad tunnel and associated trail work, for use by both pedestrians and bicyclists. JTC is serving as the Resident Engineers representing VHB and the City for all on-site inspection and coordination of administrative project items.
- **Combined Sewer Overflow Project.** JTC provided a full-time Resident Project Representative (RPR) for the \$18.5 million Combined Sewer Overflow (CSO) project in Lebanon, NH. This CSO project involved 16 city streets within a densely populated residential neighborhood, consisting of water main, sewer main, and storm drain replacement; full depth road reconstruction; and sidewalk & curbing construction. Approximately 38,000 lineal feet of water, sewer, and storm mainline pipe are to be set. In addition to mainline pipe, each house among the 16 city streets was connected to the new sewer and water systems.

**Water System Interconnect, Charlestown, NH.** JTC provided full time Resident Engineering construction oversight, project management, and Quality Assurance testing for this ARPA funded water system interconnect project in Charlestown, NH. The project included the installation of 1,300 feet of 12' PVC water main and two pump stations with associated paving and restoration work. This project was the first of its kind for the funding sources used and viewed by all parties as a complete success. The project was completed ahead of schedule and on target for budget, with all federal funding requirements met. Federal funded project document requirements included Davis Beacon act documentation, Buy America documentation, DBE/MBE utilization documentation, adherence to state and federal construction guidelines, NPDES environmental compliance, and other documentation aspects specific to the ARPA funding used.

**Merrow Road Garage and Parking Expansion, Western Maine Transportation, Auburn, ME.** This project, funded by the Federal Transit Authority through the **Maine LAP program**, consisted of the demolition of an existing house and barn, extensive parking lot expansion, installation of 2 stormwater treatment ponds, and addition to the existing maintenance garage facility. The project required our Resident Engineer to facilitate





extensive coordination with the contractor and owner as the facility remained in service throughout the project. With the Federal Transit Authority funding component of the project, our Resident Engineer ensured project compliance with Buy America, Davis-Bacon Act, materials testing frequencies, and documentation formats to satisfy the funding source and maintain their contribution to the project.

**Maine LAP – Whipple Road Sidewalk Project WIN 19394.00, Kittery, ME.** JTC is providing Resident Engineer Services for the federally funded Whipple Road sidewalk construction project for the Town of Kittery, ME. We are responsible for working in cooperation with Town officials, the contracted design team, and others, to administer and document the construction of the project.



**Charles Street Water Main Replacement and Road Reconstruction, Milton, NH.** JTC was hired for full-time Resident Inspections and on-call Materials Testing Services for this \$1 million replacement of the Charles Street water main and road reconstruction project. The project consisted of replacing 4500-lf of 8" ductile iron water main and removing 5 existing hydrants and installing 2 new hydrants. This included connecting water services to the new water main. The work was coordinated with NHDOT field engineers and staff. The project also included repaving the entire length of Charles Street as well as the effected side streets. Our Resident Inspector's responsibilities included attending all project meetings with the design engineer, Milton Water Works, Town of Milton, Contractor, residents and NH State employees.

**MaineDOT - Multimodal Program: Highway Inspection, Construction Management and Support Services.** In 2010, JTC was awarded a \$1.75 Million 3-year GCA Contract for providing professional services for the Multimodal Program including highway inspections, rail inspections, Construction Management Support and Building Inspections for the Maine Department of Transportation. In 2015, JTC was awarded a \$6,150,000 GCA 3.5-year Term Contract for Construction Management and Resident Inspections for Highway and Multi-Modal Projects. In 2018, JTC renewed this contract for an additional 5 years and in 2019, provided 28 resident engineers on various projects throughout Maine.

**Federal Street Connector Phase 1, City of St. Albans, VT.** Richard Seymour of JTC recently provided all construction management, financial oversight, onsite inspections, and materials testing for the Federal Street Connector Project in St. Albans, Vermont. The project was developed to resolve traffic congestion, create a more pedestrian friendly and viable downtown area, and more effectively control the flow of traffic in an area with mixed transportation modes. The desire was to reconstruct the Federal Street corridor to improve its use by all forms of transportation modes including public transit, cars, trucks, pedestrians, and bicyclists. These improvements also created a local urban truck route to divert commercial traffic from the downtown area to Interstate 89. The project included 0.41 miles (2,161 linear feet) of roadway beginning on Allen Street approximately 150 feet south of the intersection with Market Street and Catherine Street and extended northerly along Market Street and Catherine Street through the Lake Street Intersection, and extended northerly along Federal Street for approximately 500 feet.

**Center Street Marketplace, City of Rutland, VT.** In 2016, JTC was contracted by the City of Rutland, Vermont to provide Resident Engineering and engineering oversight for roadway, sidewalk, utility, and streetscape improvements for the construction of the Center Street Marketplace. The Project is being currently constructed and is the result of the rehabilitation of the area known as "Center Street Alley". This project was funded by an earmark from Senator Patrick Leahy and grant is administered by the Rutland Redevelopment Authority. The project consisted of excavation/fill, re-establishment of new subgrade, upgrade and relocation of utilities, new pavement, lighting, stormwater upgrades, benches, decorative gates and fences, fountain, and other amenities. JTC performed onsite inspections; prepare daily reports; document site activities; track project quantities; verify materials; and provide contract management functions such as evaluation of subcontractors, contractor invoice review, maintenance of contract files, federal-aid DBE compliance, safety reviews, development of change



orders, and project schedule reviews. In addition, JTC conducted local business outreach and support, as-built documentation, and project closeout.

**VAST Trail and Bridge #68 Project.** In 2017 JTC provided construction inspection and project management duties for the replacement of Bridge #68 and critical trail repairs to the Lamoille Valley Rail Trail (LVRT) Project in Cambridge, Vermont for the Vermont Association of Snow Travelers, Inc. (VAST). The LVRT is a 93-mile state trail system runs east to west across the entire northern portion of the State from Burlington to St. Johnsbury, Vermont. JTC also provided critical oversight of all erosion and sediment control measures and acted as the On-Site Coordinator (OSC) for the project.

**Valley Trail Segment A Project, Dover, VT.** In 2016, JTC signed a contract with the Town of Dover, Vermont to perform construction management and resident engineering duties for this VTrans MAB funded project. This project included sidewalk roadway, and streetscape improvements for the length of approximately 2,086 feet along Route 100 in West Dover, Vermont. This project included approximately 1,925 linear of concrete sidewalks, 1,300 linear feet granite curbing, 1,200 linear feet drainage piping, 12 catch basins, bituminous asphalt paving, sub-base preparation, guardrail reset and replacement, pavement markings, detectable warning surfaces, crosswalk enhancements, road signs, electrical conduit, and 21 streetlights. JTC performed all contract management functions such as evaluation of subcontractors, contractor invoice review, permitting compliance, maintenance of contract files, federal-aid DBE compliance, safety reviews, flagger monitoring, development of change orders, and schedule reviews. In addition, JTC conducted value engineering support, survey documentation, onsite inspections, and project closeout.

**Historic Covered Bridge Rehab/Bridge Street Enhancement, Town of Waitsfield, VT.** JTC was selected to provide Resident Engineering oversight for this VTrans LTF funded project representing the Town of Waitsfield, VT. Specifically, the project involved the partial removal of the existing timber covered bridge and replacement with a new prefabricated steel multimodal cantilevered structure allowing for both pedestrian and bicycle use simultaneously.

**LOTICIP: Woodstock St. / Church St. / Bridge St. Rdwy and Sidewalk Improvement Project, Putnam, CT.** This project, funded by CTDOT through their locally administered project program known as Local Transportation Capital Improvement Program (LOTICIP), consisted of the complete removal and replacement of existing concrete and asphalt sidewalks, ADA compliance improvements, sections of roadway mill and overlay, and complete reconstruction, drainage and signage improvements, and other related items. The project was successfully delivered in 2022, and JTC was retained for a second contract of similar scope for the 2023 construction season.



**Multi-Modal Connection Project Browns Trace Road Sidewalk, Jericho, VT.** JTC was selected for the Construction Inspection Services of the Jericho Multimodal Connection Project. Construction included a concrete sidewalk, concrete catch basins, retaining wall, cedar 3-rail fence and other related items for a pedestrian improvement project. During the project, JTC was on the site daily, as needed, to properly monitor site conditions; maintain communications; prepare daily reports; document site activities; track project quantities; and verify materials, quantities, correct placement, workmanship, protection, site safety procedures, environmental controls, and other pertinent issues

**Construction Management, Construction Inspection, City of Providence, RI.** From 2013-2018, JTC was awarded five Construction Management/Construction Inspection contracts with construction costs totaling over \$15,000,000 with the City of Providence Public Works Department. Project Management responsibilities included; review of all daily reporting, reviewing all material testing reports to make certain all materials met specifications, review of Minority Business Enterprise (MBE/DBE) utilization, review of Fair Wage Law utilized by the City of Providence, biweekly meetings with contractor, utility companies, owner's representative, and DPW staff, review required First Source Labor Union utilization rates, meeting with contractors on-site to help solve critical changes in the field, reviewed all shop drawings for approval, reviewed all pay requests for approval,



created budgets for construction and construction management to track city expenditures, pre-approved all change orders, and maintained all paperwork digitally on the Owner Representative's Project Share Site. JTC's project manager also assisted the City with reviewing project schedule and forecasting.

**Contract 4 - Reconstruct 27 streets as part of the overall \$40M Roadway Improvement Program.** Cost of construction for Contract 4 was \$3.5M and included full depth reclaim, street leveling, concrete base repair, mill and overlay, concrete sidewalks, over 300 concrete ADA ramps, reset and handle new & used curbing, drainage improvements, sewer lining and repairs, and the inclusion of new way finding sign placement. Responsibilities included inspection of all facets of construction, documentation, resident notification, pre-construction videos, photo logs, SWPPP reporting, quantity verification, scheduling material testing, and meeting representation.

**Contracts 2, 4, 7, 9 and 11 and Downtown Circulator Project.** JTC provided Project Management oversight and Resident Inspection for these contracts with a total construction value of more than \$12M. Responsibilities included; meeting representation at all meetings, coordination of construction between the contractor and other utility construction, review of all project documentation prior to uploading to the Project Share Site, MBE/DBE review for compliance, First Source Apprentice review for compliance, pay requisition review and approval, shop drawing review and approval, budget projections, and the role of intermediary between contractor and City of Providence.

**Scope of Work and Tasks Involved in the projects mentioned above include:** Inspection of construction related items including removal and reset of curb, the construction of over 300 ADA handicap ramps, concrete and asphalt sidewalks, concrete and asphalt driveway aprons, full depth reclaim of roadways, trim and fine grade of reclaimed roads, micro-milling of roadways, installation of traffic cameras, traffic loops, concrete base repair, HMA placement of leveling course, placement of binder course, and top course placement, drainage structure repairs and replacement, sewer line and lateral repairs, water main and lateral construction and repair, clearing and grubbing, loam and seeding, street way finding sign installation, speed bump and signage construction, and adjustment of all structures prior to paving.

**Preble Street Sewer Separation Phase 1, City of Portland, ME.** This project consisted of a sewer separation construction project located within Preble Street Extension and Marginal Way. It included storm sewer pipes, various size manholes, CSO chamber modifications, trench paving, and other related construction. The goal of this project was to reduce Combined Sewer Overflow (CSO) activity into Back Cove by installing separated stormwater drains in the project area. JTC's scope of services included: construction administration; full-time construction inspection (including days, nights, and weekends); and materials inspection and testing.

**Construction Inspection Services, City of Augusta, ME.** JTC was selected to provide transportation construction inspection services for this federally-funded contract. Our scope of services includes the following (but not limited to): grade verification; quantity tracking; daily inspection and activity reports; verifying compliance of contractor's work to project specifications; sampling of construction materials, including HMA, PCC, and aggregates; compaction verification; and informing the city of possible claims and disputes.

**City Hall Park, City of Burlington, VT.** JTC was the Resident Engineer for the total reconstruction of the beautiful City Hall Park. This outdoor community greenspace is in front of City Hall and directly adjacent to two iconic cultural organizations: the Burlington City Arts (BCA) and the Flynn Center for the Performing Arts. The city removed all old and outdated fixtures and installed all new underground services for electrical, sewer, and water. A 1,000-sf interactive water feature and many new performance areas were installed in the park. The park is also very environmentally friendly with the addition of 3 large rain gardens that accept stormwater from the street, Pervious Pavers, soil cells, and many other features. Our scope of services includes coordinating and facilitating a preconstruction conference; review of contractor submittals, material testing and certification; review of material testing results; coordination with the city and contractor; full-time on-site construction observation; final inspection; and all material inspections.

