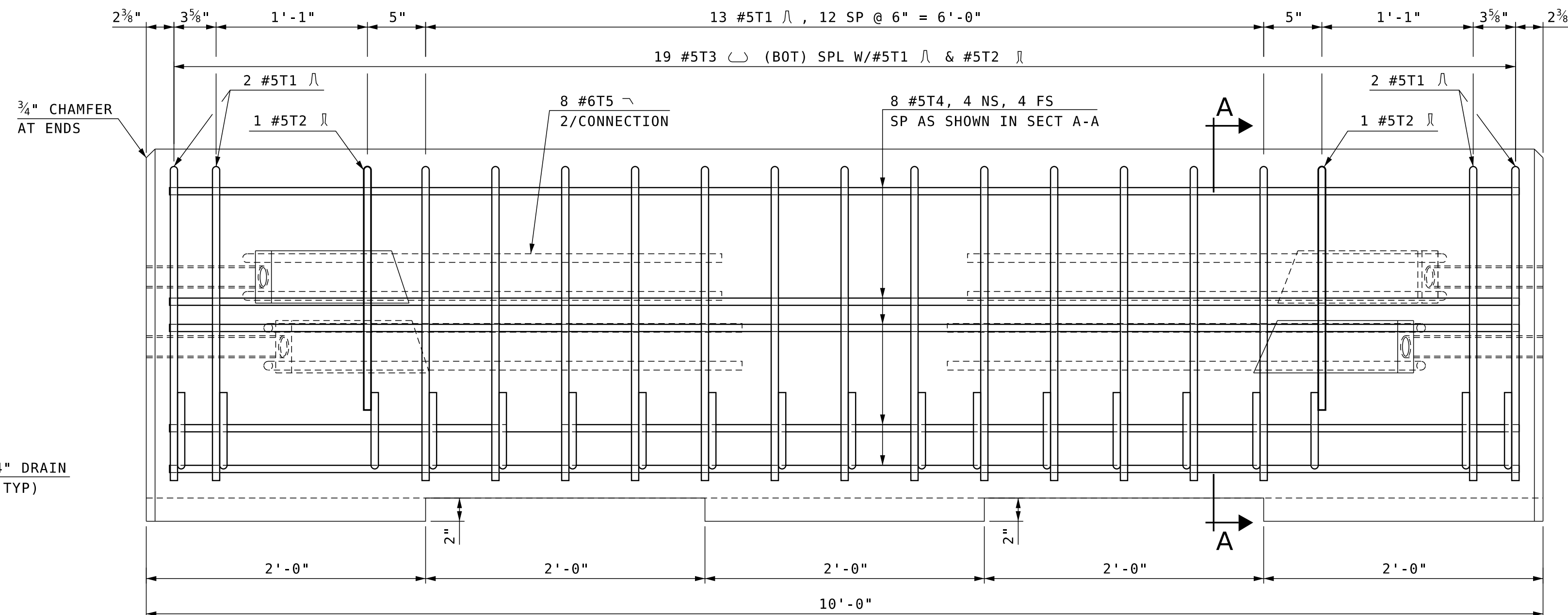


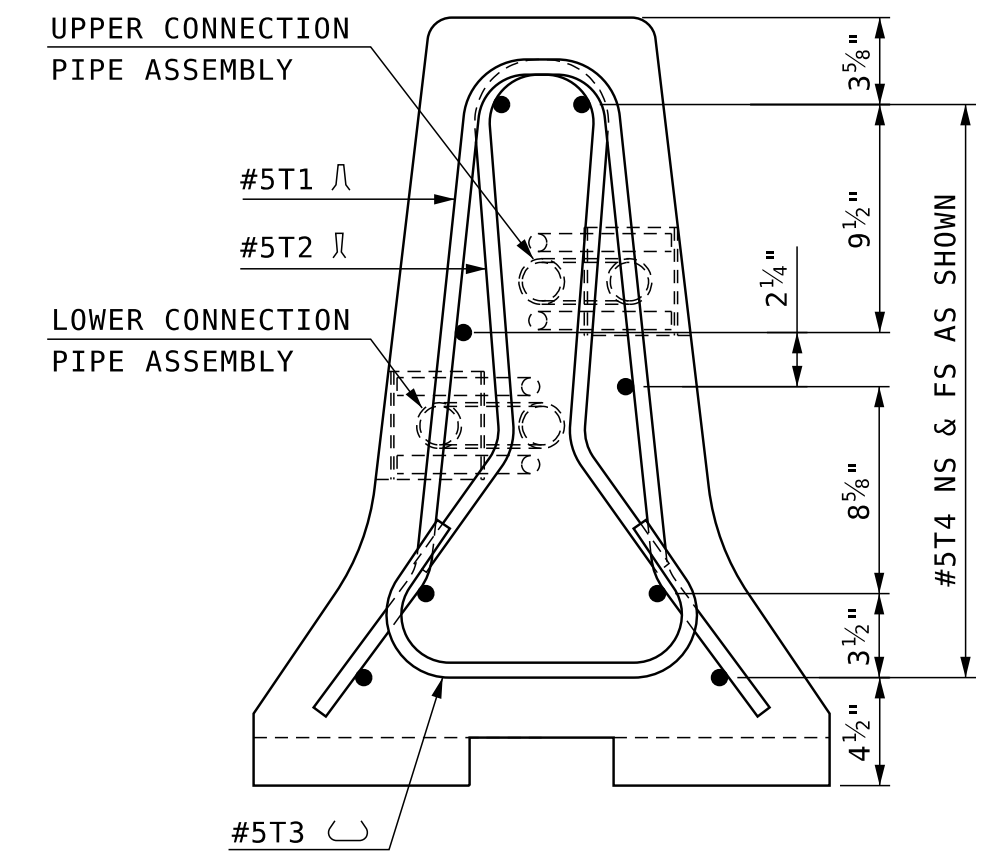
END VIEW

SCALE: 1 1/2" = 1'-0"



BARRIER ELEVATION

SCALE: 1 1/2" = 1'-0"



SECTION A-A

SCALE: 1 1/2" = 1'-0"

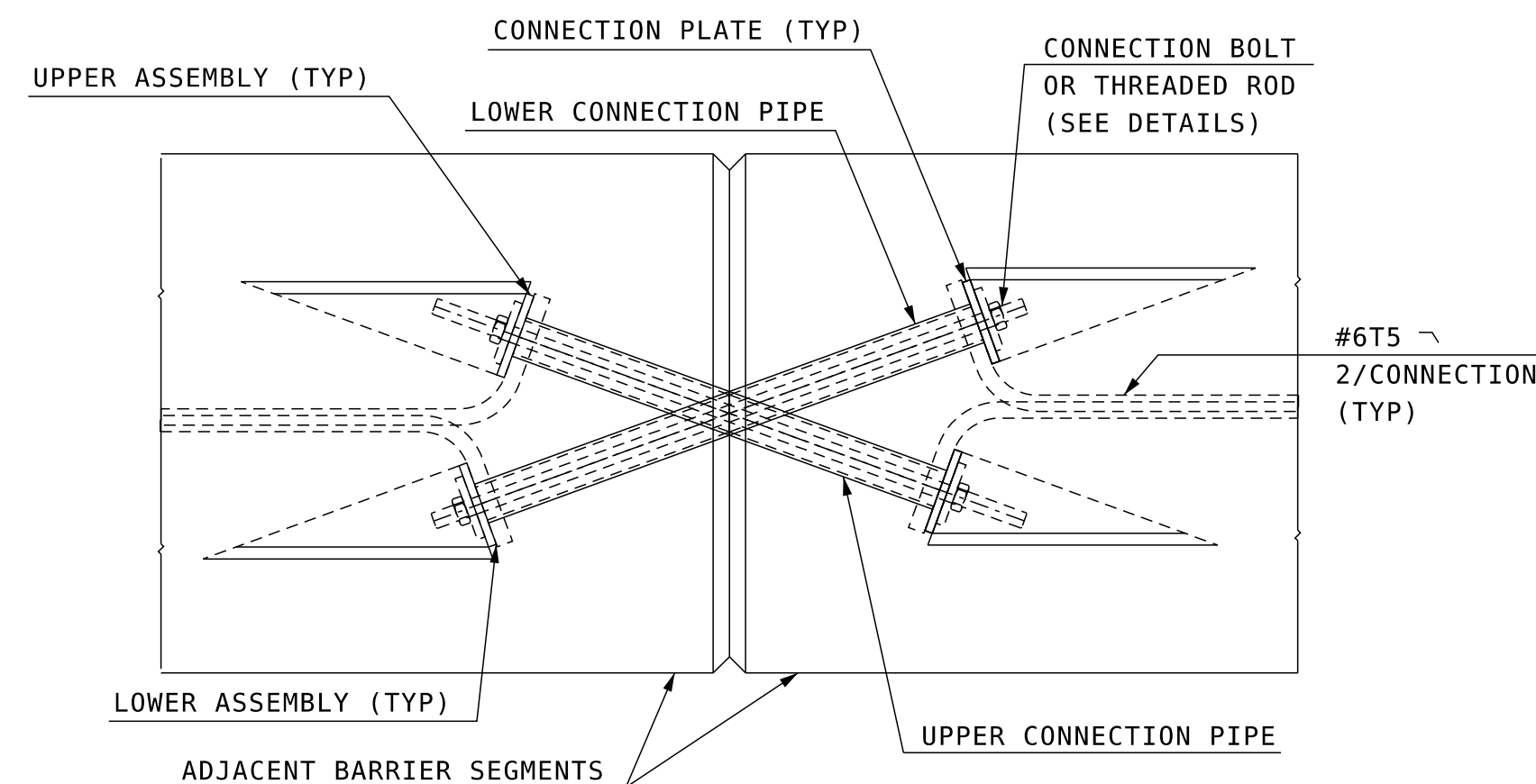
GENERAL NOTES:

- PORTABLE CONCRETE BARRIER SHALL BE FURNISHED BY THE CONTRACTOR AND PAID FOR AS ITEM 606.41741, PORTABLE CONCRETE BARRIER FOR TRAFFIC CONTROL (BRIDGE). CONCRETE BARRIER AND ALL ATTACHMENTS SHALL BE FABRICATED IN ACCORDANCE WITH SPECIAL PROVISIONS. ALL BARRIER UNITS SHALL BE 10' LONG.
- PORTABLE CONCRETE BARRIER DETAILS, AS SHOWN ON THESE PLANS, ARE IN COMPLIANCE WITH REQUIREMENTS PER UPDATED NCHRP REPORT 350 FOR TEST NO 3-11 (MASH TEST LEVEL 3), CRASH TESTED BY TEXAS A&M UNIVERSITY SYSTEM, MAY 2005, AND ACCEPTED PER REPORT FHWA/TX-05/0-4692-1.
- THE BARRIER HAS BEEN CRASH TESTED WITH A 27" DYNAMIC DEFLECTION WHICH WILL ALLOW THE BARRIER TO BE PLACED A MINIMUM 12" FROM THE EDGE OF THE DECK.
- USAGE OF THE TEXAS X-BOLT BARRIER REQUIRES A MINIMUM OF 100 LINEAR FEET (10 - 10' UNITS). THE X-BOLT BARRIER SHALL EXTEND A MINIMUM OF 50' BEYOND THE BRIDGE AT EACH END, PARALLEL TO THE ROADWAY CENTERLINE. THE ENDS OF THE BARRIER SHALL CONNECT TO THE TRANSITION UNIT AND THEN TO NHDOT PCB FLARED OUT THE REQUIRED CLEAR ZONE AS SHOWN ON SHEET 2 OF 3.
- THE CONNECTION BOLTS AT THE BARRIER JOINTS SHALL BE TIGHTENED TO THE "TURN OF THE NUT" METHOD IN ACCORDANCE WITH SECTION 550.3.11.6.4 OF NHDOT STANDARD SPECIFICATIONS. AFTER INSTALLATION, ALL X-BOLT JOINTS SHALL BE CHECKED BY THE CONTRACT ADMINISTRATOR CONFIRMING THEY MEET THE TIGHTENED REQUIREMENT.
- THE TEXAS X-BOLT BARRIER MAY BE INSTALLED WITH A 125' MINIMUM RADIUS OF CURVATURE AND A RELATIVE ANGLE OF 4 DEGREES BETWEEN THE 10' UNITS.
- THE CONTRACTOR SHALL FURNISH AND INSTALL APPROVED RETROREFLECTIVE DELINEATORS AT 25-FOOT INTERVALS ALONG TOP AND/OR ONE FOOT DOWN THE SIDE OF PORTABLE CONCRETE BARRIER, SUBSIDIARY TO ITEM 606.41741 (SEE STANDARD NO. DL-1 OF NHDOT STANDARD PLANS FOR ROAD CONSTRUCTION). THE COLOR OF THE DELINEATORS SHALL, IN ALL INSTANCES, CONFORM TO THE COLOR OF THE EDGE LINE MARKINGS. DELINEATOR SUPPLEMENT, BUT DO NOT REPLACE, THE NEED FOR RETROREFLECTIVE SOLID EDGE LINE MARKINGS.

MATERIAL NOTES:

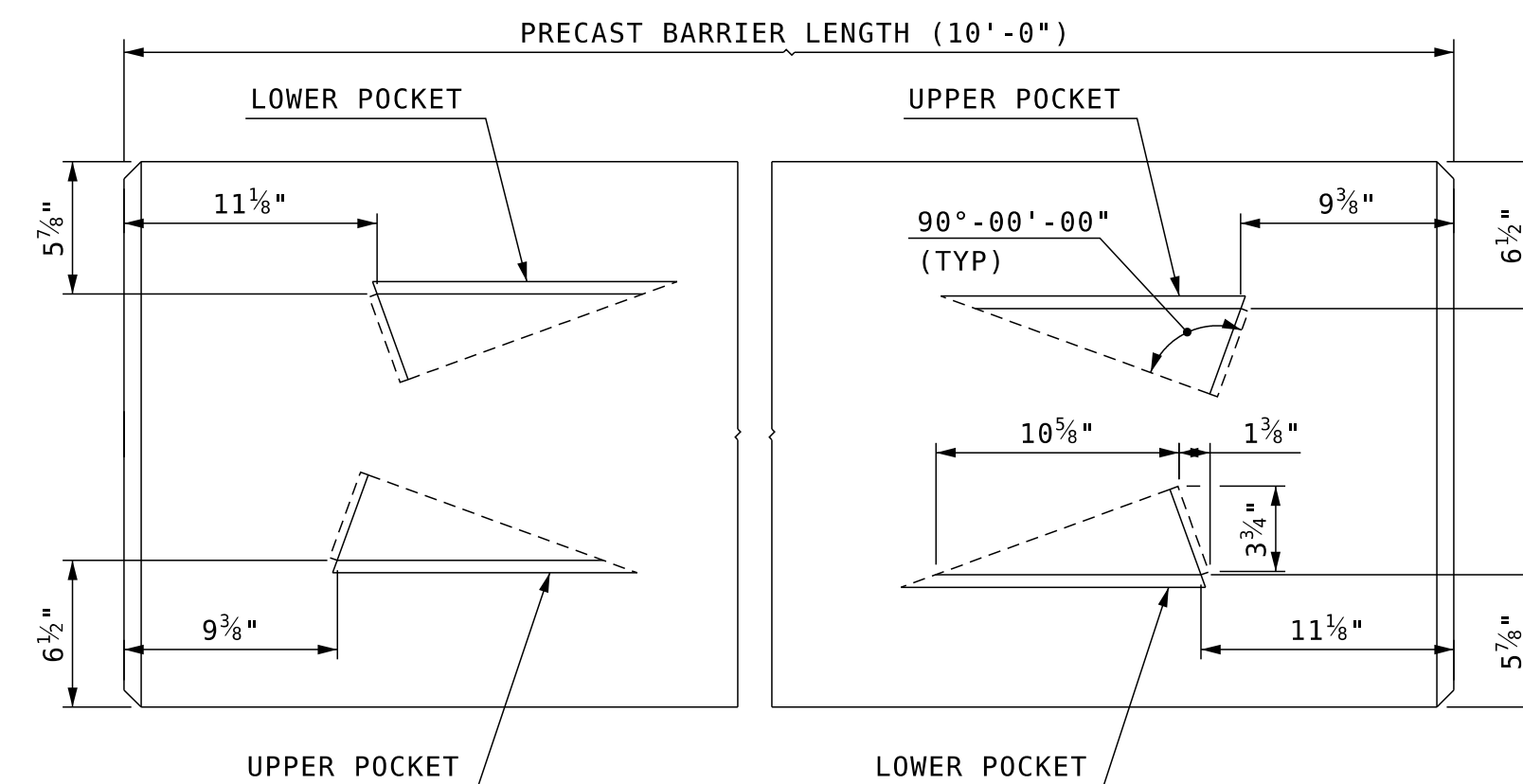
- BARRIERS SHALL BE LIGHT COLORED CLASS AA CONCRETE, WITH COMPRESSIVE STRENGTH OF 4000 psi, AND SHALL HAVE A SMOOTH UNIFORM SURFACE FREE OF DEFECTS AND IRREGULARITIES. CASTING DATE SHALL BE SHOWN ON BARRIER. ALL EXPOSED EDGES OF CONCRETE SHALL BE CHAMFERED 3/4", UNLESS OTHERWISE NOTED.
- ALL REINFORCING STEEL SHALL BE AASHTO M31 (ASTM A615) GRADE 60. ALL REINFORCEMENT SHALL HAVE 1 3/4" MINIMUM CLEAR COVER, UNLESS OTHERWISE NOTED.
- CONNECTION BOLTS SHALL BE 7/8" Ø GALVANIZED HIGH STRENGTH THREADED RODS CONFORMING TO ASTM A325. STEEL PIPES, PLATE WASHERS, AND CONNECTION PLATES SHALL BE GALVANIZED ASTM A36 STEEL.
- ALL STEEL FOR CONNECTIONS SHALL BE GALVANIZED IN ACCORDANCE WITH SECTION 550.

NOTE: CONNECTION HARDWARE SHALL NOT EXTEND BEYOND THE CONCRETE FACE OF BARRIER



TYPE X JOINT CONNECTION DETAILS

SCALE: 1 1/2" = 1'-0"



TOP VIEW CONNECTION POCKETS

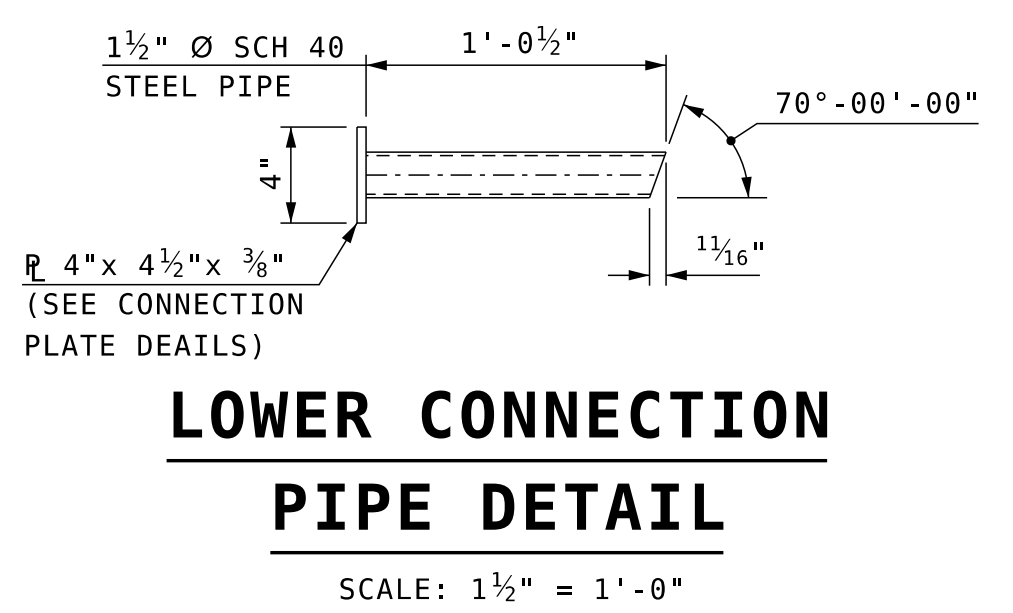
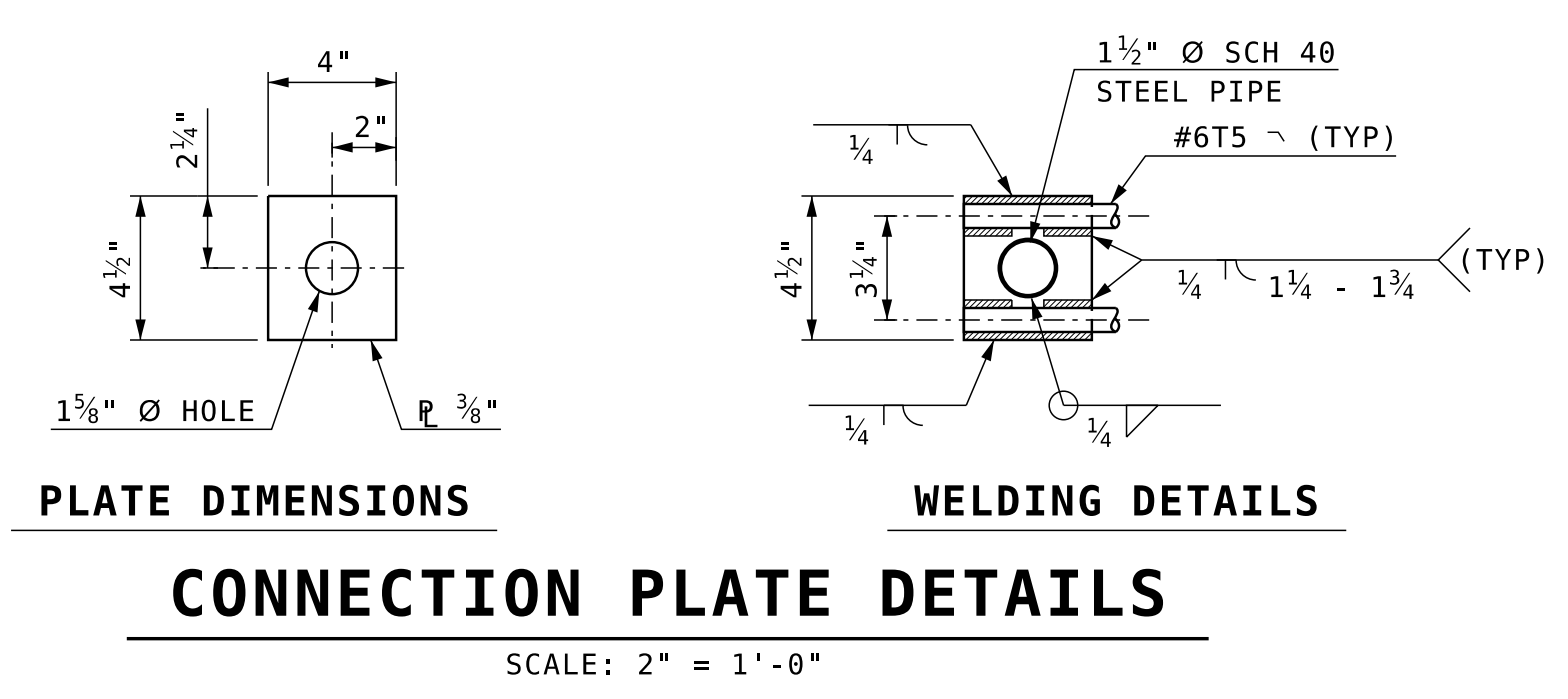
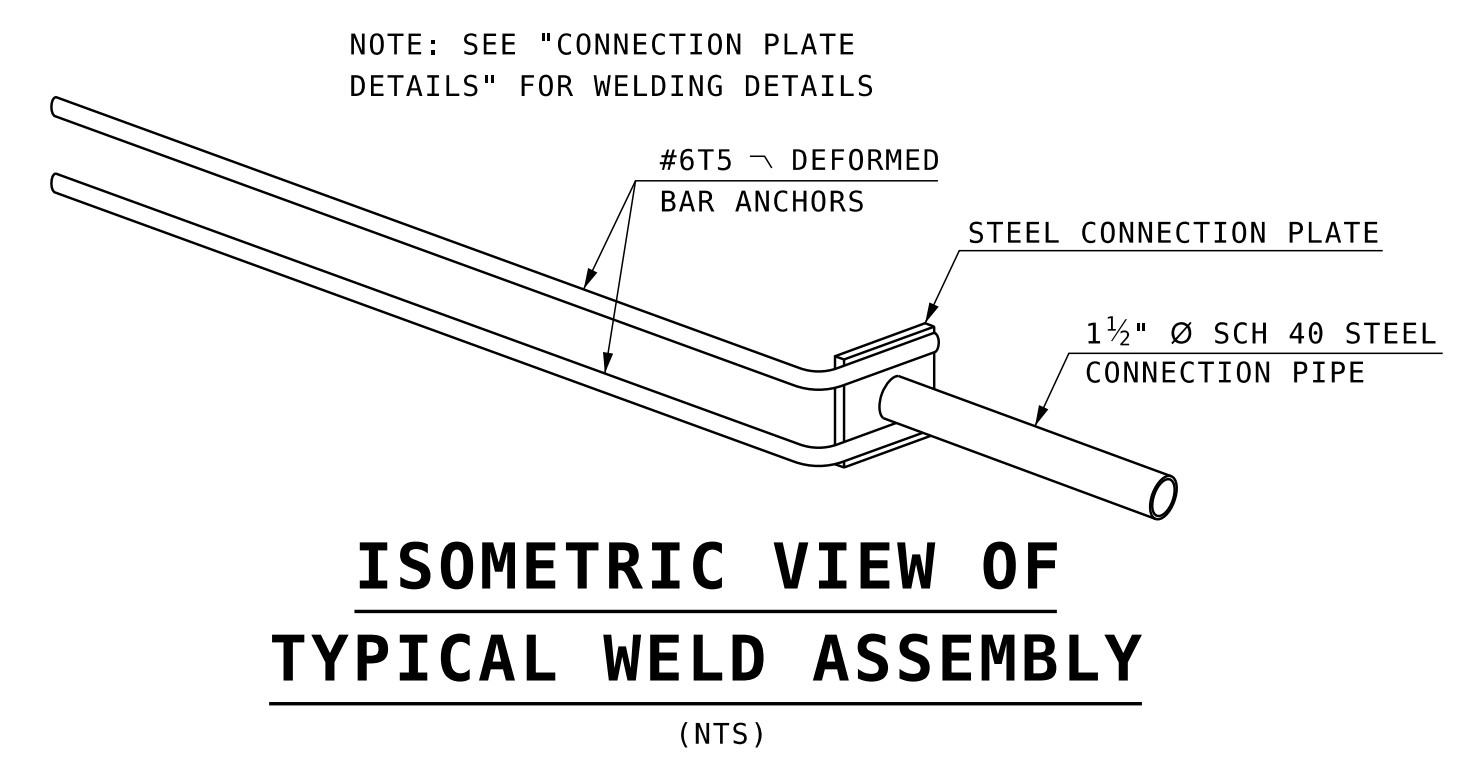
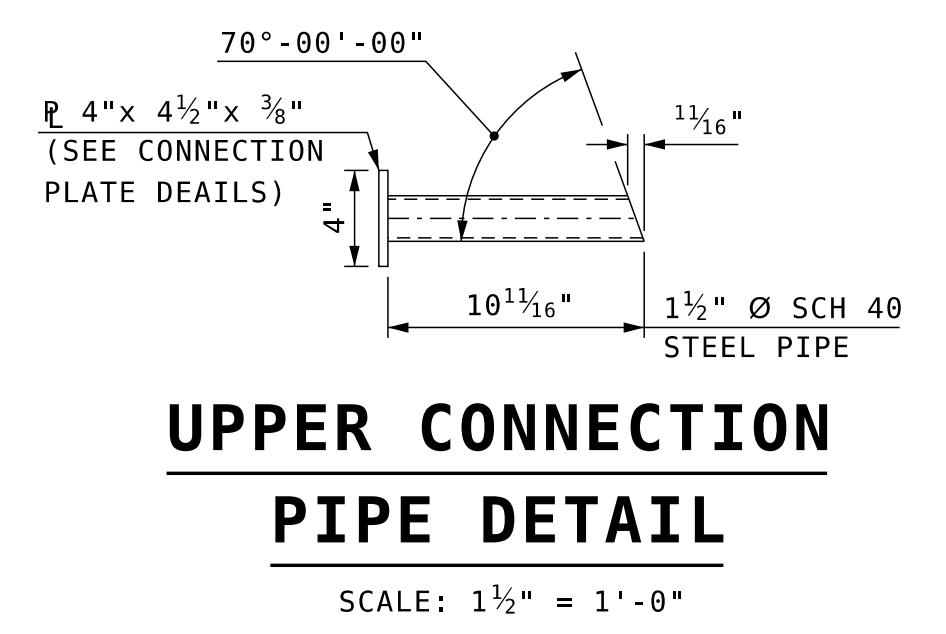
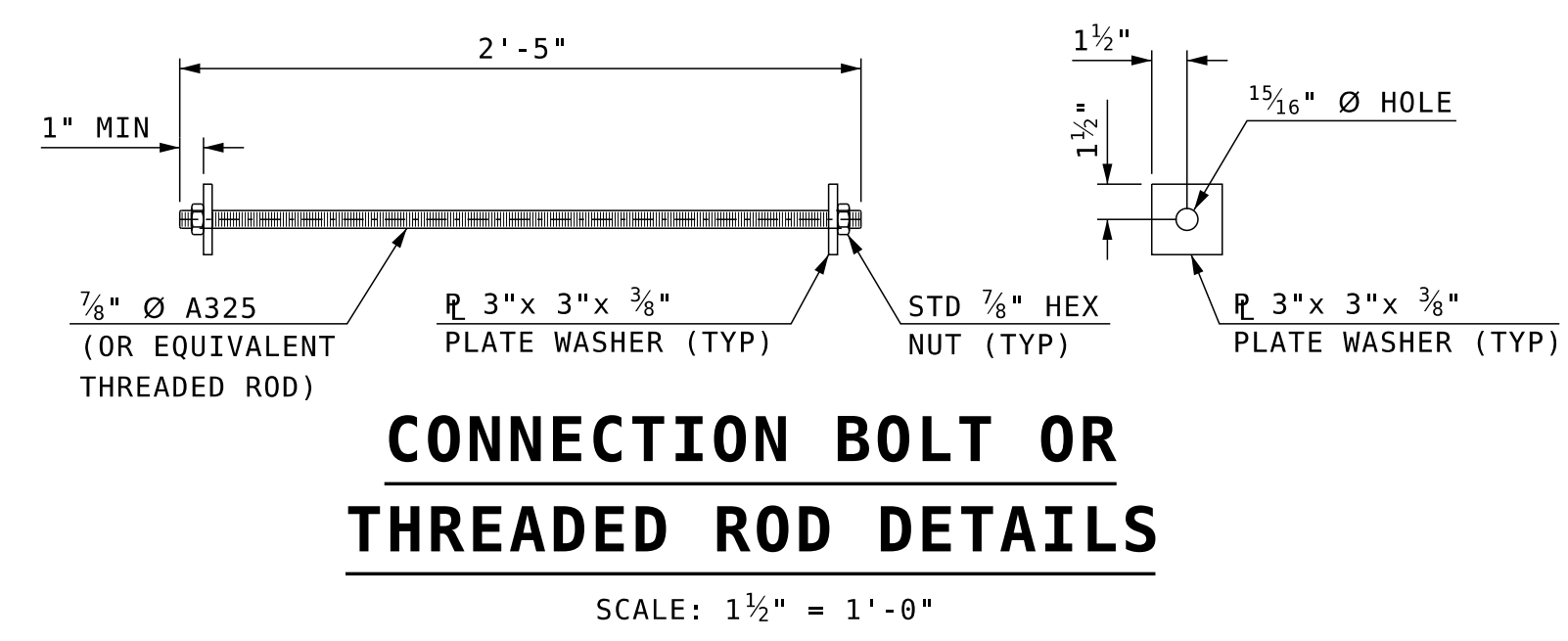
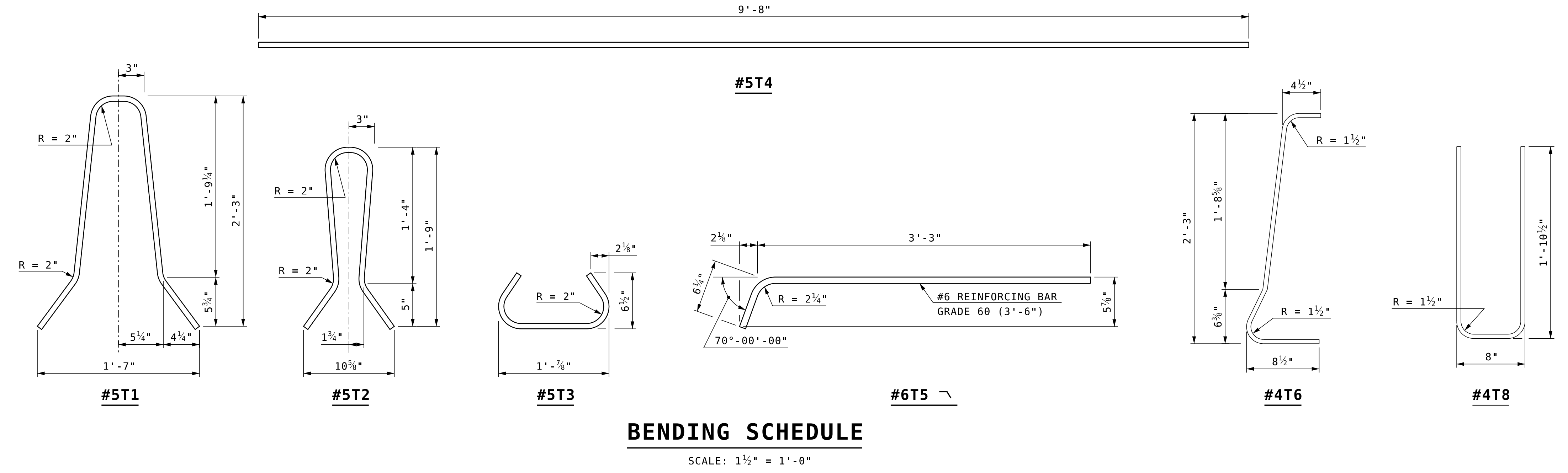
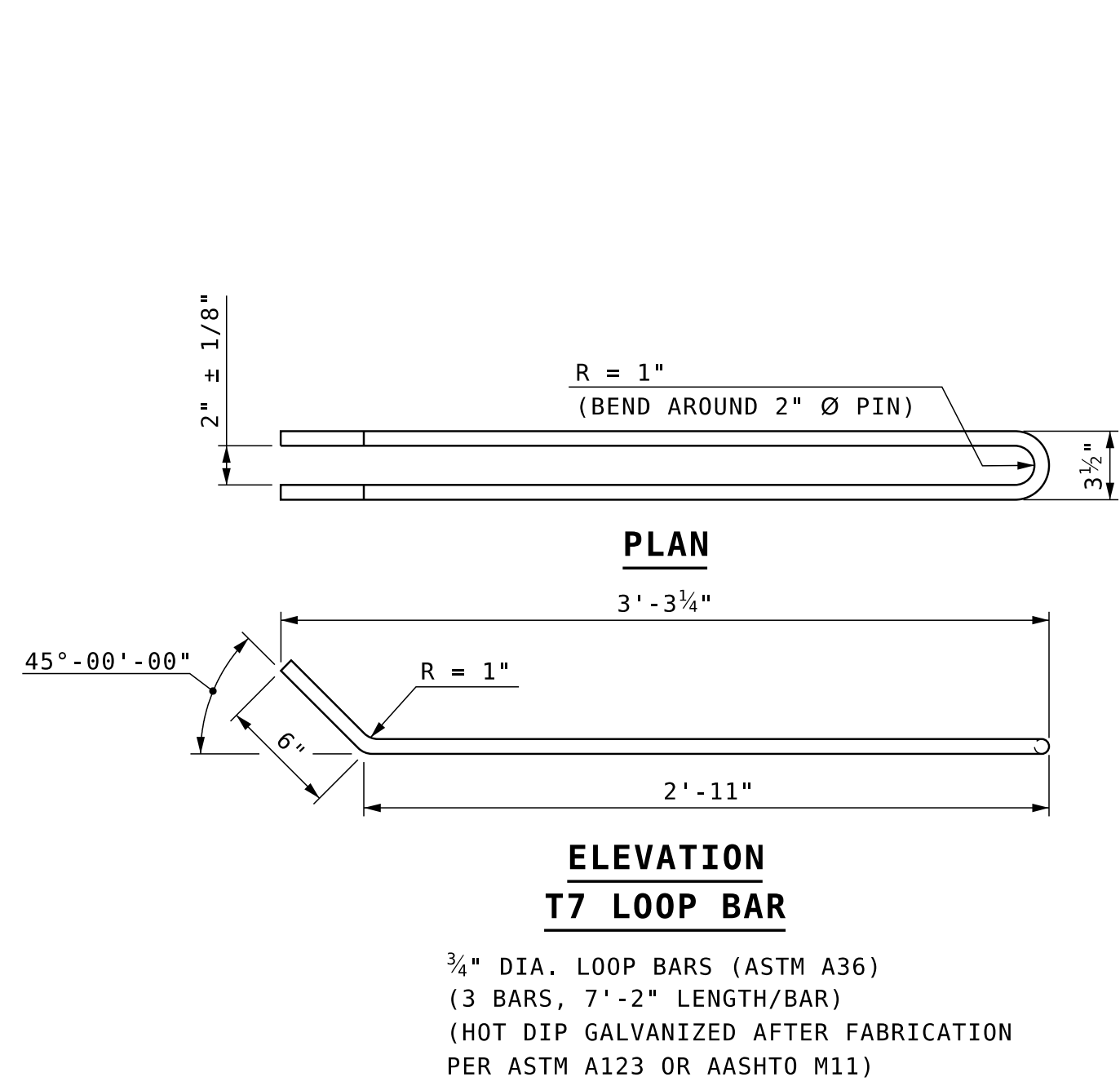
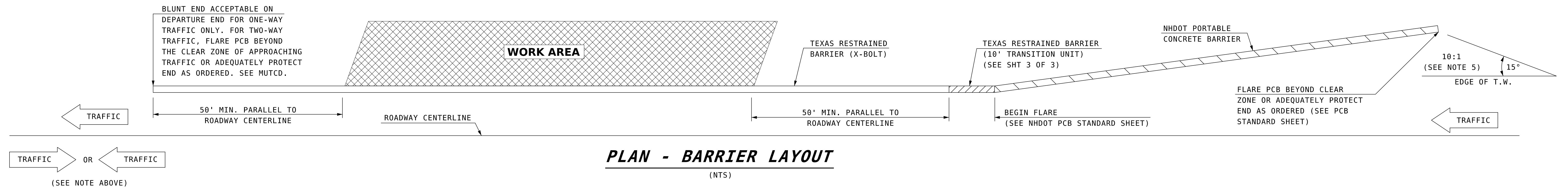
SCALE: 1 1/2" = 1'-0"

BARRIER WEIGHT APPROX. 2.38 TONS

NO MODIFICATIONS SHOULD BE MADE TO THIS SHEET

SUBDIRECTORY	.DGN LOCATOR	SHEET SCALE
TEMP BARRIER	X-BOLT BARRIER	AS NOTED

STATE OF NEW HAMPSHIRE									
DEPARTMENT OF TRANSPORTATION * BUREAU OF BRIDGE DESIGN									
TOWN		BRIDGE NO.			STATE PROJECT				
LOCATION									
PCB - TEXAS X-BOLT (1 OF 3)									
REVISIONS AFTER PROPOSAL		BY	DATE	BY	DATE	BRIDGE SHEET			
		NHDOT	4/20	NHDOT	4/20	XX OF			
		SMG	4/20	CHECKED	ABH	FILE NUMBER			
		XXX	XX/XX	CHECKED	XXX	XX/XX			
ISSUE DATE		6/1/20		FEDERAL PROJECT NO.		SHEET NO.		TOTAL SHEETS	
REV. DATE		XX/XX							



REBAR SCHEDULE TEXAS X-BOLT (10' BARRIER)

MK	QTY	LENGTH
T1	#5 17	5'-2"
T2	#5 2	4'-0"
T3	#5 19	2'-1"
T4	#5 8	9'-8"
T5	#6 8	3'-9"

REBAR SCHEDULE TRANSITION (10' BARRIER)

MK	QTY	LENGTH
T1	#5 11	5'-2"
T2	#5 1	4'-0"
T3	#5 12	2'-1"
T4	#5 8	9'-7"
T5	#6 4	3'-9"
T6	#4 10	3'-4"
T8	#5 2	4'-5"

NO MODIFICATIONS SHOULD BE MADE TO THIS SHEET

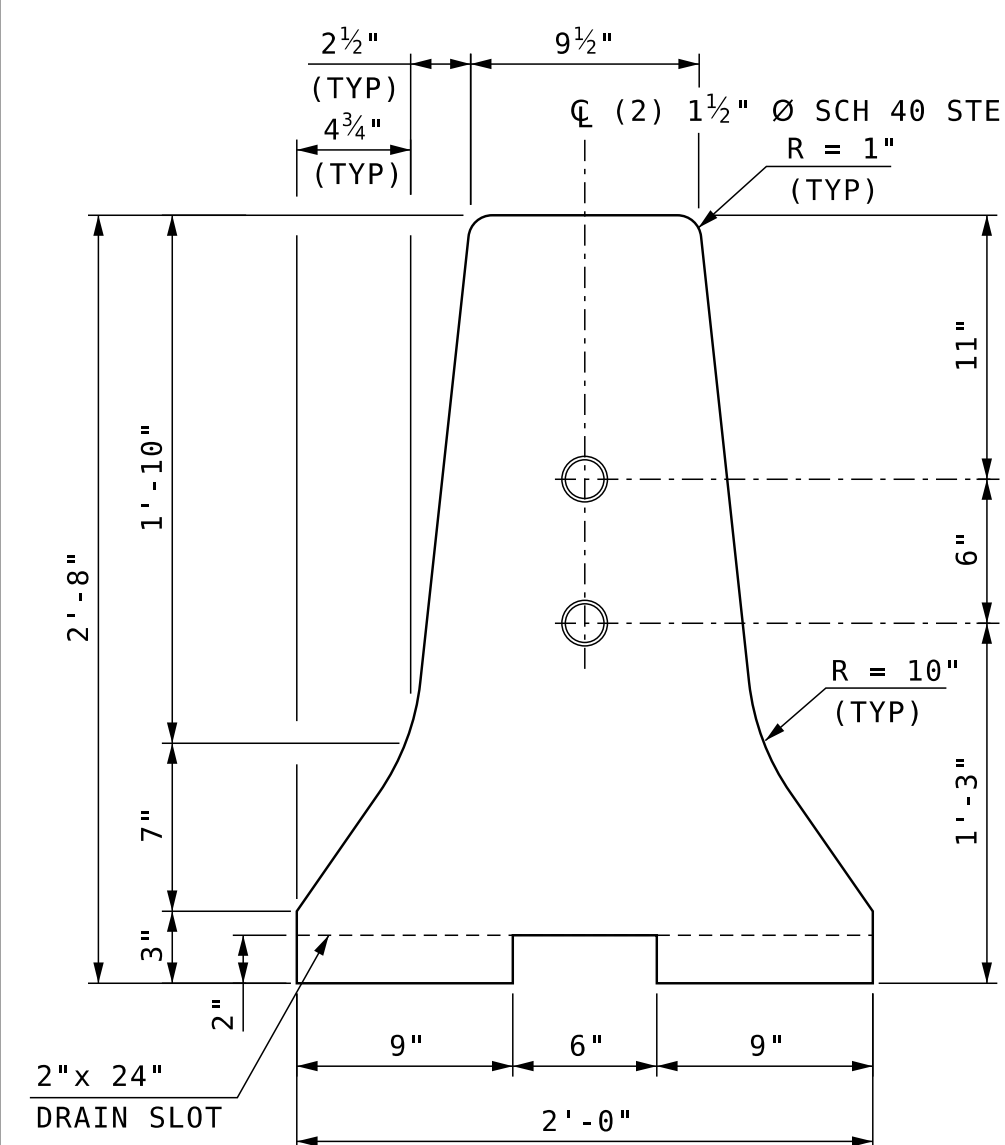
STATE OF NEW HAMPSHIRE DEPARTMENT OF TRANSPORTATION * BUREAU OF BRIDGE DESIGN

TOWN: BRIDGE NO. STATE PROJECT

PCB - TEXAS X-BOLT (2 OF 3)

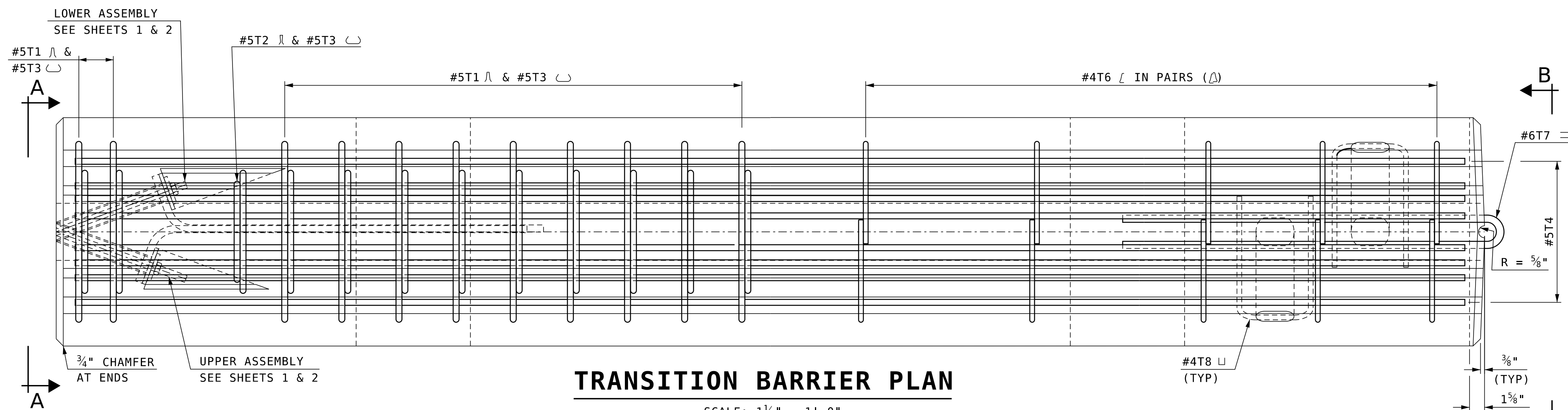
REVISIONS AFTER PROPOSAL	BY	DATE	CHECKED	BY	DATE	BRIDGE SHEET
	NHDOT	4/20		NHDOT	4/20	XX OF
	SMG	4/20		ABH	4/20	FILE NUMBER
	XXX	XX/XX		XXX	XX/XX	
	ISSUE DATE	6/1/20	FEDERAL PROJECT NO.	SHEET NO.	TOTAL SHEETS	
	REV. DATE	XX/XX				

SUBDIRECTORY: .DGN LOCATOR: SHEET SCALE: TEMP BARRIER: X-BOLT BARRIER AS NOTED



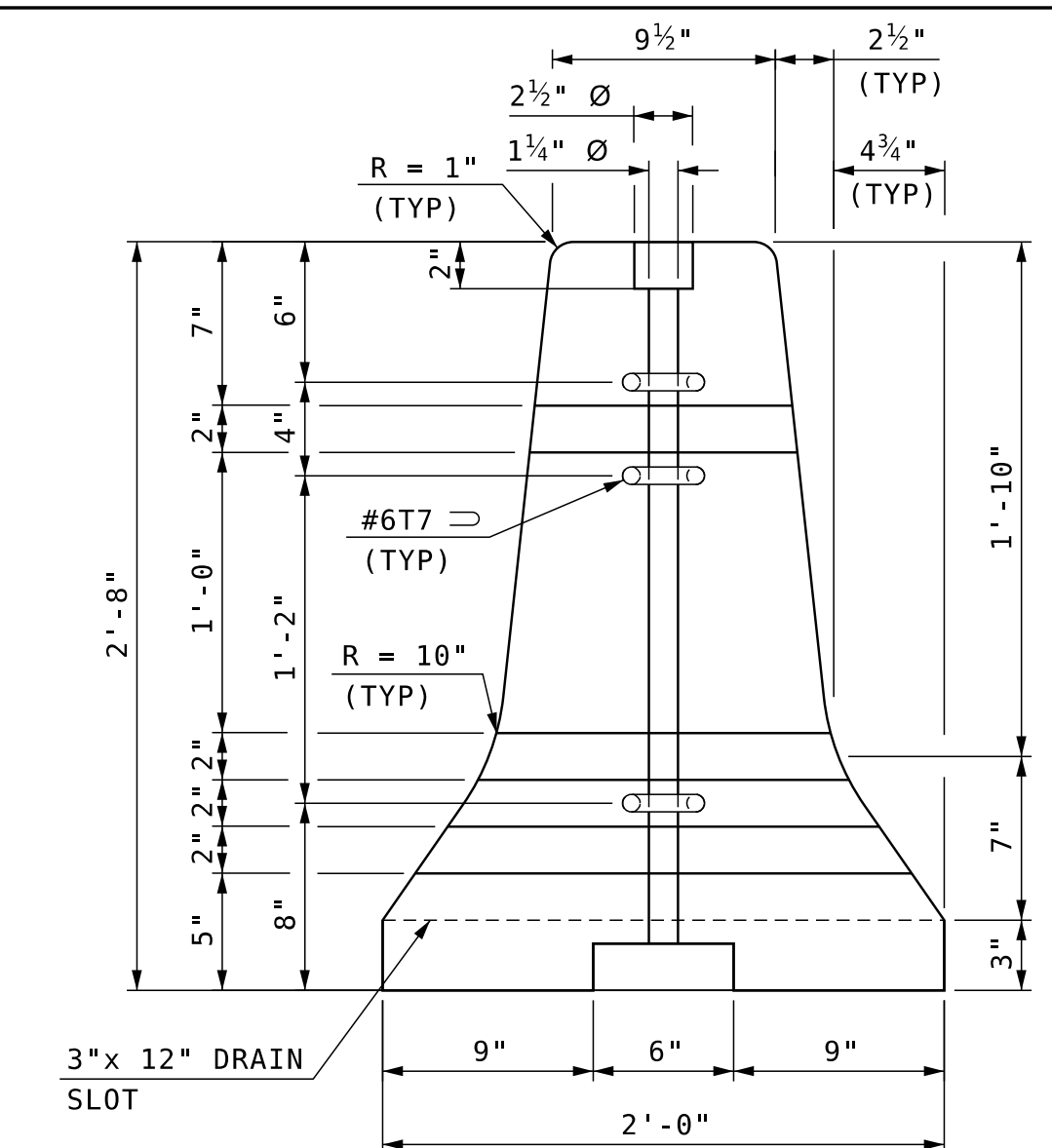
VIEW A-A

SCALE: 1 1/2" = 1'-0"



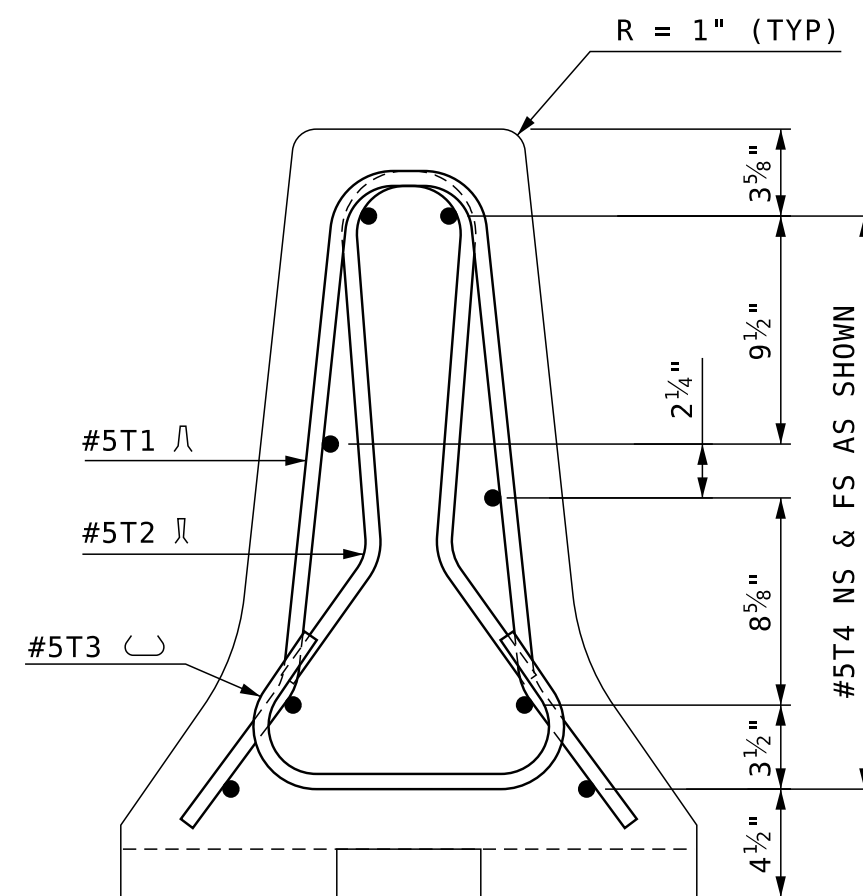
TRANSITION BARRIER PLAN

SCALE: 1 1/2" = 1'-0"



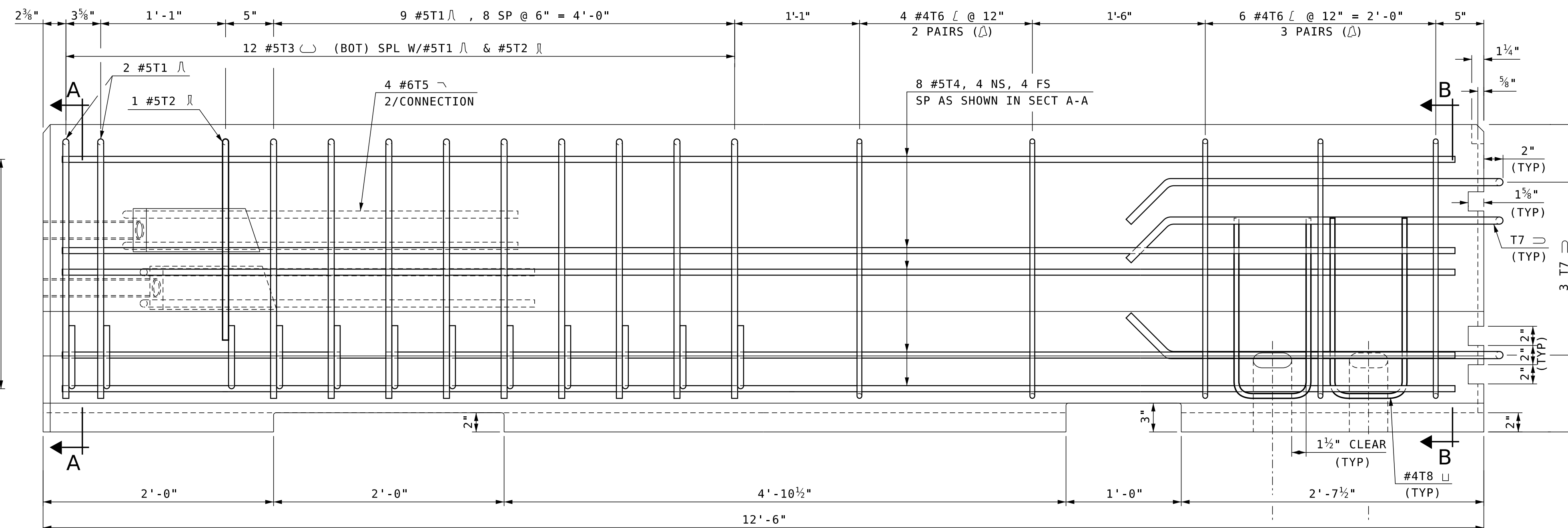
VIEW B-B

SCALE: 1 1/2" = 1'-0"



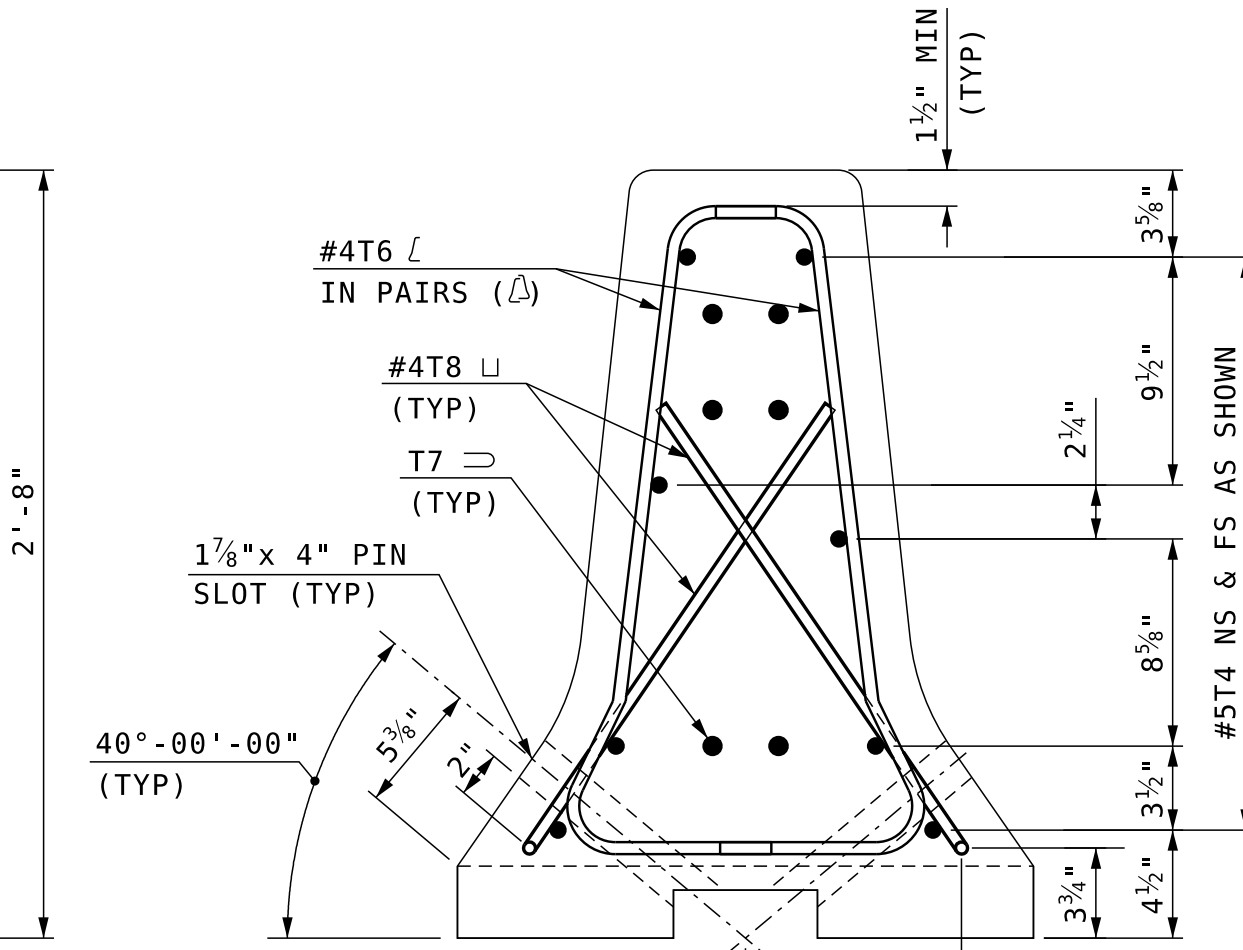
SECTION A-A

SCALE: 1 1/2" = 1'-0"



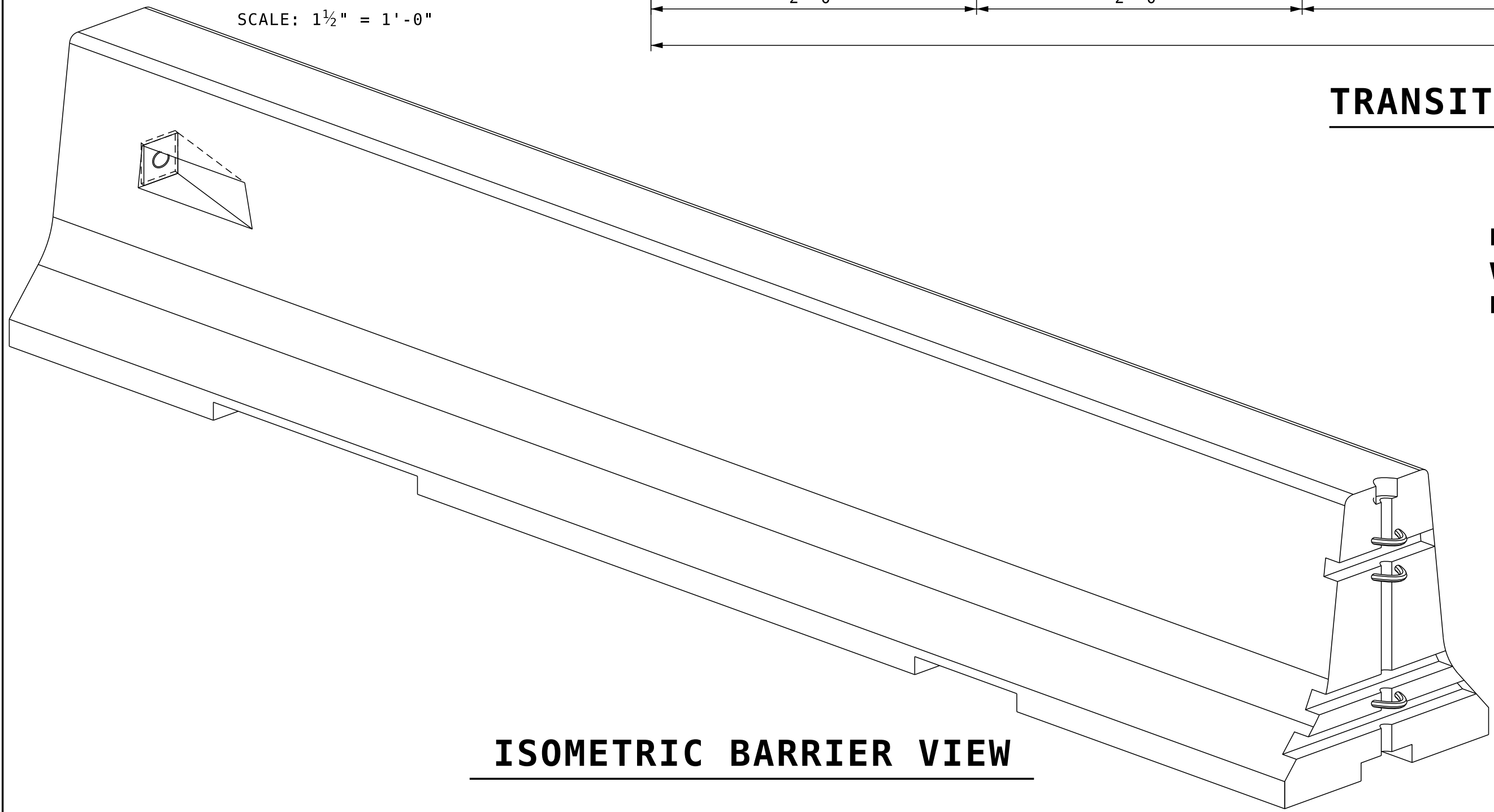
TRANSITION BARRIER ELEVATION

SCALE: 1 1/2" = 1'-0"



SECTION B-B

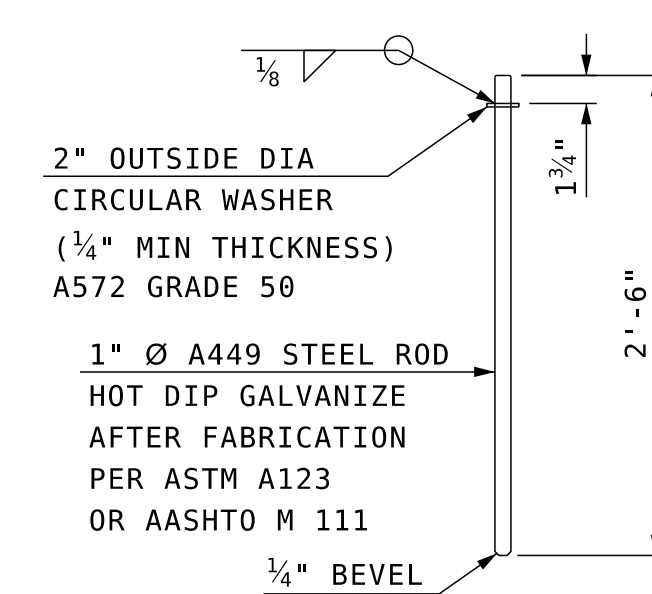
SCALE: 1 1/2" = 1'-0"



ISOMETRIC BARRIER VIEW

NOTE: TRANSITION PIECE FOR USE WITH HIGHWAY PCB STANDARD PLAN NO. GR-24 & 25 (MASH 16)

NO MODIFICATIONS SHOULD BE MADE TO THIS SHEET



LINKING PIN ASSEMBLY

SCALE: 1" = 1'-0"

NOTES

1. TEXAS RESTRAINED BARRIER (TRANSITION UNIT) SHALL BE PAID FOR UNDER ITEM 606.41741, PORTABLE CONCRETE BARRIER FOR TRAFFIC CONTROL (BRIDGE).
2. SEE SHEET 1 OF 3 FOR NOTES AND SHEET 2 OF 3 FOR REBAR SCHEDULE.

BARRIER WEIGHT APPROX. 2.84 TONS

STATE OF NEW HAMPSHIRE DEPARTMENT OF TRANSPORTATION * BUREAU OF BRIDGE DESIGN										
TOWN		BRIDGE NO.				STATE PROJECT				
LOCATION										
PCB - TEXAS X-BOLT (3 OF 3)										
REVISIONS AFTER PROPOSAL		BY	DATE	CHECKED	BY	DATE	BRIDGE SHEET			
		DESIGNED	NHDOT	4/20	CHECKED	NHDOT	4/20	XX OF		
		DRAWN	SMG	4/20	CHECKED	ABH	4/20	FILE NUMBER		
		QUANTITIES	XXX	XX/XX	CHECKED	XXX	XX/XX			
		ISSUE DATE	6/1/20	FEDERAL PROJECT NO.	SHEET NO.		TOTAL SHEETS			
		REV. DATE	XX/XX							

SUBDIRECTORY	.DGN LOCATOR	SHEET SCALE
TEMP BARRIER	X-BOLT BARRIER	AS NOTED