

NEW HAMPSHIRE DEPARTMENT OF TRANSPORTATION

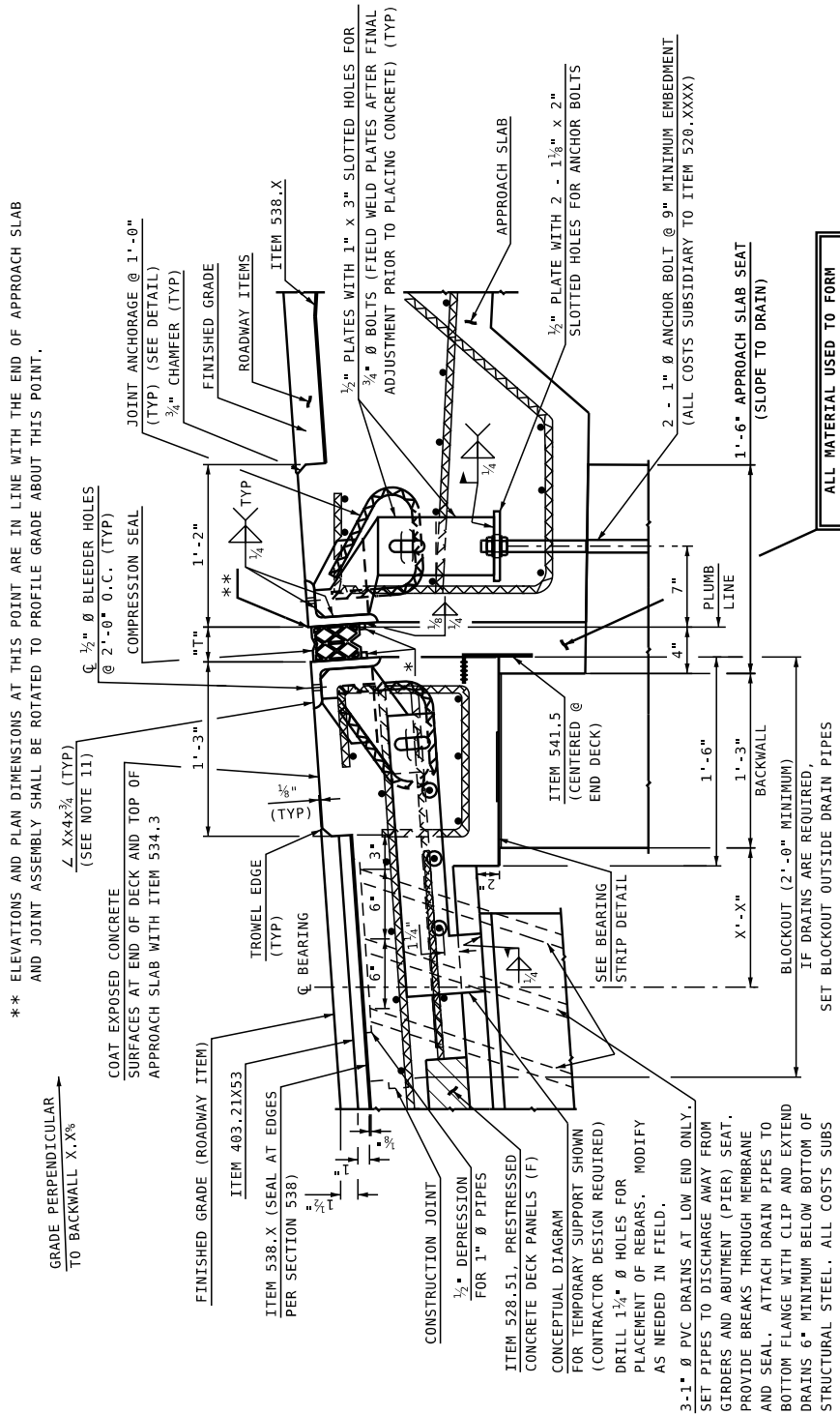


BUREAU OF BRIDGE DESIGN



DESCRIPTION: EXPANSION JOINT WITH PROFILE PERPENDICULAR TO BACKWALL - COMPRESSION SEAL - NEW CONSTRUCTION WITH PANEL

DATE REVISED:
7/31/2023



ALL MATERIAL USED TO FORM JOINT OPENING SHALL BE REMOVED

* 1/2" x 1/2" STOP BARS SHALL BE PLACED 'X' FROM TOP OF THE ANGLES TO TOP OF BARS

SECTION A-A

NOT TO SCALE

MODIFY TO FIT PROJECT

** ELEVATIONS AND PLAN DIMENSIONS AT THIS POINT ARE IN LINE WITH THE END OF APPROACH SLAB AND JOINT ASSEMBLY SHALL BE ROTATED TO PROFILE GRADE ABOUT THIS POINT.

GRADE PERPENDICULAR TO BACKWALL X.X%

Xx4x3/4 (TYP) (SEE NOTE 11)

COAT EXPOSED CONCRETE SURFACES AT END OF DECK AND TOP OF APPROACH SLAB WITH ITEM 534.3

FINISHED GRADE (ROADWAY ITEM)

ITEM 403-21X53

CONSTRUCTION JOINT
1/2" DEPRESSION FOR 1" Ø PIPES

ITEM 528-51, PRESTRESSED CONCRETE DECK PANELS (F) CONCEPTUAL DIAGRAM FOR TEMPORARY SUPPORT SHOWN (CONTRACTOR DESIGN REQUIRED) DRILL 1 1/4" Ø HOLES FOR PLACEMENT OF REBARS. MODIFY AS NEEDED IN FIELD.

3-1" Ø PVC DRAINS AT LOW END ONLY. SET PIPES TO DISCHARGE AWAY FROM GIRDERS AND ABUTMENT (PIER) SEAT. PROVIDE BREAKS THROUGH MEMBRANE AND SEAL. ATTACH DRAIN PIPES TO BOTTOM FLANGE WITH CLIP AND EXTEND DRAINS 6" MINIMUM BELOW BOTTOM OF STRUCTURAL STEEL. ALL COSTS SUBS TO ITEM 520-XXXX.

BLOCKOUT (2'-0" MINIMUM) IF DRAINS ARE REQUIRED, SET BLOCKOUT OUTSIDE DRAIN PIPES

BACKWALL 1'-3"

1'-6"

1'-6"

7"

4"

1'-6" APPROACH SLAB SEAT (SLOPE TO DRAIN)

2 - 1" Ø ANCHOR BOLT @ 9" MINIMUM EMBEDMENT (ALL COSTS SUBSIDIARY TO ITEM 520-XXXX)

1/2" PLATE WITH 2 - 1 1/8" x 2" SLOTTED HOLES FOR ANCHOR BOLTS

APPROACH SLAB

1'-2"

1'-3"

1'-0"

1'-2"

1'-3"

1'-3"

1'-3"

1'-3"

1'-3"

1'-3"

1'-3"

1'-3"

1'-3"

1'-3"

NEW HAMPSHIRE DEPARTMENT OF TRANSPORTATION

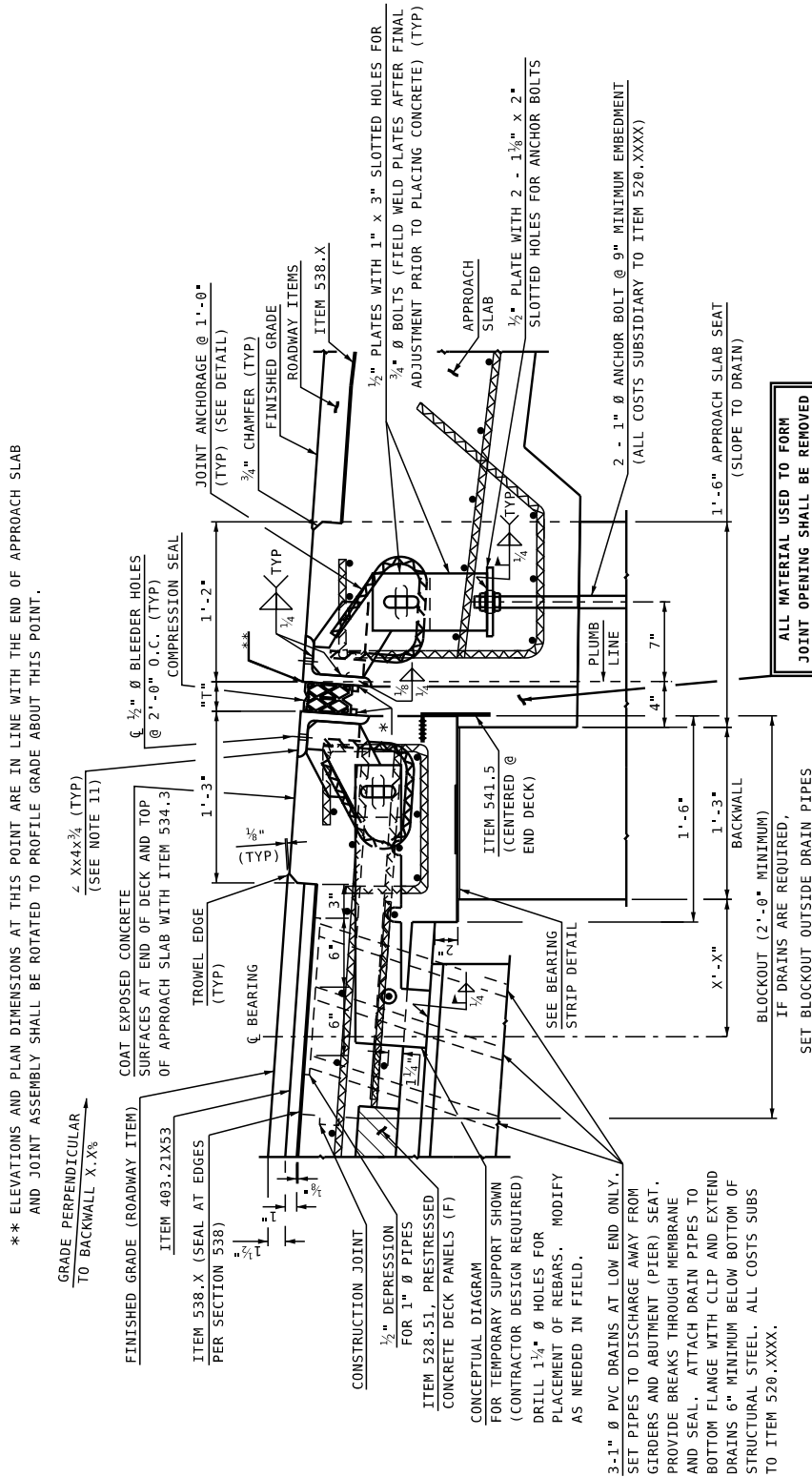


BUREAU OF BRIDGE DESIGN



DESCRIPTION: EXPANSION JOINT WITH PROFILE PERPENDICULAR TO BACKWALL - COMPRESSION SEAL - NEW CONSTRUCTION WITH PANEL

DATE REVISED: 7/31/2023



** ELEVATIONS AND PLAN DIMENSIONS AT THIS POINT ARE IN LINE WITH THE END OF APPROACH SLAB AND JOINT ASSEMBLY SHALL BE ROTATED TO PROFILE GRADE ABOUT THIS POINT.

GRADE PERPENDICULAR TO BACKWALL X-X'

ITEM 403.21X53 FINISHED GRADE (ROADWAY ITEM)
ITEM 538.X (SEAL AT EDGES PER SECTION 538)
ITEM 528.51, PRESTRESSED CONCRETE DECK PANELS (F)
ITEM 541.5 (CENTERED @ END DECK)ITEM 538.X (SEE SECTION 538)

COAT EXPOSED CONCRETE SURFACES AT END OF DECK AND TOP OF APPROACH SLAB WITH ITEM 534.3
TROWEL EDGE (TYP)
SEE BEARING STRIP DETAIL

CONSTRUCTION JOINT
1/2" DEPRESSION FOR 1" Ø PIPES
CONCEPTUAL DIAGRAM FOR TEMPORARY SUPPORT SHOWN (CONTRACTOR DESIGN REQUIRED) DRILL 1 1/4" Ø HOLES FOR PLACEMENT OF REBARS. MODIFY AS NEEDED IN FIELD.

3-1" Ø PVC DRAINS AT LOW END ONLY. SET PIPES TO DISCHARGE AWAY FROM GIRDERS AND ABUTMENT (PIER) SEAT. PROVIDE BREAKS THROUGH MEMBRANE AND SEAL. ATTACH DRAIN PIPES TO BOTTOM FLANGE WITH CLIP AND EXTEND DRAINS 6" MINIMUM BELOW BOTTOM OF STRUCTURAL STEEL. ALL COSTS SUBS TO ITEM 520.XXXX.

ALL MATERIAL USED TO FORM JOINT OPENING SHALL BE REMOVED

SECTION A-A

NOT TO SCALE

* 1/2" x 1/2" STOP BARS SHALL BE PLACED X" FROM TOP OF THE ANGLES TO TOP OF BARS

MODIFY TO FIT PROJECT

NEW HAMPSHIRE DEPARTMENT OF TRANSPORTATION

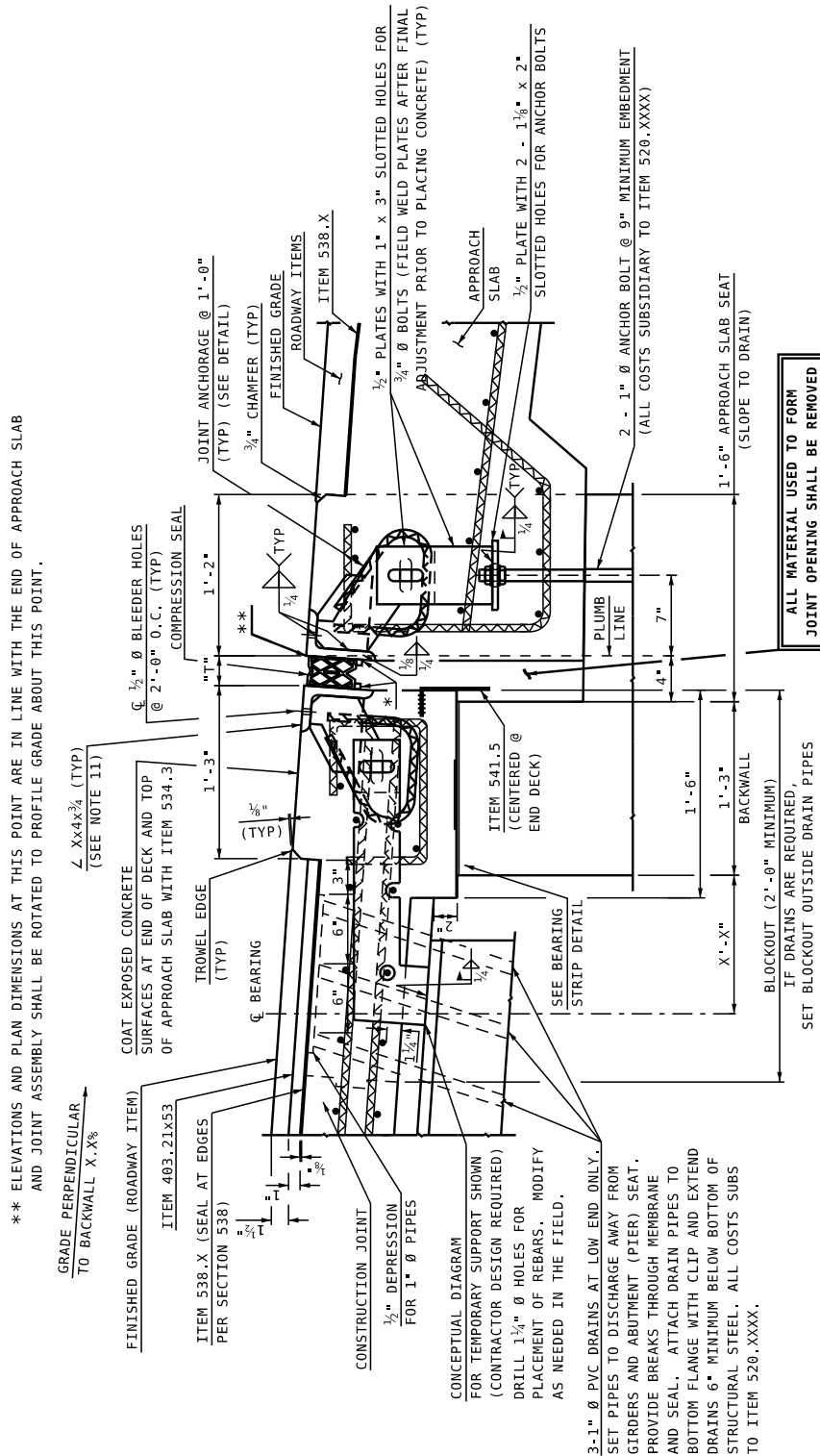


BUREAU OF BRIDGE DESIGN



DESCRIPTION: EXPANSION JOINT WITH PROFILE PERPENDICULAR TO BACKWALL - COMPRESSION SEAL - NEW CONSTR. CIP

DATE REVISED:
7/31/2023



SECTION A-A
NOT TO SCALE

ALL MATERIAL USED TO FORM JOINT OPENING SHALL BE REMOVED

* 1/2" x 1/2" STOP BARS SHALL BE PLACED X" FROM TOP OF THE ANGLES TO TOP OF BARS

MODIFY TO FIT PROJECT

NEW HAMPSHIRE DEPARTMENT OF TRANSPORTATION

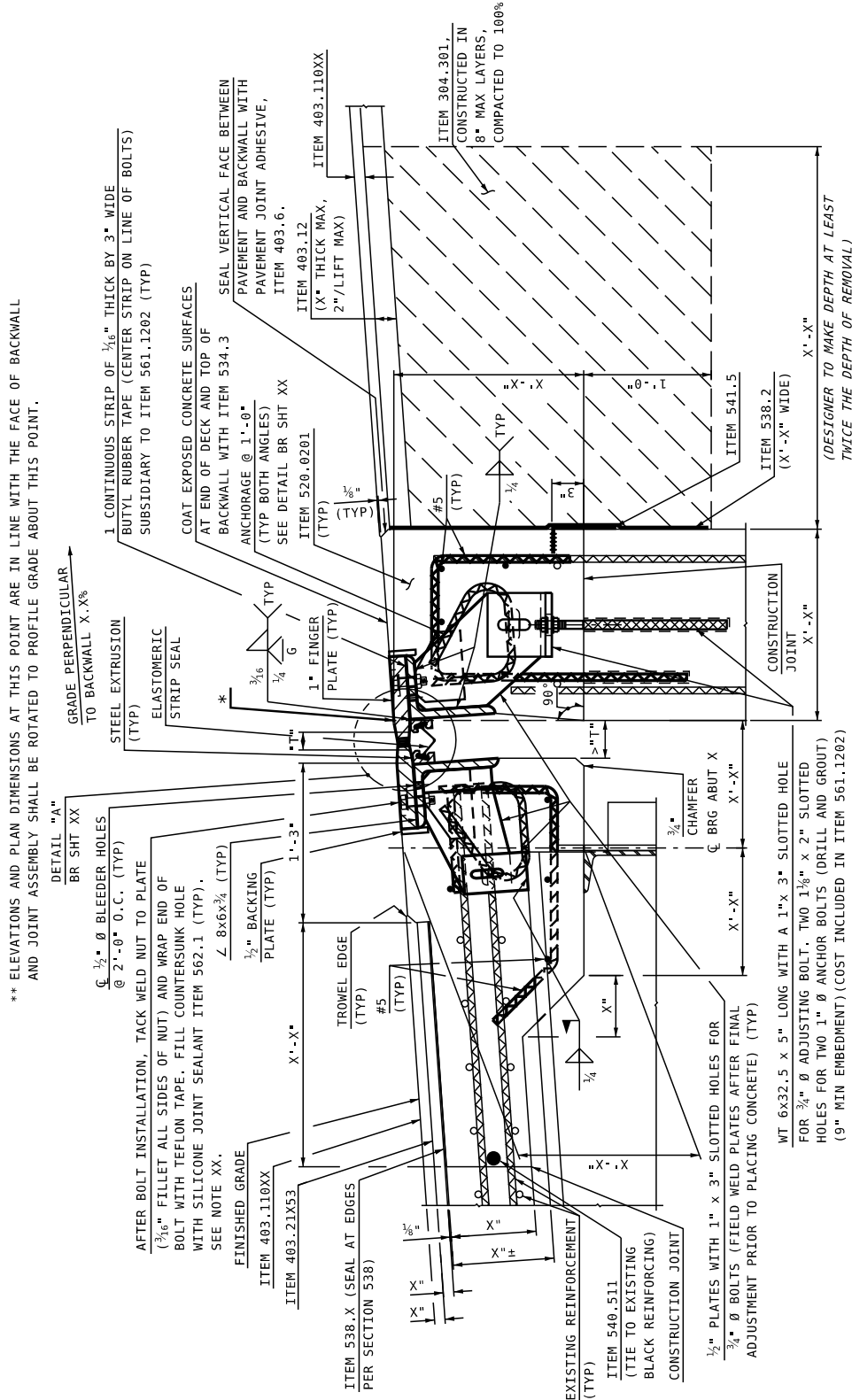


BUREAU OF BRIDGE DESIGN



DESCRIPTION: **EXPANSION JOINT WITH PROFILE - STRIP SEAL WITH PLOW PLATE - RECONSTRUCTION**

DATE REVISED: **7/31/2023**



MODIFY TO FIT PROJECT

SECTION A-A RECONSTRUCTION

NOT TO SCALE

