



FEBRUARY 2024

Letter of Interest
Statewide On-Call Construction Engineering & Inspection Services
Prequalified List of Consultants for Locally Administered Local
Public Agency (LPA) Qualifications-Based Selection Contracts

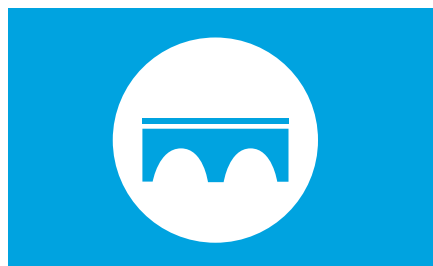
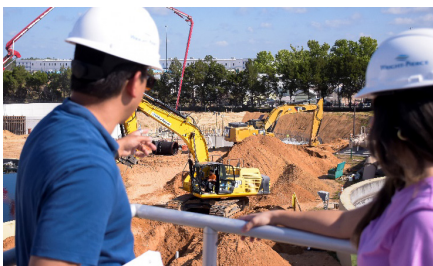
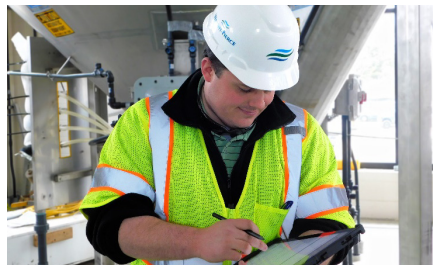
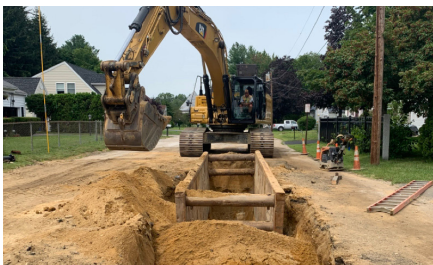


Table of Contents

SECTION 1 1 page	Introduction Letter Letter of Interest Overview	1 – 1
SECTION 2 2 pages	Project Understanding & Approach Introduction Project Management Project Communication	2 – 1 2 – 1 2 – 2
SECTION 3 1 page	Organizational Chart Identification of Project Manager Project Team Organization	3 – 1 3 – 1
SECTION 4 2 pages	Project Team Project Team Introduction Team Overview Table	4 – 1 4 – 2
SECTION 5 1 page	References Client References	5 – 1
APPENDIX A 5 pages	Resumes Resumes of Key Personnel	
APPENDIX B 5 pages	Applicable Work Experience Firm Overview Experience Summary Project Case Studies	

This Letter of Interest adheres to page requirements set forth in the solicitation for Letters of Interest.



January 26, 2024

Tobey Reynolds, PE
Assistant Director of Project Development
Chairperson, Consultant Selection Committee
7 Hazen Drive, PO Box 483, Concord, NH 03302

**SUBJECT: Statewide On-Call Construction Engineering and Inspection Services
Prequalified List of Consultants for locally administered Local Public Agency (LPA)
Qualifications-Based Selection Contracts**

Dear Mr. Reynolds,

The state of New Hampshire, like many New England states, is relying on transportation infrastructure that is aging at a rapid pace. The New Hampshire Department of Transportation (NHDOT) partners with municipalities through the LPA process to maintain this infrastructure, and Wright-Pierce can assist. Wright-Pierce is a full-service civil and environmental engineering firm with a staff of over 300 engineers and construction services personnel with a seasoned track record you can count on. Since 1947, Wright-Pierce has been assisting municipalities in New Hampshire with their civil infrastructure needs. Working with Wright-Pierce offers the following benefits:

- **Local New Hampshire personnel** dedicated to providing highly responsive service to the NHDOT and municipalities.
- **Approach to on-call contracts** with well-defined workflows for managing task orders.
- **Experience** with New Hampshire's infrastructure systems and with similar projects for clients throughout the state.
- **In-house inspectors** to perform on-site observation of the construction process. We have access to over 75 in-house and contract resident inspectors.

Wright-Pierce Project Manager Jason Gallant, PE, is NHDOT LPA certified and well known in the New England infrastructure design and construction community having led over 50 successful projects for New Hampshire municipalities. Jason will be the point of contact for projects assigned under this contract, so please reach out to him should you have questions or require additional information. Principal-in-Charge, Ryan Wingard, is an authorized representative of Wright-Pierce and will commit staff and corporate resources for this contract.

Sincerely,

WRIGHT-PIERCE



Ryan T. Wingard, PE
Vice President, Principal-in-Charge
ryan.wingard@wright-pierce.com
207.523.1419



Jason L. Gallant, PE
Project Manager
jason.gallant@wright-pierce.com
603.570.7166

2

Introduction

Wright-Pierce is well versed in the New Hampshire Department of Transportation (NHDOT) Local Project Agency (LPA) process requirements during the construction phase for project management, on-site project inspection, construction administration, project documentation, and materials testing. Our Project Manager, Jason Gallant, also has direct experience with the Federal Transportation Alternatives Program (TAP), Federal Congestion Mitigation Air Quality Program (CMAQ), Federal Municipal Owned Bridge Program (MOBRR), and other federal aid funds including the State Bridge Aid (SBA) program.

Wright-Pierce views our role in construction as partnering with owners and stakeholders to help work within each contractor's means and methods to deliver successful projects. Successful projects are those that are completed in a timely manner, in accordance with NHDOT specifications, and in accordance with the LPA processes for project execution and contractor labor compliance. Dedicated staff in the state of New Hampshire with offices in Bedford and Portsmouth, as well as over 75 construction engineering and inspection services professionals, promote the customer service and quality that municipal clients deserve.

Project Management

Wright-Pierce is committed to the facilitation of a proper kick-off to project construction and to monitoring progress through the life of the project. This monitoring allows our team to assign the proper staff for inspection services, be responsive to contractor requests for information or clarification, anticipate and plan for testing, and coordinate with the owner and stakeholders on the progress of work.

On-Site Project Observation

Wright-Pierce will observe the progress and quality of the work of the contractor on a full-time basis to confirm work is in general conformance with the contract documents and subject to necessary approved revisions during construction:

- Reconciliation of completed quantities per pay item with the contractor on a weekly basis.
- Verify conformance with design intent, property rights agreements; erosion and sediment control requirements; stormwater management plan; and state/federal permits and regulations.
- Maintain a photographic record of the progress of construction, annotating such photos to indicate their content and context including date.



Wright-Pierce engineers often stay involved through the construction phases of projects they design, helping to enhance continuity of goals and vision. Keen knowledge of the LPA design process positions us well to serve the NHDOT and municipalities for construction phase services.

- Participate in biweekly construction status meetings with the contractor and owner.
- Immediately report any unusual occurrences and observed accidents occurring within the project limits to the owner.
- Develop Record Drawings at project completion.

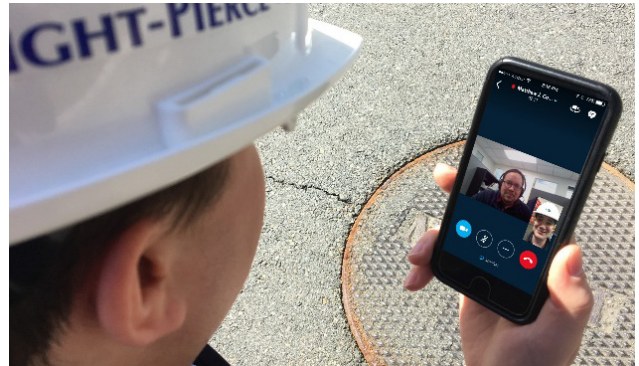
Construction Administration

Wright-Pierce will provide construction administration based on the nature of the work:

- Review required shop drawings or material submittals.
- Check that the materials submitted have been approved and meet the plans and contract specifications.
- Receive certificates, computations, and reference materials submitted by the contractor.
- Issue necessary interpretations and clarifications of the contract documents prior to the start of work.
- Make recommendations relating to submittals, the acceptability of the work, work schedules, and coordination with the municipality and other stakeholders as needed.
- Meet with municipal personnel as needed for technical job briefings, public informational reports, and stakeholder coordination.

Project Documentation

Wright-Pierce will keep clear records of compliance with the NHDOT Office of Federal Compliance (OFC) including review of weekly certified payrolls, worker interviews for verification of rate and classification, wage requests and determinations for new labor categories as needed to complete the project, and payment requisitions with recommendations to the municipality for payment based on observed completion of work compared to contractor supplied data and schedules.



Video communications are leveraged across all of our locations, linked to computer, tablet, and phone. Tools like Microsoft Teams bring us together, no matter where we are.

Materials Testing

Wright-Pierce will coordinate and conduct reviews of testing by third parties and or subconsultants to decide if the contractor's work is in accordance with quality control and assurance criteria outlined in the contract documents.

Project Communication

Wright-Pierce has invested significantly in technology to minimize the "virtual distance" among our employees and support an integrated and connected staff, no matter their location. Considering the precautions being taken in response to the ongoing COVID-19 situation, this ability to collaborate remotely has become even more important.

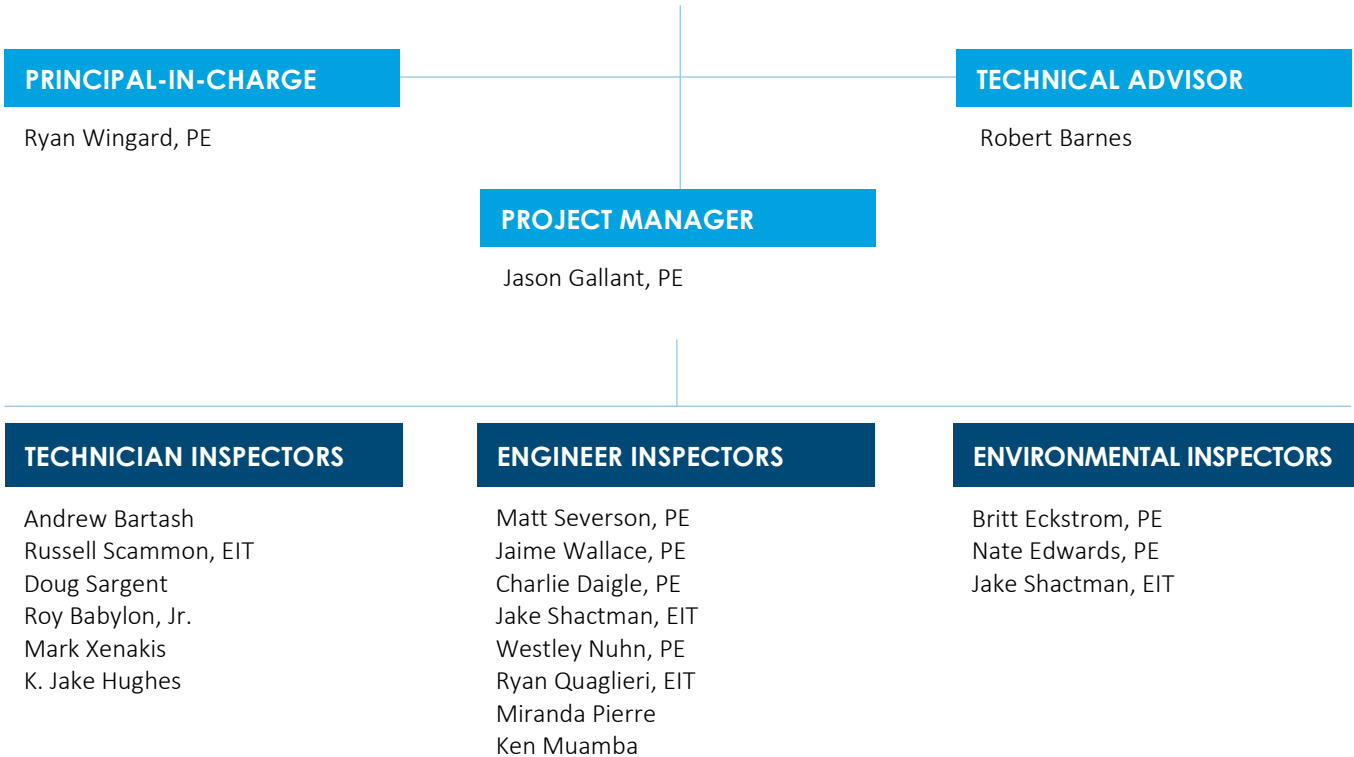
Our robust interoffice and remote communications infrastructure is central to better serving our clients during this time. While our project engineers remain prepared and available to conduct field visits and other in-person activities, our professionals' daily work is unimpeded by social distancing. Regardless of current work locations, employees are equipped with the ability to store, share, and access files and information on the company's cloud-based network, facilitating continued collaboration and resource management. The array of communication technologies available to our team includes Morro Data, Skype, Bluebeam, and Microsoft Office 365.

3

Our Team Dedicated to Your Project

From our full-service, diverse staff of experienced engineering professionals, technicians, and support personnel, we have assembled a project team with many years of demonstrated practical experience completing similar projects. To find the best solution, working together as a team will be essential, and our team is committed to working with you.

Jason Gallant, PE will be your dedicated Project Manager for this contract. He has 27 years of experience working on transportation projects and has direct experience working with NHDOT and New Hampshire municipalities. Read more about the team in the following section and in Appendix A of this submittal.



4

Introducing Our Key Team Members

The following introductions describe our Project Manager and Technical Advisor for this contract and explain:

- Role and responsibilities for this contract
- General qualifications as they relate to this contract
- A synopsis of specific experience that helps them add value to this contract

Additional information about key team members and their experience can be found in their resume in an appendix to this submittal.



Wright-Pierce team members typically participate through all phases of a project to ensure continuity, effective implementation of original concepts, and overall success.



Experience: 27 years
Joined Firm: 2021
Professional Licenses: NH, ME, VT, MA, CT, RI, PA
NHDOT LPA Certified #1115

Project Manager: Jason Gallant, PE

Jason has over two decades of progressive experience in transportation infrastructure engineering throughout the Northeast and will leverage this experience in his role as Project Manager. As Project Manager, he will be the primary point of contact for communications with the NHDOT. He will be responsible for coordinating the technical efforts of the project team and for monitoring schedule and budget compliance. His engineering expertise includes design, analysis, and construction of new and rehabilitated bridges and other highway, railroad, and building structures under design-build and design-bid-build project delivery methods. Jason offers strong knowledge of bridge and building design standards throughout the Northeastern U.S. and has successfully designed many DOT, municipal, commercial, and institutional structures using reinforced concrete, prestressed concrete, structural steel, and timber.



Experience: 31 years
Joined Firm: 1992

Technical Advisor: Robert Barnes

Bob will serve as Technical Advisor, providing technical advice to the project team and reviews of construction documents. He will also assist with ensuring that our QA/QC program is implemented and will be a QC reviewer. Bob is an environmental technical specialist and process design technical leader at Wright-Pierce. He manages the Firm's construction services division, responsible for the staffing, training, and coordination of Wright-Pierce's resident inspection field services personnel who oversee in excess of 100 projects annually. He will assign resident project representatives to projects assigned under this contract to provide construction inspection services. Bob is also the Firm's Operations Manager, where he leverages his experience in the water and wastewater industry for the planning, directing, and operations oversight of Wright-Pierce's building and process design groups.

Construction Engineering & Inspection Services in Support of LPA Projects

Key Personnel	Project Role	Years of Experience	Years with Firm	Technician Inspector – Level I	Technician Inspector – Level II	Technician Inspector – Level III	Engineer Inspector – Level I	Engineer Inspector – Level II	Engineer Inspector – Level III	Project Manager/Con. Eng. of Record	Environmental Inspector	NH Licensed Professional Engineer	CESSWI Certified	CPESC Certified	NETTCP Certified	LPA Certified ¹
Jason Gallant, PE	Project Manager	27	3					•		•		•				•
Robert Barnes	Technical Advisor	31	31		•											
Ryan Wingard, PE	Principal-in-Charge	27	16							•		•		•		
Andrew Bartash	Technician Inspector	19	3		•											
Russell Scammon, EIT	Technical Inspector	9	9		•											
Doug Sargent	Technician Inspector	52	6		•											
Roy Babylon, Jr.	Technician Inspector	40	39		•											
Mark Xenakis	Technician Inspector	32	3		•											
K. Jake Hughes	Technician Inspector	30	17		•											
Matt Severson, PE	Engineer Inspector	37	2					•		•		•				
Jaime Wallace, PE	Engineer Inspector	9	7					•								•
Charlie Daigle, PE	Engineer Inspector	9	6					•							•	•
Jake Shactman, EIT	Engineer Inspector	4	4				•									
Westley Nuhn, PE	Engineer Inspector	7	1					•								•
Ryan Quaglieri, PE	Engineer Inspector	1	1				•									
Miranda Pierre	Engineer Inspector	1	1				•									
Ken Muamba	Engineer Inspector	1	1				•									
Britt Eckstrom, PE	Environmental Inspector	20	5								•	•				•
Nate Edwards, PE	Environmental Inspector	6	5								•				•	

¹ Jaime Wallace and Charlie Daigle hold their LPA certifications in Maine.

5

References

Client References

The following are references of clients for whom we have provided similar services to your proposed project. We have completed projects for these clients within the last five years. These contacts are familiar with Wright-Pierce, know our work ethic, and can speak to the services we provide. Please contact them and ask about our:

- Responsiveness
- Sensitivity to local goals and objectives
- Adherence to scope, schedule, and budgets
- Attention to detail
- Ability to work with committees and stakeholders
- Effectiveness in dealing with regulatory agencies
- Technical knowledge

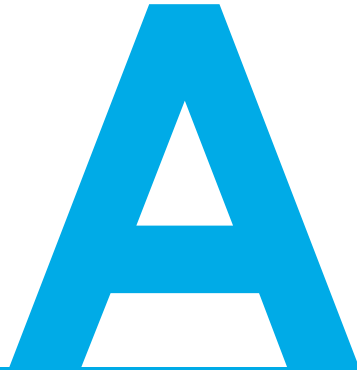


The references below will be able to share candid opinions regarding the quality of service that has been provided by Wright-Pierce.

Client References

Reference	Contact	Project Relevance
City of Dover 271 Mast Road Dover, NH 03820	John Storer Director of Community Services 603.516.6450 j.storer@dover.nh.gov	<ul style="list-style-type: none"> • Working for City since 2010 • Roadway and utility infrastructure improvements • Project case study provided in Appendix B
City of Somersworth 18 Lilac Lane Somersworth, NH 03878	Michael Bobinsky Director of Public Works and Utilities 603.692.4266 mbobinsky@somersworth.com	<ul style="list-style-type: none"> • Working for City since the 1980s • Roadway infrastructure improvements • Project case study provided in Appendix B
City of Rochester 45 Old Dover Road Rochester, NH 03867	Peter Nourse Director of City Services 603.332.4096 peter.nourse@rochesternh.net	<ul style="list-style-type: none"> • Working for City since the 1990s • Roadway and culvert replacement • Project case study provided in Appendix B
Town of Old Orchard Beach 1 Portland Avenue Old Orchard Beach, ME 04064	Diana Asanza Town Manager 207.937.5628 Dasanza@oobmaine.com	<ul style="list-style-type: none"> • Working for Town since the 1990s • Roadway and culvert replacements • Multiple stormwater and drainage projects

APPENDIX





Jason Gallant, PE

Project Manager

Jason has over two decades of progressive experience in transportation infrastructure engineering throughout the Northeast and will leverage this experience in his role as Project Manager. His engineering expertise includes design, analysis, and construction of new and rehabilitated bridges and other highway, railroad, and building structures under design-build and design-bid-build project delivery methods. Jason offers strong knowledge of bridge and highway design standards throughout the Northeastern U.S. and has successfully designed many DOT, municipal, commercial, and institutional structures using reinforced concrete, prestressed concrete, structural steel, and timber. **He has managed single bridge projects in New England with construction value up to \$73 million.** He has completed several similar projects including:

- Project Manager and Engineer of Record for over 50 Municipal Bridge Projects in New Hampshire
- Statewide On-Call Bridge Design Services, NHDOT, Various Locations in NH
- I-93 Salem-Manchester Final Design, NHDOT, Salem and Windham, NH
- Conway Bypass Phase 4B, 6, 7A, 7B, NHDOT, Albany, Conway, Madison, NH

Technical Advisor

Bob is an environmental technical specialist and process design technical leader at Wright-Pierce. He manages the Firm’s construction services division, responsible for the staffing, training, and coordination of Wright-Pierce’s resident inspection field services personnel who oversee in excess of 100 projects annually. He will assign resident project representatives to projects assigned under this contract to provide construction inspection services.

- Technical Oversight for Construction, Exeter, NH
- Technical Oversight for Construction, Hampton, NH
- Technical Oversight for Construction, Manchester, NH
- Technical Oversight for Construction, Claremont, NH
- Technical Oversight for Construction, Berlin, NH
- Technical Oversight for Construction, Jaffrey, NH
- Technical Oversight for Construction, Sunapee, NH



Robert Barnes, PE

Education

M.S., Civil Engineering, Structural Focus, Northeastern University

B.S., Civil Engineering, University of New Hampshire

Experience

27 years

Joined Firm

2021

Professional Licenses

Professional engineer in NH, ME, CT, FL, MA, PA, RI, VT and **NHDOT LPA certified #1115**

Education

Architectural Certificate, Southern Maine Technical College

Experience

31 years

Joined Firm

1992



Ryan Wingard, PE

Principal-in-Charge

Ryan is the firm’s Civil Practice Group Leader. He has 27 years of water resources-related experience including stormwater system design, watershed characterization, wastewater system design, and project management. Ryan’s specialties center on hydrology and hydraulics as they pertain to stormwater, watershed, wastewater, and CSO systems, including dams. His in-depth knowledge of hydrologic and hydraulic systems is an asset for any water resources related project.

- Street and Utility Reconstruction Projects, Lebanon, NH
- Roadway and Utility Reconstruction, Somersworth, NH
- Street Reconstruction and Drainage, Dover, NH
- Culvert Replacement, Newmarket, NH
- Garrison Lane and Linden Street Bridges, Exeter, NH

Education

M.S., Civil Engineering, Wayne State University

B.S., Civil and Environmental Engineering, University of Michigan

Experience

27 years

Joined Firm

2007

Professional Licenses

NH, ME, VT, MA, CT, RI, MI, FL



Andrew Bartash

Technician Inspector

Andy has experience in various phases of project design, project execution, environmental strategies, and field work. He is experienced in building and installation, grade confirmation, material deliveries, estimating and bidding, local and state regulations, specifications, coordination, and heavy equipment operation.

- Steel Galvanized Culvert Installation, Rangeley, ME
- French Drains, Farmington, ME
- Drainage Ditching, Rangeley, ME
- Paver Walkway Installations, Farmington/Rumford, ME
- Retaining Wall Installation, Rumford/Farmington, ME

Education

B.A., Business Economics, University of Maine

Experience

19 years

Joined Firm

2021



Doug Sargent

Technician Inspector

Doug has over 52 years of experience in related services including local administration, design, construction, and management. In his position as resident project representative, he has been responsible for the observation of contractors and keeping detailed daily records such as daily reports and field books, tracking quantities, and reviewing monthly payment requisitions.

- Granite Road Bridge Replacement, Ossipee, NH
- NH RT 108 Utility Replacement, Newmarket, NH
- Manning Street Utility Rehabilitation, Hudson, MA

Education

B.S., Worcester Polytechnic Institute

Experience

52 years

Joined Firm

2017



Roy Babylon, Jr.

Technician Inspector

Roy has nearly four decades of experience providing construction inspection and engineering technician support for civil and environmental engineering projects throughout New England.

- Multiple Roadway Projects, Rochester, NH
- Street Reconstruction and Water Main Installation, Wolfeboro, NH
- Site Development, Portsmouth, NH
- Highway Improvement, State of New Hampshire Interchange Upgrade, Durham, NH

Education

A.S., Architectural Engineering Technology, New Hampshire Technical Institute

Experience

40 years

Joined Firm

1984



Mark Xenakis

Technician Inspector

Mark’s experience includes construction of parking area, roads, and highways for commercial and public utilities. As a resident project representative, he is responsible for interpreting plans and specifications, reviewing schedules, cost estimates/change orders, payment requisitions, budgets, shop drawings, property claims, construction plans, and details and specifications.

- Expansion of Rt. 106, Belmont, NH
- Route 3 reconstruction, Tilton, NH
- Road Upgrade and Parking Lot Expansion, Leon Cty, TX

Education

B.A., Economics, Rollins College

Experience

32 years

Joined Firm

2020



K. Jake Hughes

Technician Inspector

Jake has over 30 years’ experience in construction supervision of roads, bridges, dams, water and wastewater treatment plants, pump stations, as well as construction oversight and operation of sewers, water mains, pump stations, and various civil/infrastructure projects throughout the Northeast.

- Street and Utility Reconstruction Projects, Lebanon, NH
- Blackstone Brook Bridge, Blanchard, ME
- Site Development, Canton, ME
- Second Roach Dam, Shawtown TWP, ME

Experience

30 years

Joined Firm

2006



Matt Severson, PE

Engineer Inspector

Matt has 37 years of experience in various phases of project design, project execution, environmental strategies, and field work. He is a forward-thinking, versatile engineering professional with a proven track record of leading diverse teams designing and constructing complex projects.

- Municipal Bridge Replacements, NH
- NH RT 16 Conway Bypass, Conway, NH
- South Willow Street Bridge, Manchester, NH

Education

B.S., Civil Engineering, Michigan Technological University

Experience

37 years

Joined Firm

2022



Jaime Wallace, PE

Engineer Inspector

Jaime has experience on a wide variety of civil projects including bridge and culvert inspection repair and replacement. His responsibilities have included design, permitting, scheduling, and construction monitoring on both public and private sector development projects. He has a strong background in erosion control and maintenance, as well as quality control inspections.

- Street Reconstruction and Drainage, Dover, NH
- Pulcifur Road Culvert Replacement, Mapleton, ME
- Hampshire Road Culvert Replacement, Brownfield, ME
- Old Ferry Road Culvert Replacement, Wiscasset, ME

Education

B.S., Civil Engineering and Environmental Engineering, University of Maine

Experience

9 years

Joined Firm

2016

Professional Licenses

Professional engineer in ME and **MaineDOT LPA certified**



Charlie Daigle, PE

Engineer Inspector

Charlie has experience on a wide variety of civil projects. His responsibilities have included design, permitting, and construction administration within the public and private sectors. He is proficient in hydraulic and hydrologic modeling via HEC-RAS, HydroCAD, InfoSWMM, SSA, pipeflo, and AutoCAD Civil 3D.

- Street and Utility Reconstruction Projects, Lebanon, NH
- Roadway and Utility Reconstruction, Somersworth, NH
- Riverwalk and Sewer Separation, Biddeford, ME
- Corcoran’s Pond Dam Embankment Armoring, Waterville Valley, NH

Education

B.S., Civil Engineering, University of Maine

Experience

9 years

Joined Firm

2017

Professional Licenses

Professional engineer in ME and **MaineDOT LPA certified**



Jacob Shactman, EIT

Environmental Inspector

Jacob is experienced in environmental permitting, site design, hydrologic and hydraulic modelling, erosion and sediment control, and stormwater management. He is experienced in AutoCAD Civil 3D, Storm and Sanitary Analysis, HEC-RAS, and HydroCAD.

- Street and Utility Reconstruction Projects, Lebanon, NH
- Roadway and Utility Reconstruction, Somersworth, NH
- Street Reconstruction and Drainage, Dover, NH
- Mt. Agamenticus Parking Lot Improvements, York, ME
- Red Fox Crossing Culvert Replacement, Hillsborough, NH

Education

B.S., Civil and Environmental Engineering, University of Massachusetts Amherst

Experience

4 years

Joined Firm

2019

Professional License

Engineer-in-Training



Britt Eckstrom, PE

Environmental Inspector

Britt has more than 20 years of experience in consulting engineering working on a wide variety of civil and environmental projects, including roadway, water system, wastewater, and general municipal engineering projects. She has significant project experience with infrastructure evaluation, report preparation, project design, construction document preparation, permitting, and construction administration.

- Street and Utility Reconstruction Projects, Lebanon, NH
- Roadway and Utility Reconstruction, Somersworth, NH
- Street Reconstruction and Drainage, Dover, NH
- Culvert Replacement, Newmarket, NH
- Garrison Lane and Linden Street Bridges, Exeter, NH

Education

M.S., Civil Engineering, University of California – Berkeley

B.S., Civil Engineering, University of New Hampshire

Experience

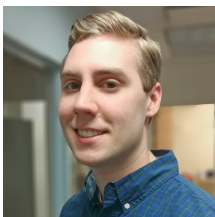
20 years

Joined Firm

2018

Professional Licenses

Professional engineer in NH, ME and **NHDOT LPA certified #1807**



Nate Edwards, PE

Environmental Inspector

Nate has experience on projects ranging from private developments to industrial facility expansions to municipal roadway designs. His skill set includes hydraulic and hydrological modeling, developing construction plans and specifications, construction observation and documentation, and completing third-party review of proposed developments. He is experienced in AutoCAD Civil 3D, HEC-RAS, Hydraflow Storm Sewers, HydroCAD, Storm and Sanitary Analysis, and Land Surveying.

- Street and Utility Reconstruction Projects, Lebanon, NH
- Roadway and Utility Reconstruction, Somersworth, NH
- Street Reconstruction and Drainage, Dover, NH
- Culvert Replacement, Newmarket, NH

Education

M.Eng., Civil Engineering, University of New Hampshire

B.S., Environmental Engineering, University of New Hampshire

Experience

6 years

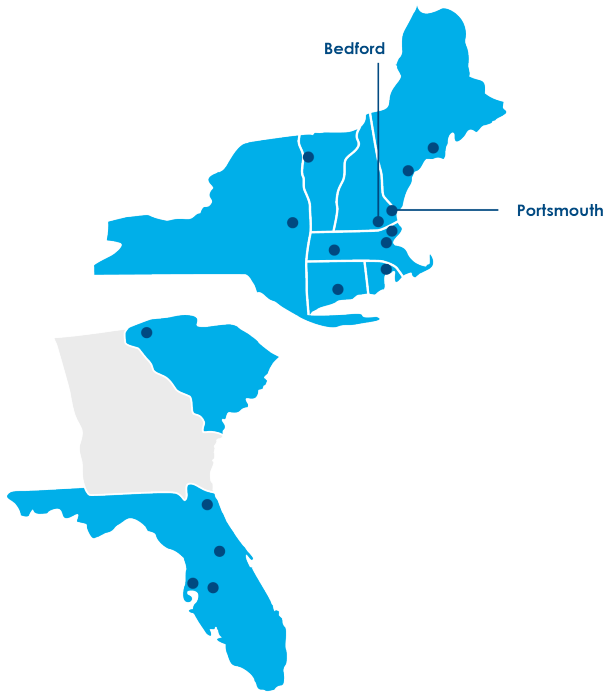
Joined Firm

2018

Professional License

Professional engineer in ME

B



- PSMJ Circle of Excellence
- ACEC Award-Winning Projects
- ENR Top 500 Design Firms
- ENR Top 200 Environmental Firms
- ENR Top 40 Sewer and Waste Engineering
- ENR Top 20 Wastewater Treatment Plants



“ Our mission – to enhance your success by delivering reliable solutions, responsive service, and superior value. ”

Wright-Pierce Overview

Wright-Pierce is an award-winning, multidiscipline engineering firm that has been providing civil infrastructure, drinking water, and wastewater services since 1947. Employee-owned and operated, our firm is made up of 300+ engineers and support professionals located in offices throughout the Northeast and Southeast. We complete many projects with construction values ranging from less than \$100,000 to more than \$100 million. We provide full-service engineering from initial planning to design, bidding, construction administration, and operational support.

An Award-Winning Firm

Wright-Pierce has been recognized by several industry organizations for business performance and engineering excellence. We rank in Engineering News-Record (ENR) “Top” lists, including the Top 500 Design Firms and Top 200 Environmental Design Firms in the country. Many of our projects receive regional ACEC Engineering Excellence Awards.

In addition, Wright-Pierce is a multi-year winner of the PSMJ Resources, Inc. ‘Circle of Excellence’ Award. PSMJ is a firm dedicated to business practices of architectural and engineering (A/E) firms worldwide and bestows its Circle of Excellence award after assessing benchmarks for operations, management, and sustainability.

Responsive Service Focused on Your Success

The cornerstone of our business is to help our clients improve their communities while protecting public health and the environment. For every project, we focus on the following:

- Understanding the project issues and goals
- Stressing practical, operator-friendly solutions
- Identifying fiscal constraints and emphasizing value-based solutions
- Involving and collaborating with our clients throughout the project

Construction Engineering & Inspection Services

The best design in the world is of little value if the design is not constructed properly. We understand the importance of competent construction administration services to encourage appropriately constructed projects and minimize public disruption during the construction process.

Wright-Pierce’s team members typically stay with a project from conception into design, through construction and startup/commissioning. This staffing model enhances consistency and our team members’ understanding of the client’s goals for the project through the design, construction, and commissioning phases. Our project managers, project engineers, and support staff perform the contract administration services during the construction phase. Additionally, we maintain a staff of resident project representatives (RPRs) to perform on-site observation of the construction process. Our RPRs oversee the work for compliance with design plans and specifications, monitor site safety, and keep field reports to document construction work. We have in-house quality control procedures for our field staff, and we bring our field staff together quarterly to review "lessons learned" and to continuously improve our design and construction management methods.

We know the importance of appropriate project documentation during construction, and we maintain a complete "paper trail". We encourage regular communications between all the stakeholders to anticipate and resolve issues. The following services are examples of typical duties performed by Wright-Pierce during the construction phase:

- Lead meetings
- Review progress schedules
- Review submittals
- Conduct on-site observations of the work in progress
- Report to the client any work that does not conform
- Oversee tests, equipment and systems startups, and O&M training
- Oversight of contract documents modifications
- Clarifications and interpretations of the contract documents
- Inspections
- Records maintenance
- Report generation
- Certificates and O&M manuals
- Review applications for payment



Similar Project Experience

The project examples below demonstrate our experience with aspects of construction engineering and inspection services specific to civil infrastructure projects. Additional projects will be provided upon request.



Scan or click this QR code to watch a video project story with the City and NHDES.

City of Lebanon, New Hampshire Street & Utility Reconstruction Projects

The City of Lebanon owns and operates a wastewater collection system that serves the areas of Lebanon and West Lebanon. The City is permitted to discharge flows in excess of collection system capacities through combined sewer overflows (CSOs) under their NPDES permit. The City is also under the requirements of an EPA Consent Decree issued in 2009. Throughout the past two decades, the City has worked with Wright-Pierce and the NHDES to resolve inflow/infiltration (I/I) and CSO issues and make the surrounding waterways cleaner and safer. The CSO program consists of 13 separate contracts totaling over \$60M in construction costs. The scope and scale of the project includes ~14.5 miles of roadway improvements, ~18 miles of sidewalks, ~12.5 miles of sewer infrastructure, ~13.5 miles of stormwater infrastructure, and ~12.6 miles of water infrastructure and has removed an estimated 250 catch basins from the collection system.

Highlights

- Final planning, design, and construction management
- Neighborhood revitalization
- Street base and pavements
- Curbing and sidewalks
- Storm drainage
- Retaining walls
- Sewers and water mains
- Signage and pavement markings

Dates

2000 – 2022

Related Team Members

Ryan Wingard, Jason Gallant, Britt Eckstrom, Nate Edwards, Jake Shactman, Charlie Daigle

City of Somersworth, New Hampshire Roadway & Utility Reconstruction



Revitalization of historic downtown area and addressing aging water, sewer, and stormwater infrastructure.

Wright-Pierce was retained to provide design, permitting, bidding, and construction administration and inspection services for roadway/utility improvements on Cemetery Road (3,350 linear feet), Constitutional Way (630 linear feet), and a portion of Main Street (3,750 linear feet). The primary goals are to revitalize and improve the historic downtown area of Somersworth, and address the City's aging water, sewer, and stormwater infrastructure. Project work includes survey; geotechnical explorations and analysis; ~7,730 LF of full-depth roadway reconstruction; ~7,750 LF of new sidewalk and curbing; replacement of ~6,525 LF of sanitary sewer infrastructure; replacement of ~7,730 LF of water infrastructure; improvements to stormwater infrastructure and bike/pedestrian facilities in accordance with ADA; traffic calming and complete street considerations; and public meeting facilitation.

Highlights

- Roadway reconstruction
- Utility improvements
- Stormwater system upgrades
- LID design
- Permitting
- Bike/ped facilities
- ADA compliance
- Traffic calming

Dates

2018 – 2024 (estimated)

Related Team Members

Ryan Wingard, Jason Gallant, Britt Eckstrom, Nate Edwards, Jake Shactman

City of Rochester, New Hampshire
Route 202A Water Main Extension



On-site coordination with the City, NHDOT, and NHDES.

Residents along State Route 202A in the City of Rochester have poor water quality due to iron, manganese, and MtBE contamination. This project will install approximately 20,000 feet of new main and a composite elevated water storage tank to supply City drinking water to residents in the area. Wright-Pierce is providing engineering design and construction oversight services for this project. With Wright-Pierce’s assistance, the City was able to obtain over \$8.7 million in grants and over \$1.2 million in low interest loans from NH DWG Trust Fund and NHDES MTBE Fund for the project. Considerable coordination was required between all funding agencies, NHDOT, the NHDES Wetlands Bureau, private landowners, and the surrounding community.

Highlights

- Water main extension
- Roadway reconstruction
- Construction oversight services
- Elevated stream crossing
- Private property and NHDOT coordination
- Over 42% grant funded

Dates

2019 – 2024 (estimated)

Related Team Members

Ryan Wingard, Britt Eckstrom, Jake Shactman

City of Dover, New Hampshire
Street Reconstruction & Drainage Improvements



This project will further the City’s efforts to provide reliable utilities and safe neighborhood sidewalks and streets.

Wright-Pierce has completed over 20 projects with the City, dating back to 2010. The Belknap Street and Elm Street reconstruction included the replacement of 4,200 LF of cast-iron water main, 3,000 LF of storm drain, stormwater treatment infrastructure, new sidewalks, and 4,500 LF of full roadway reconstruction. The Stark Avenue and downtown sewer rehabilitation was a three-phase project that included the replacement/rehabilitation of 7,900 LF of sewer, trenchless installation, new manholes, stormwater drainage extensions, catch basin, access road improvements, and slope stability upgrades. Wright-Pierce assisted with SRF funding for this project. The Court Street and Union Street reconstruction included utility design for a new water main, storm drain system, and sewer system. The street/sidewalk portion included designing for road widths based on traffic volume and multimodal use, as well as intersection improvements. The installation of a new pedestrian bridge was designed as a cost-effective solution for extending a pipeline across the river to convey leachate flows from the local landfill. The bridge was constructed of weathering steel with a wooden deck and has a span of 140 feet and provides recreational benefits to the community.

Highlights

- 4,200 feet of cast-iron water main
- 3,000 feet of storm drain
- stormwater treatment infrastructure
- 4,500 feet of roadway reconstruction
- Sidewalk replacement
- Street base and pavements
- Traffic calming
- Trenchless pipe rehabilitation and installation

Dates

2012 – Ongoing

Related Team Members

Jason Gallant, Ryan Wingard, Britt Eckstrom, Nate Edwards, Jake Shactman

Town of York, Maine

Mount Agamenticus Parking Lot Improvements



Wright-Pierce assisted in the design, permitting, and bidding for improvements to the Mount Agamenticus parking lot and restrooms.

The Town of York retained Wright-Pierce to design improvements for new parking facilities that reduce congestion, improve traffic flow, and increase parking capacity all the while minimizing the impact on the environment and enhancing accessibility to other site amenities. The impact on stormwater runoff from the impervious pavement shall be offset by grading the parking lot so water sheet flows into the bioretention basins and vegetated soil filter areas. With conservation efforts in mind, the plant restoration species are site specific to reflect the native plant community on the mountain. This green infrastructure practice allows the stormwater runoff from the parking areas to permeate back into the ground water, improve stormwater quality, and protect the Chase Pond Watershed. Finalized layout and stormwater management design plans have been approved for construction. Regulatory effort associated with this project included Maine Department of Environmental Protection (Stormwater Management Permit) and Town of York (Site Plan Development Permit). Wright-Pierce prepared permit applications and submit on behalf of the Town of York and the York Water District.

Highlights

- Reduce congestion
- Improve traffic flow
- Increase parking capacity
- Minimizing environmental impact
- Water quality best management practices (BMP) implemented
- Assisted in permitting
- Assisted in bidding
- MaineDEP permitting

Dates

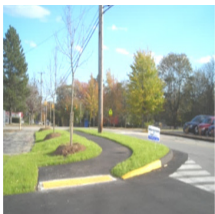
2019 – Ongoing

Related Team Members

Jason Gallant, Ryan Wingard, Nate Edwards, Jake Shactman

Old Orchard Beach, Maine

Roadway & Sidewalk Improvement Projects



Wright-Pierce has worked on numerous roadway and sidewalk projects throughout Town, including tourism-focused areas with high pedestrian traffic.

Wright-Pierce has designed several roadway and sidewalk projects in Old Orchard Beach over the years. The main driver for roadway and sidewalk improvements was a lack of sidewalks or dated infrastructure. Communities identified these issues as major safety concerns. All designs fit harmoniously into existing neighborhoods or public areas considering driveway openings, connectivity to existing intersections, and stormwater management. For all projects, Wright-Pierce participated in public meetings. In many cases, the roadway reconstruction projects also included upgrades to subsurface utilities. Given narrow right-of-way widths, close proximity of homes to the existing travel ways, and need for on-street parking, preliminary planning included review and collaboration on designs that would provide safe travel lane widths for residents and emergency vehicles resulting in modifications to one-way travel.

Highlights

- Residential, commercial, and busy beachfront areas
- Adjacent to coast area with increased tourism and pedestrian traffic
- Comprehensive sidewalk improvements
- Comprehensive roadway upgrades
- ADA compliance
- Designed using MaineDOT specifications
- MaineDOT LPA projects

Dates

2006 – ongoing

Related Team Members

Ryan Wingard, Jaime Wallace, Nate Edwards, Jason Gallant, Miranda Pierre



230 Commerce Way, Suite 302
Portsmouth, NH 03801
603.430.3728 | www.wright-pierce.com

jason.gallant@wright-pierce.com