

NEW HAMPSHIRE DEPARTMENT OF TRANSPORTATION

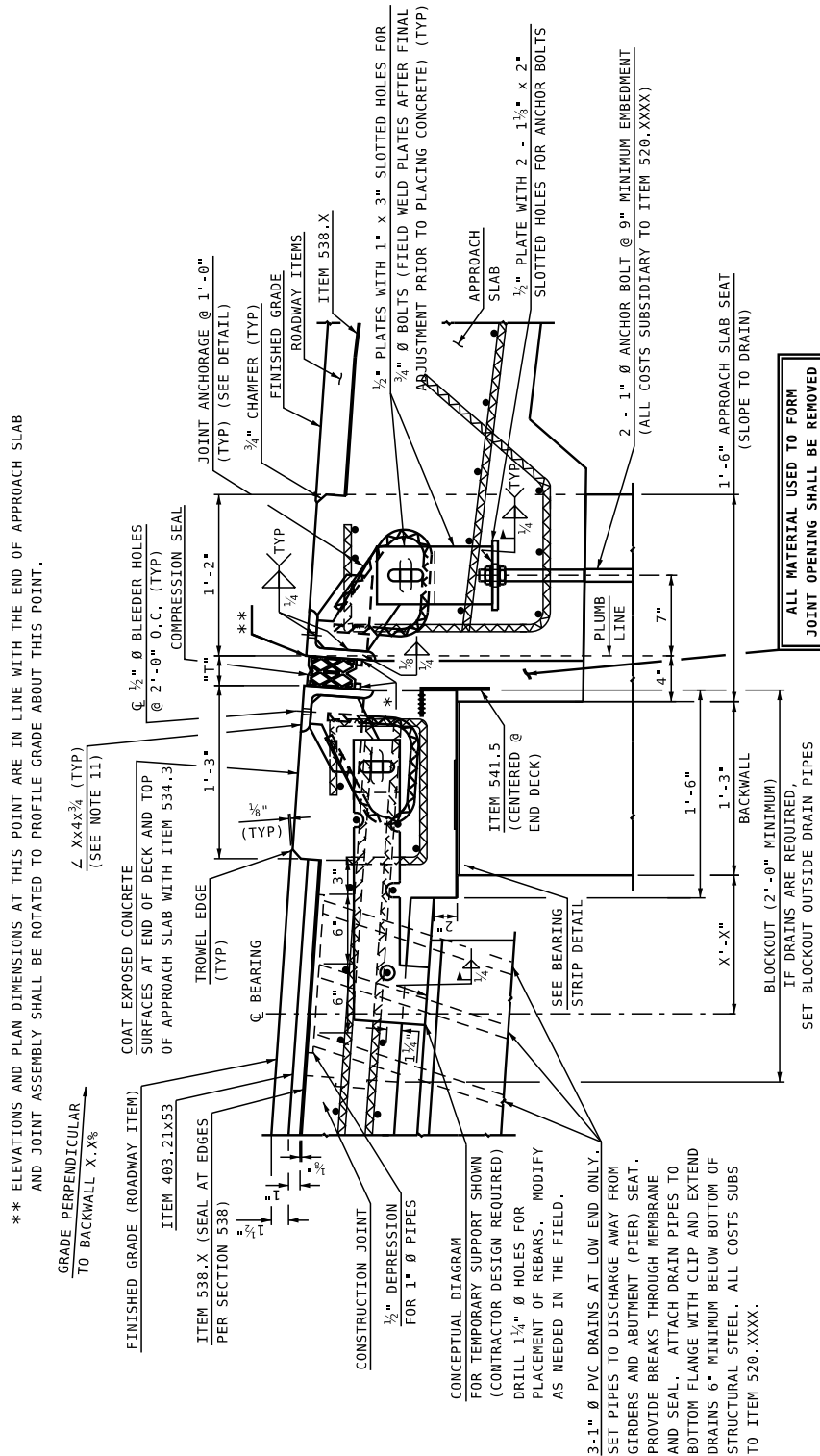


BUREAU OF BRIDGE DESIGN



DESCRIPTION: EXPANSION JOINT WITH PROFILE PERPENDICULAR TO BACKWALL - COMPRESSION SEAL - NEW CONSTR. CIP

DATE REVISED:
7/31/2023



SECTION A-A

NOT TO SCALE

* 1/2" x 1/2" STOP BARS SHALL BE PLACED X" FROM TOP OF THE ANGLES TO TOP OF BARS

MODIFY TO FIT PROJECT

NEW HAMPSHIRE DEPARTMENT OF TRANSPORTATION

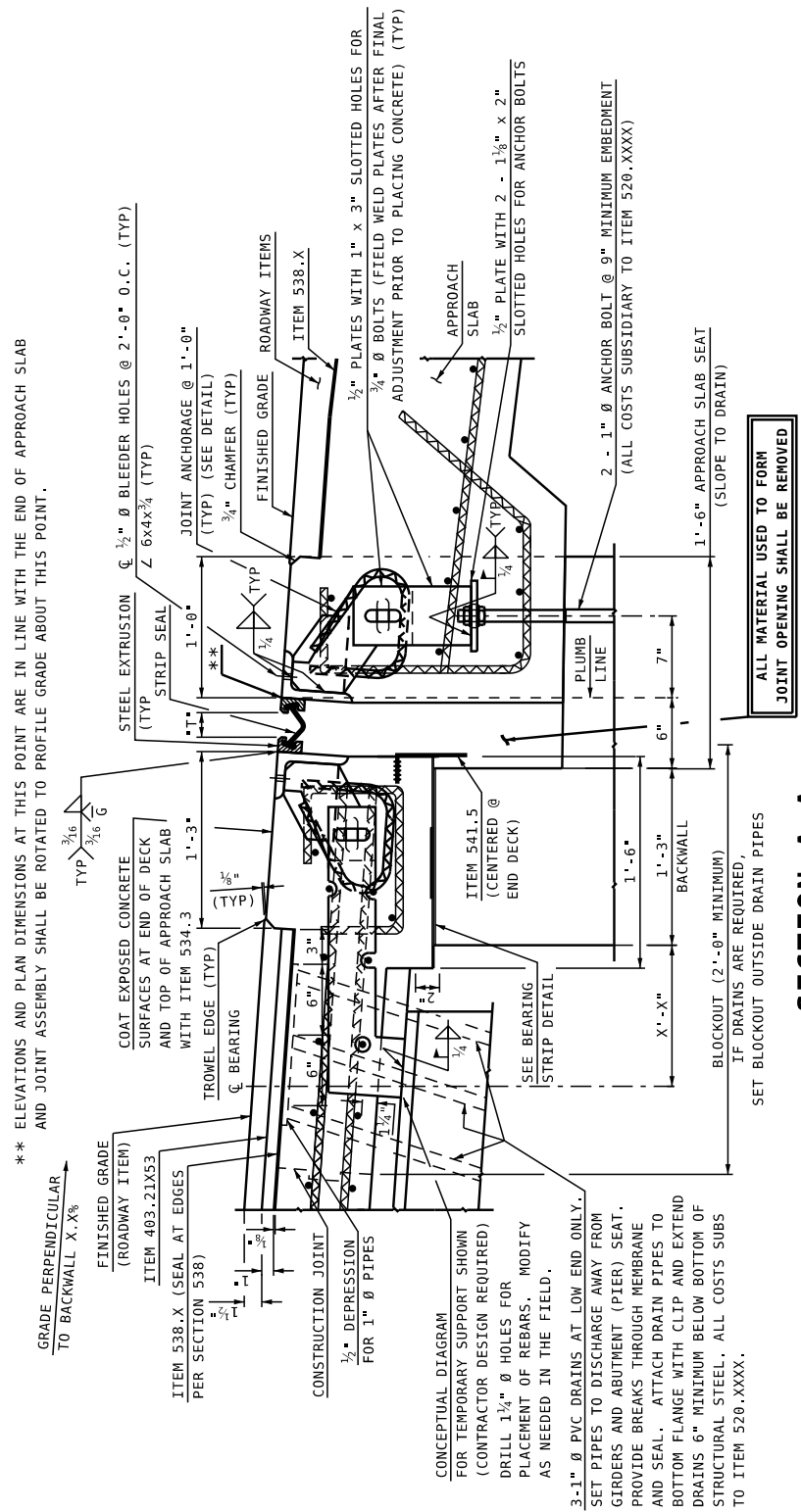


BUREAU OF BRIDGE DESIGN



DESCRIPTION: EXPANSION JOINT WITH PROFILE PERPENDICULAR TO BACKWALL - STRIP SEAL - NEW CONSTR. CIP

DATE REVISED: 7/31/2023



MODIFY TO FIT PROJECT

SECTION A-A

NOT TO SCALE

** ELEVATIONS AND PLAN DIMENSIONS AT THIS POINT ARE IN LINE WITH THE END OF APPROACH SLAB AND JOINT ASSEMBLY SHALL BE ROTATED TO PROFILE GRADE ABOUT THIS POINT.

GRADE PERPENDICULAR TO BACKWALL X-X'S

FINISHED GRADE (ROADWAY ITEM) ITEM 403.21X53

COAT EXPOSED CONCRETE SURFACES AT END OF DECK AND TOP OF APPROACH SLAB WITH ITEM 534.3

TROWEL EDGE (TYP) 1'-3"

CONSTRUCTION JOINT 1/2" DEPRESSION FOR 1" Ø PIPES

CONCEPTUAL DIAGRAM FOR TEMPORARY SUPPORT SHOWN (CONTRACTOR DESIGN REQUIRED) DRILL 1 1/2" Ø HOLES FOR PLACEMENT OF REBARS. MODIFY AS NEEDED IN THE FIELD.

3-1" Ø PVC DRAINS AT LOW END ONLY. SET PIPES TO DISCHARGE AWAY FROM GIRDERS AND ABUTMENT (PIER) SEAT. PROVIDE BREAKS THROUGH MEMBRANE AND SEAL. ATTACH DRAIN PIPES TO BOTTOM FLANGE WITH CLIP AND EXTEND DRAINS 6" MINIMUM BELOW BOTTOM OF STRUCTURAL STEEL. ALL COSTS SUBS TO ITEM 520.XXXX.

ITEM 541.5 (CENTERED @ END DECK)

BACKWALL 1'-3"

1'-6"

1'-6" APPROACH SLAB SEAT (SLOPE TO DRAIN)

IF DRAINS ARE REQUIRED, SET BLOCKOUT OUTSIDE DRAIN PIPES

2 - 1" Ø ANCHOR BOLT @ 9" MINIMUM EMBEDMENT (ALL COSTS SUBSIDIARY TO ITEM 520.XXXX)

1/2" PLATE WITH 2 - 1 1/8" x 2" SLOTTED HOLES FOR ANCHOR BOLTS

APPROACH SLAB

FINISHED GRADE ROADWAY ITEMS

ITEM 538.X

1/2" PLATES WITH 1" x 3" SLOTTED HOLES FOR 3/4" Ø BOLTS (FIELD WELD PLATES AFTER FINAL ADJUSTMENT PRIOR TO PLACING CONCRETE) (TYP)

3/4" CHAMFER (TYP)

JOINT ANCHORAGE @ 1'-0"

STEEL EXTRUSION WITH STRIP SEAL

1'-0"

1/2" Ø BLEEDER HOLES @ 2'-0" O.C. (TYP)

6x4x3/4

3/16"

3/16"

6"

7"

1"

1'-6"

1'-3"

X'-X"

PLUMB LINE

1/4"

1/4"

1/4"

1/4"

1/4"

1/4"

1/4"

1/4"

1/4"

1/4"

1/4"

1/4"

1/4"

1/4"

1/4"

1/4"

1/4"

1/4"

1/4"

1/4"

1/4"

1/4"

1/4"

1/4"

1/4"

1/4"

1/4"

1/4"

1/4"

1/4"

1/4"

1/4"

1/4"

1/4"

1/4"

1/4"

1/4"

1/4"

1/4"

1/4"

1/4"

1/4"

1/4"

1/4"

1/4"

1/4"

1/4"

1/4"

1/4"

1/4"

1/4"

1/4"

1/4"

1/4"

1/4"

1/4"

1/4"

1/4"

1/4"

1/4"

1/4"

1/4"

1/4"

1/4"

1/4"

1/4"

1/4"

1/4"

1/4"

1/4"

1/4"

1/4"

1/4"

1/4"

1/4"

1/4"

1/4"

1/4"

1/4"

1/4"

1/4"

1/4"

1/4"

1/4"

1/4"

1/4"

1/4"

1/4"

1/4"

1/4"

1/4"

1/4"

1/4"

1/4"

1/4"

1/4"

1/4"

1/4"

1/4"

1/4"

1/4"

1/4"

1/4"

1/4"

1/4"

1/4"

1/4"

1/4"

1/4"

1/4"

1/4"

1/4"

1/4"

1/4"

1/4"

1/4"

1/4"

1/4"

1/4"

1/4"

1/4"

1/4"

1/4"

1/4"

1/4"

1/4"

1/4"

1/4"

1/4"

1/4"

1/4"

1/4"

1/4"

1/4"

1/4"

1/4"

1/4"

1/4"

1/4"

1/4"

1/4"

1/4"

1/4"

1/4"

1/4"

1/4"

1/4"

1/4"

1/4"

1/4"

1/4"

1/4"

1/4"

1/4"

1/4"

1/4"

1/4"

1/4"

1/4"

1/4"

1/4"

1/4"

1/4"

1/4"

1/4"

1/4"

1/4"

1/4"

1/4"

1/4"

1/4"

1/4"

1/4"

1/4"

1/4"

1/4"

1/4"

1/4"

1/4"

1/4"

1/4"

1/4"

1/4"

1/4"

1/4"

1/4"

1/4"

1/4"

1/4"

1/4"

1/4"

1/4"

1/4"

1/4"

1/4"

1/4"

1/4"

1/4"

1/4"

1/4"

1/4"

1/4"

1/4"

1/4"

1/4"

1/4"

1/4"

1/4"

1/4"

1/4"

1/4"

1/4"

1/4"

1/4"

1/4"

1/4"

1/4"

1/4"

1/4"

1/4"

1/4"

1/4"

1/4"

1/4"

1/4"

1/4"

1/4"

1/4"

1/4"

1/4"

1/4"

1/4"

1/4"

1/4"

1/4"